



SELFBRIEFING

**19th FAI
EUROPEAN
GLIDING CHAMPIONSHIPS**
Club, Standard & 20M Multi-Seat

General

Self briefing for the **19th FAI European Gliding Championships – EGC2017** is an attachment of Local procedures of EGC2017.

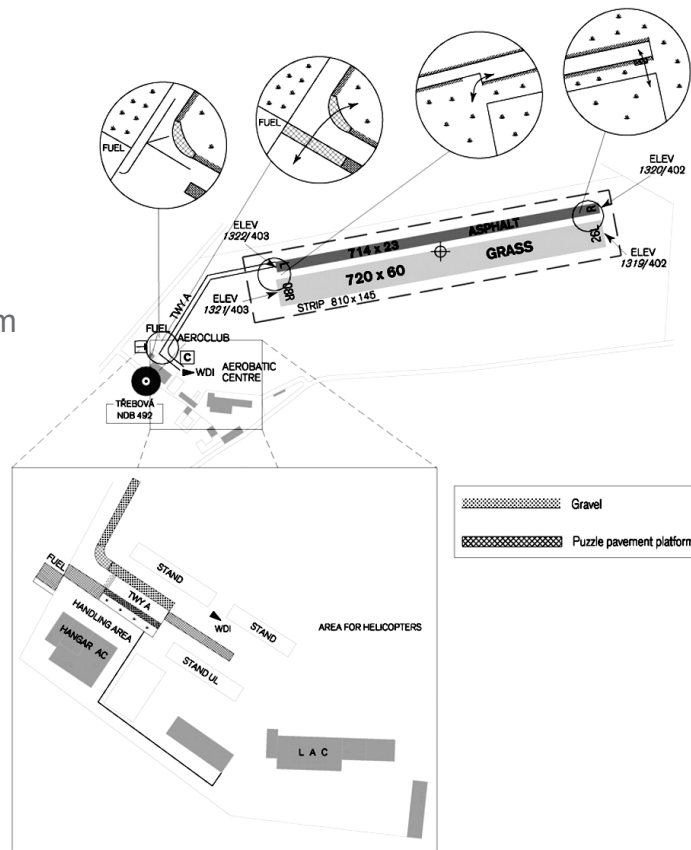
Contents

3	Airfield characteristics
4	Legend
5	Arrivals
6	Gliders and trailers parking places
7	Registration, scrutineering
8	Weighing, water filling
9	Landing areas
11	Launching procedure
17	Arrival, landing
19	Finish ring
20	Dangerous landing zones
21	Altitude limit, airspace structure
22	CTR, TMA Caslav

AIRFIELD CHARACTERISTICS

ICAO code: LKMK
Latitude: 49°47'54" N
Longitude: 16°41'16" E
Elevation (ELEV): 403 m / 1322 ft
Runway (RWY): 08R / 26L, grass 720 × 60 m
08L / 26R, asphalt 714 × 23 m

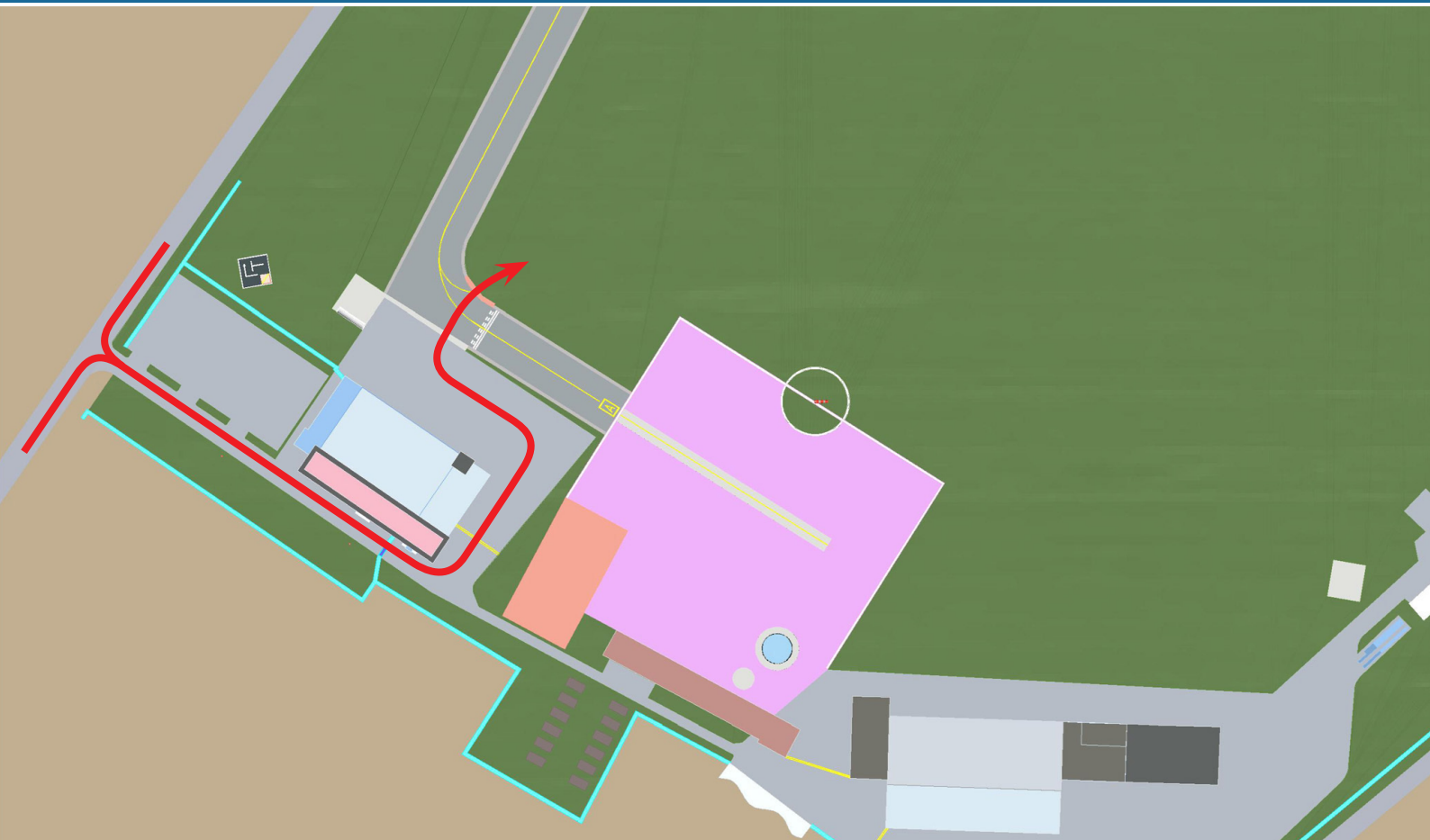
Radio frequency:
TREBOVA GROUND 126,700 MHz
TREBOVA START 128,300 MHz
TREBOVA RADIO 130,550 MHz



LEGEND



ARRIVALS – Cars, trailers (standard dimensions)



GLIDERS AND TRAILERS PARKING PLACES



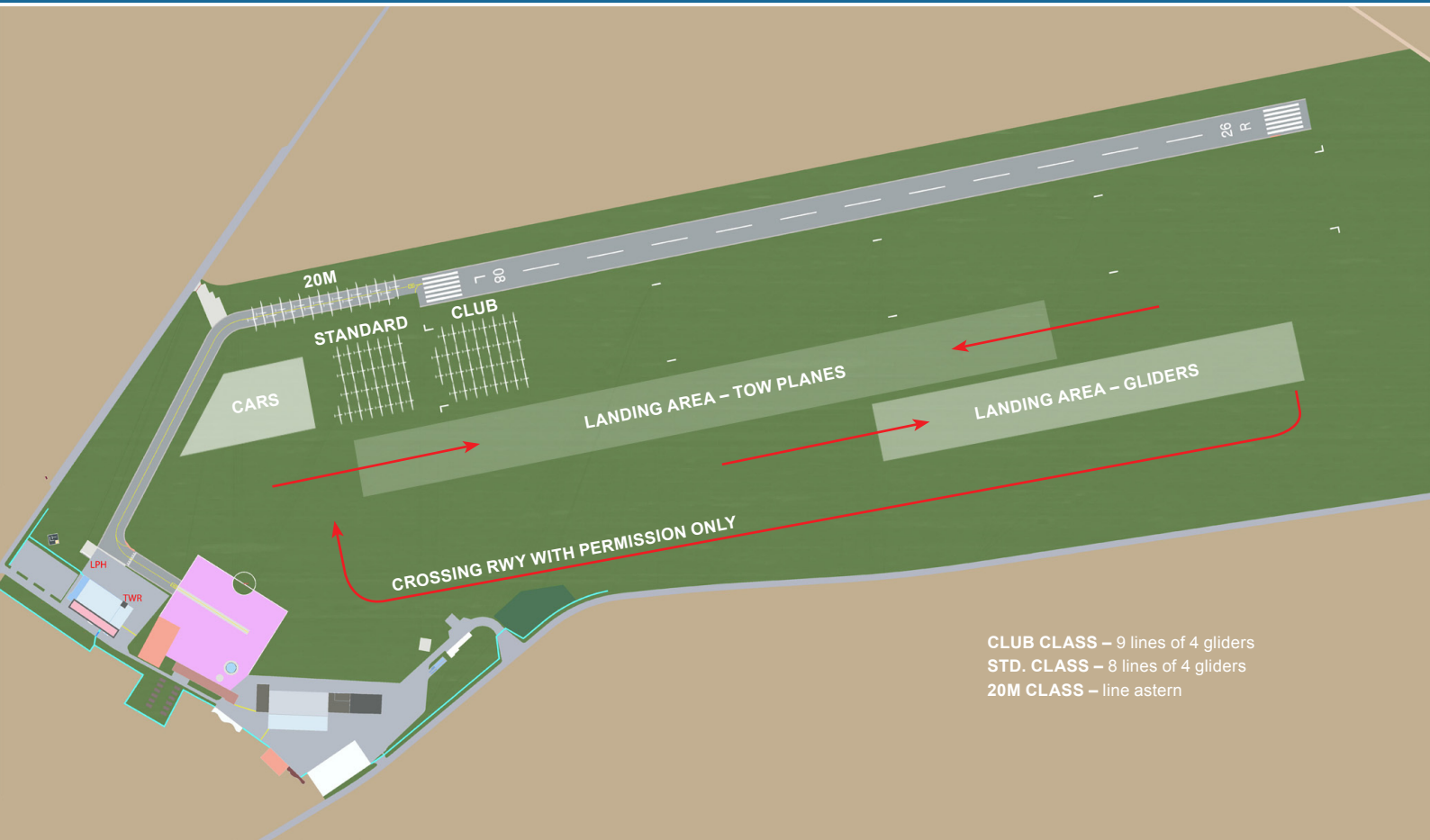
REGISTRATION, SCRUTINEERING



WEIGHING, WATER FILLING

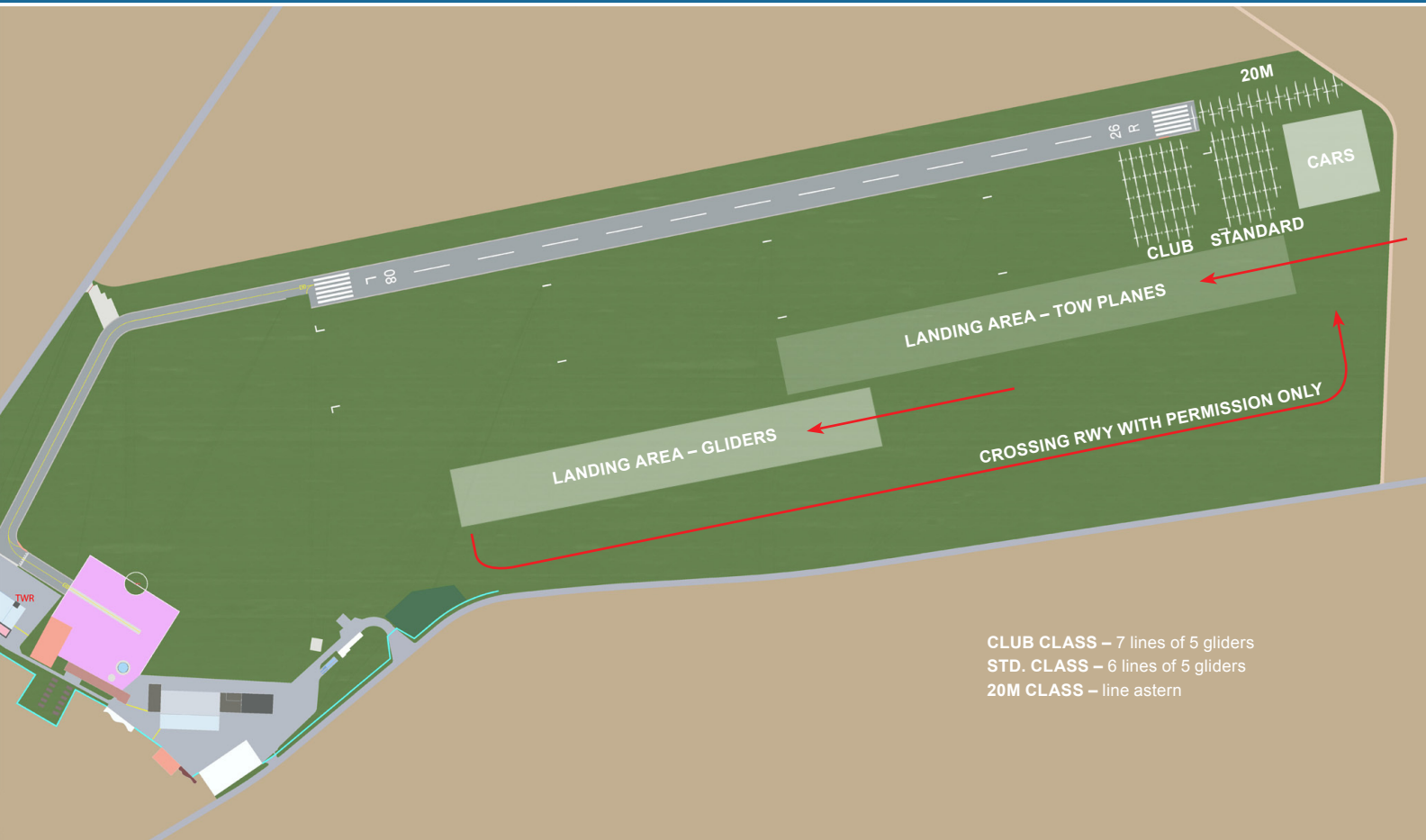


GRID 08 – LANDING AREAS

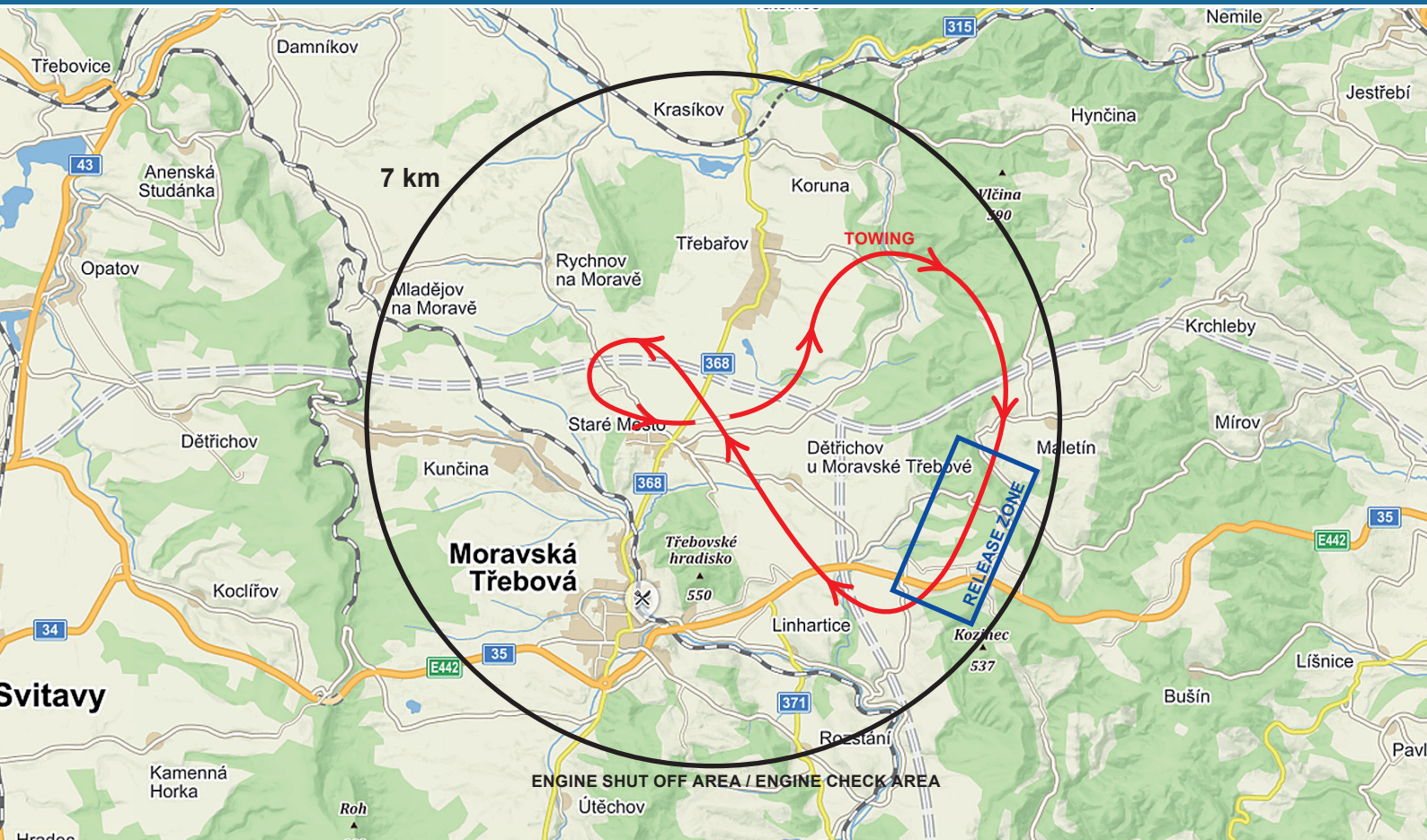


CLUB CLASS – 9 lines of 4 gliders
STD. CLASS – 8 lines of 4 gliders
20M CLASS – line astern

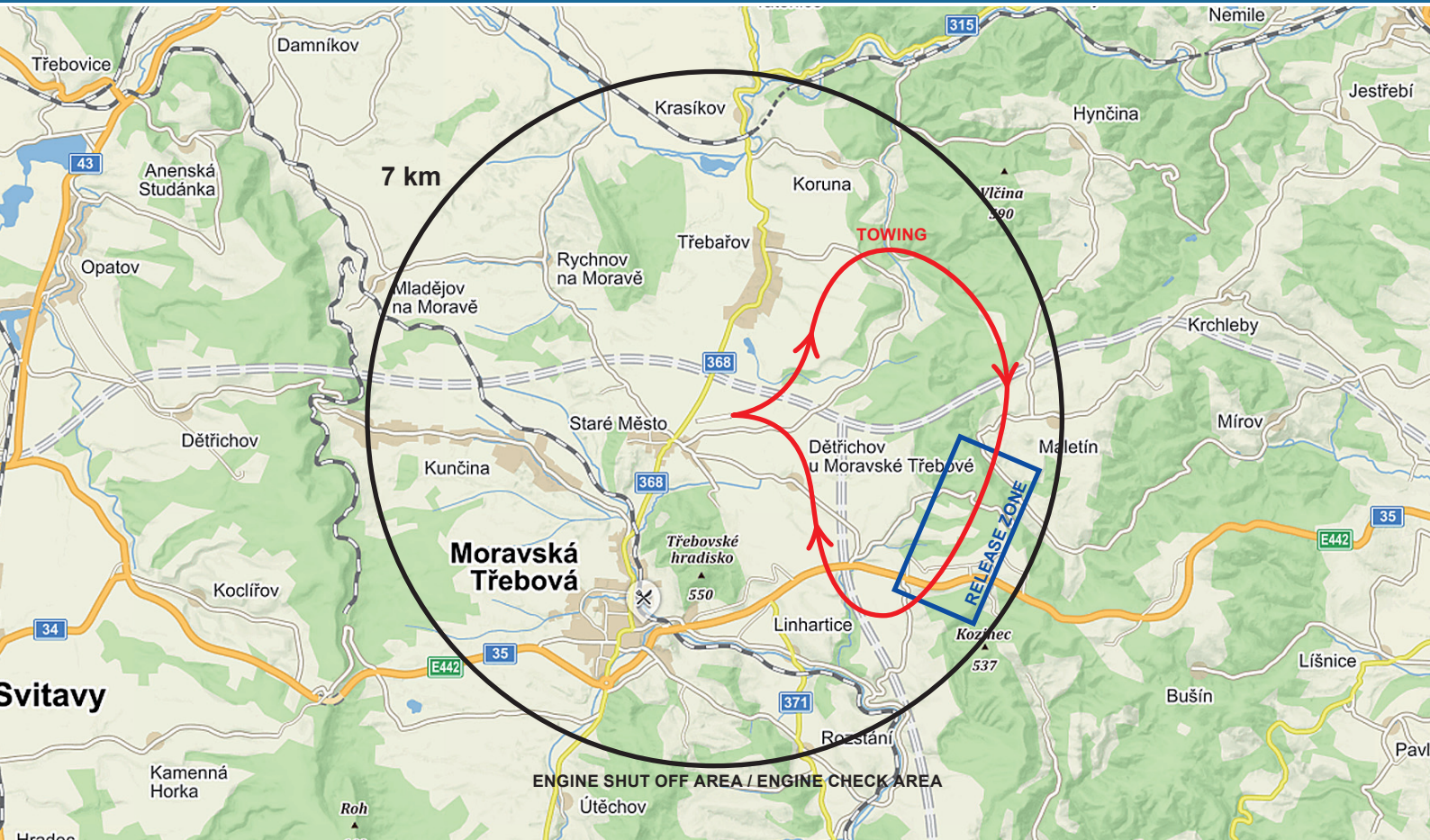
GRID 26 – LANDING AREAS



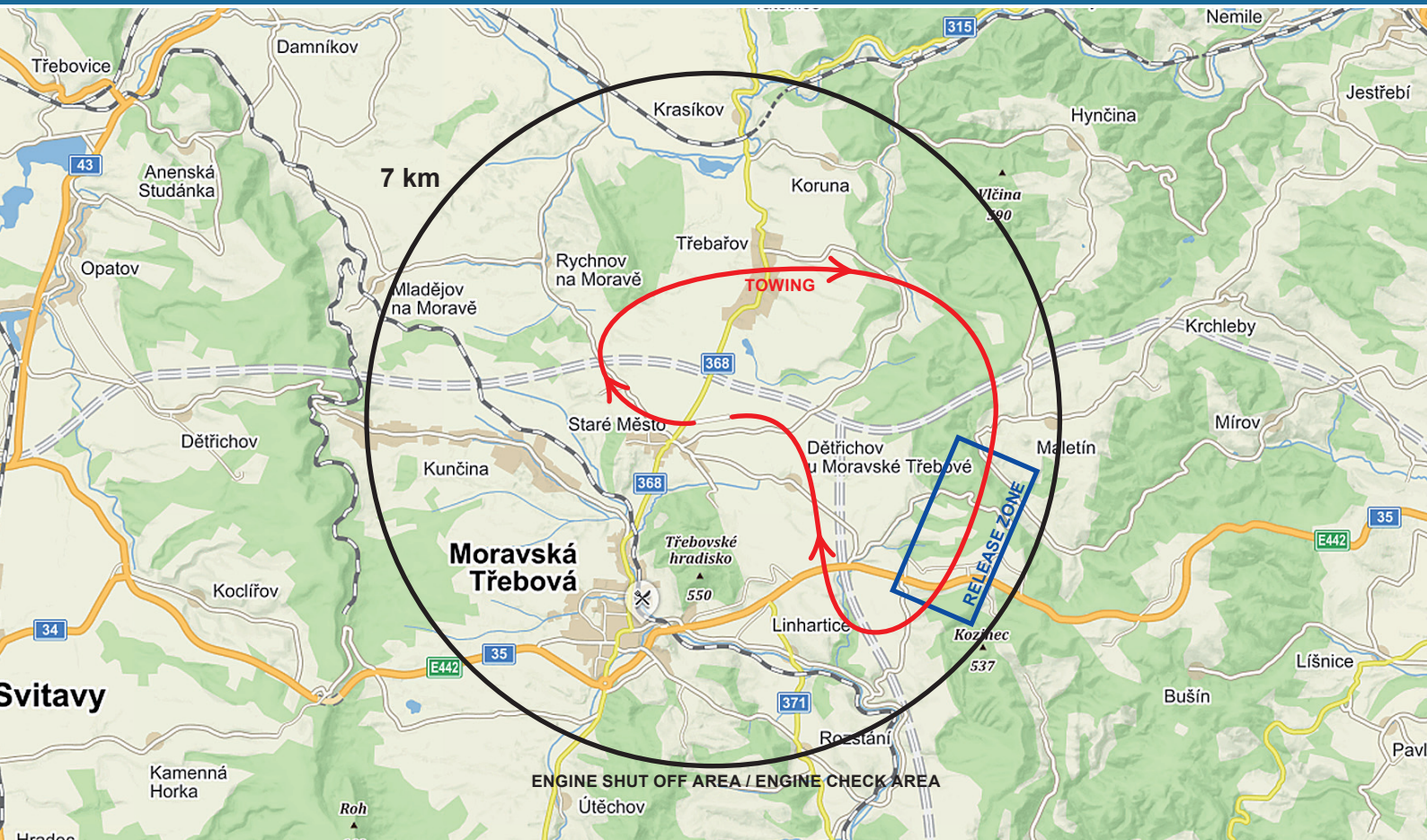
LAUNCHING PROCEDURE – CLUB CLASS – RWY08; TOW PLANES LANDING – RWY08



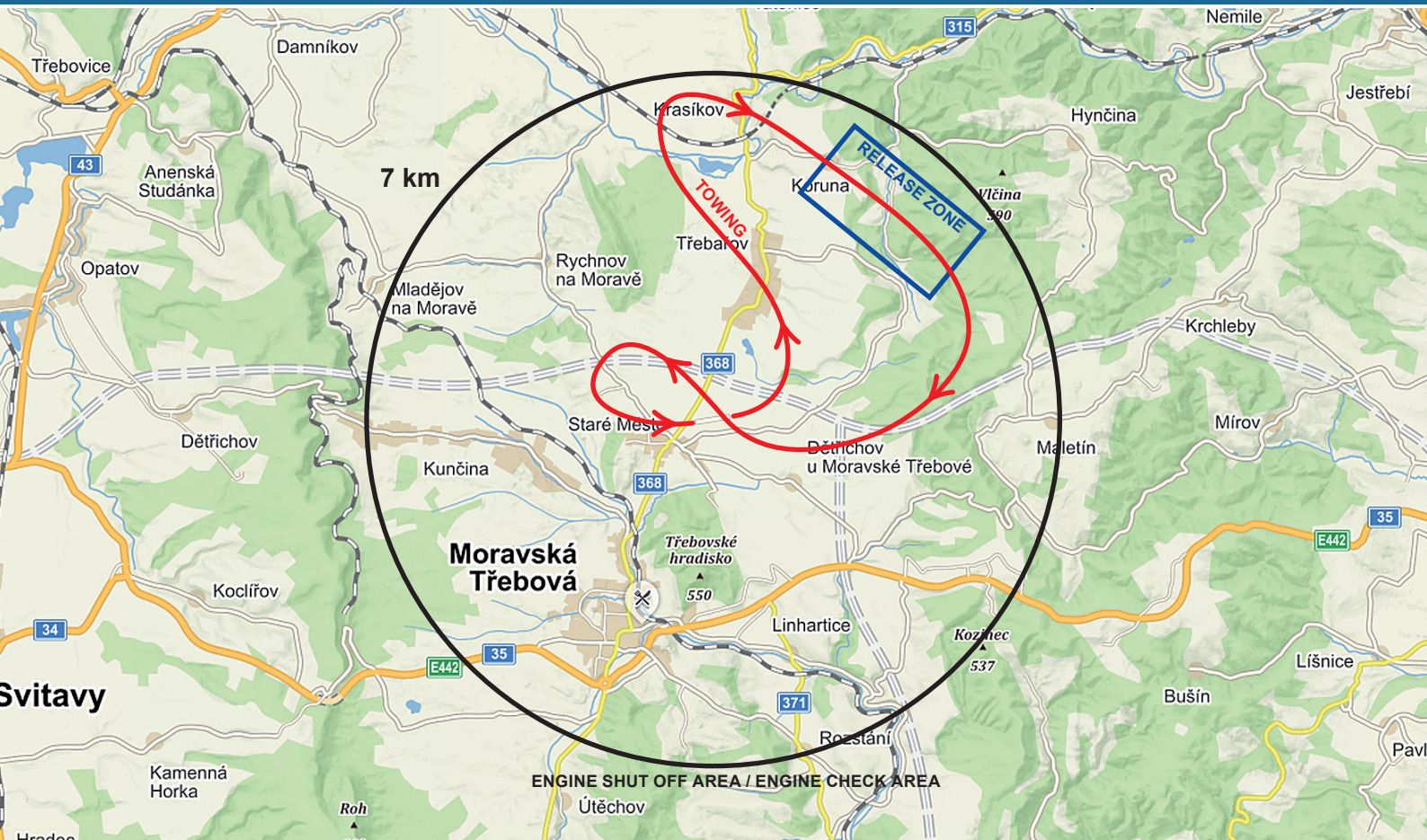
LAUNCHING PROCEDURE – CLUB CLASS – RWY08; TOW PLANES LANDING – RWY26



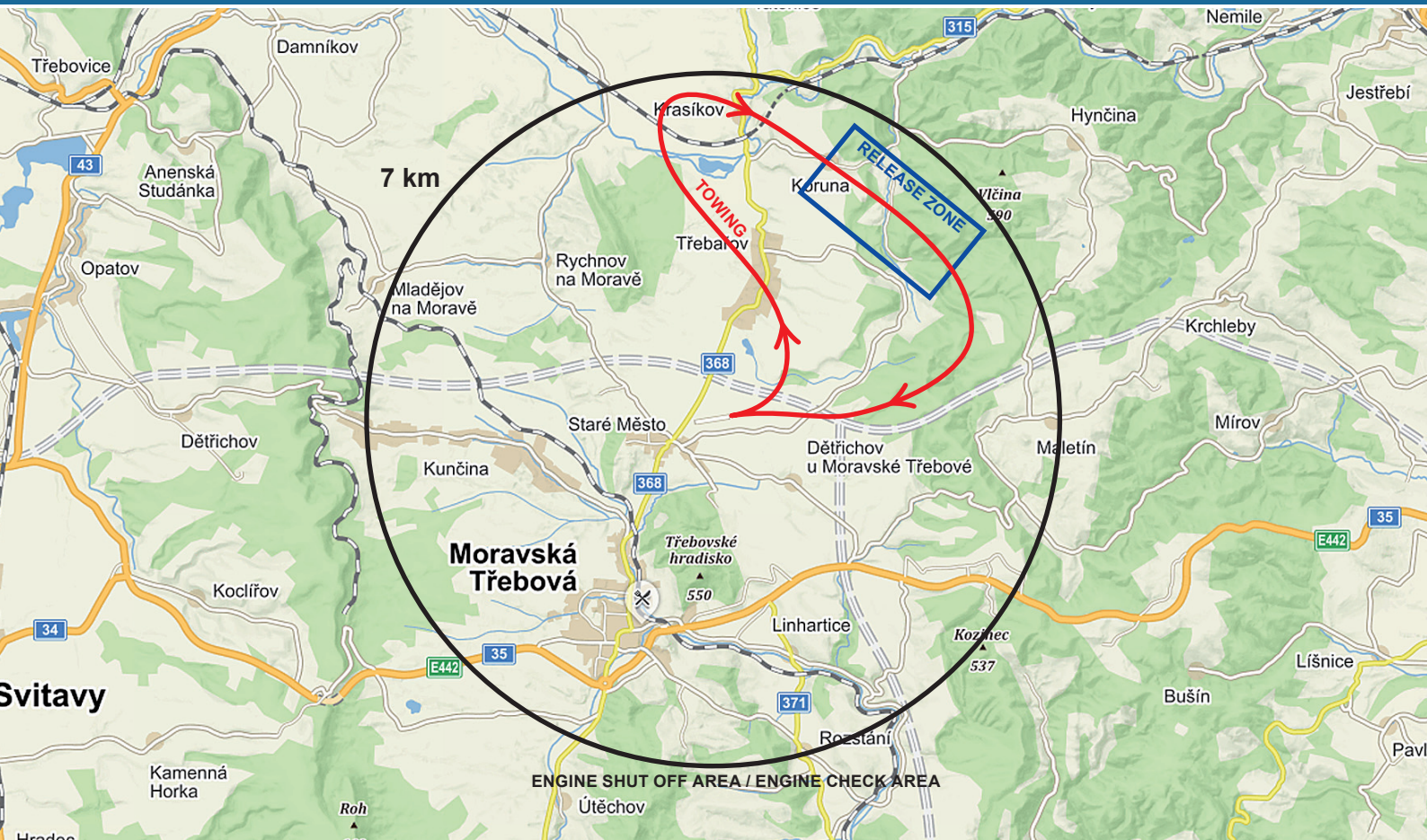
LAUNCHING PROCEDURE – CLUB CLASS – RWY26; TOW PLANES LANDING – RWY26



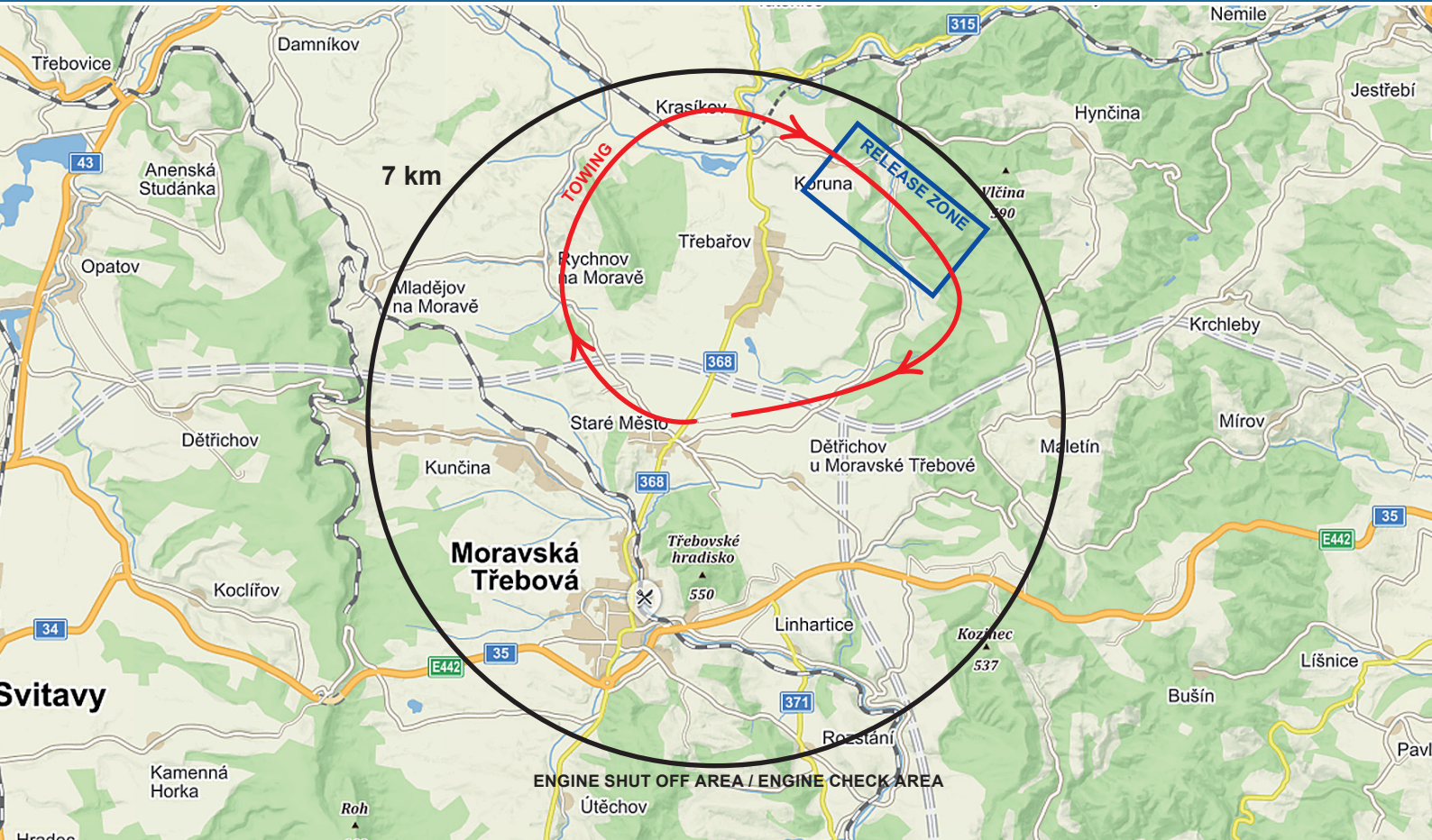
LAUNCHING PROCEDURE – STD, 20M CLASSES – RWY08; TOW PLANES LANDING – RWY08



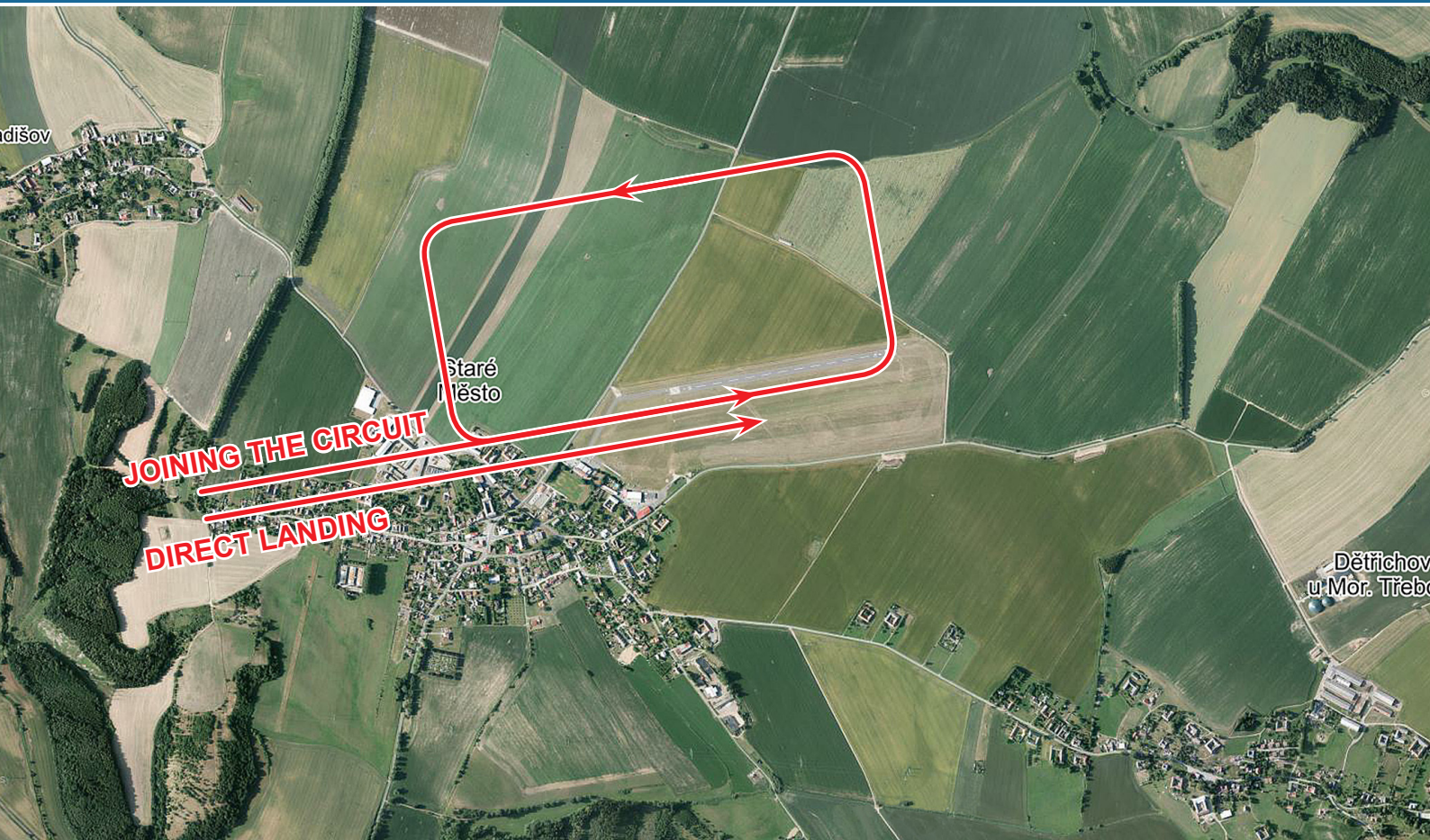
LAUNCHING PROCEDURE – STD, 20M CLASSES – RWY08; TOW PLANES LANDING – RWY26



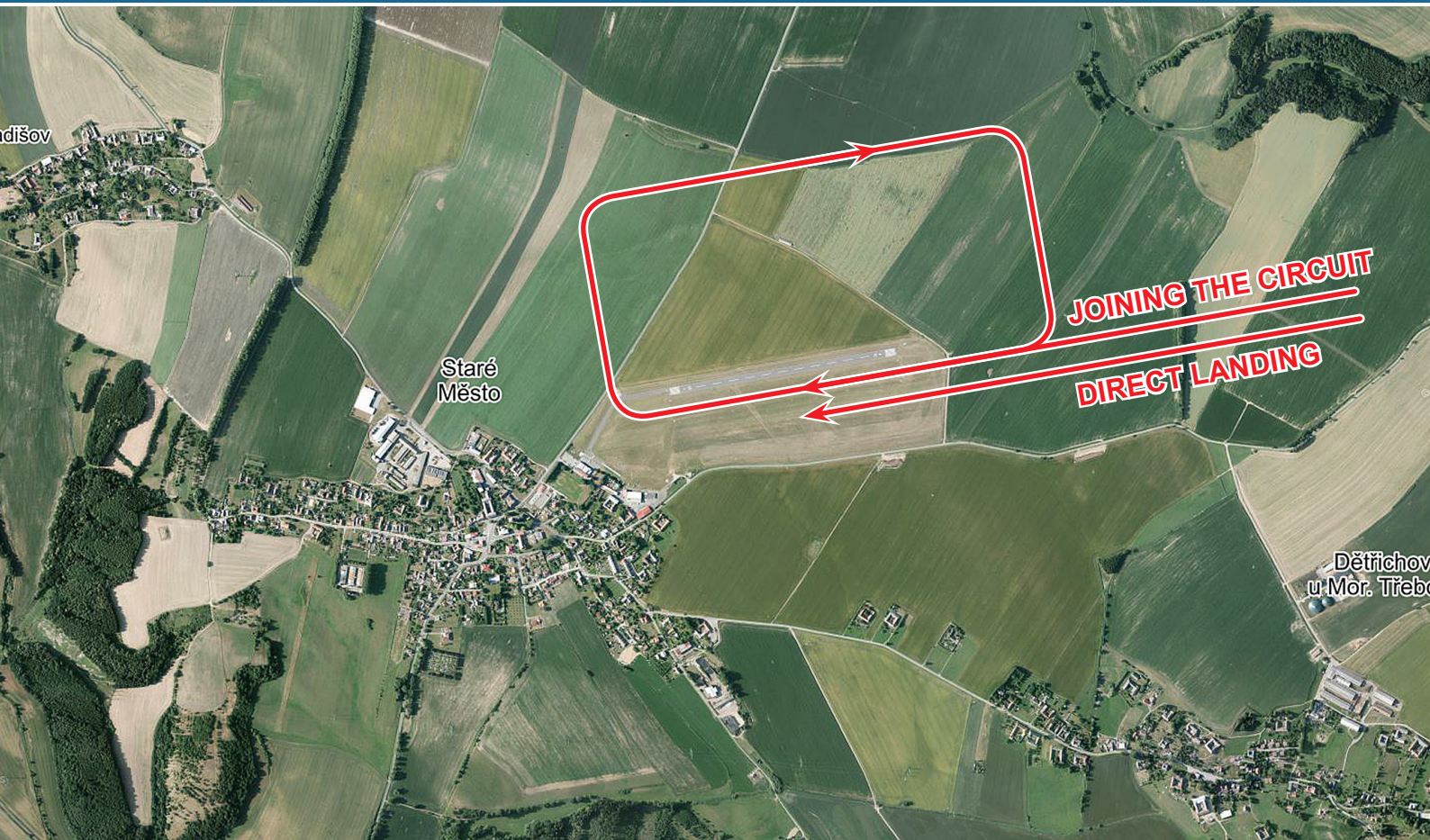
A map of the Moravská Třebová region. A large black circle is centered on the town of Moravská Třebová, with a radius of 7 km. A red line with arrows indicates a clockwise path starting from the town, passing through Rychnov na Moravě, Krasíkov, and Koruna, and returning to the town. A blue rectangle labeled 'RELEASE ZONE' is located in the northeast, near Koruna and Hynčina. The map shows various roads, including E442, E35, and E315, and several towns and villages such as Třebovice, Anenská Studánka, Opatov, Dětřichov, Kunčina, Koclířov, Kamenná Horka, Útěchov, Rožstání, Linhartice, Třebavské hradisko, Staré Město, Třebáň, Mladějov na Moravě, Krasíkov, Koruna, Hynčina, Nemile, Jestřebí, Krchleby, Mírov, Maletín, Lišnice, Bušín, and Pavlov. The text 'ENGINE SHUT OFF AREA / ENGINE CHECK AREA' is written at the bottom of the map.



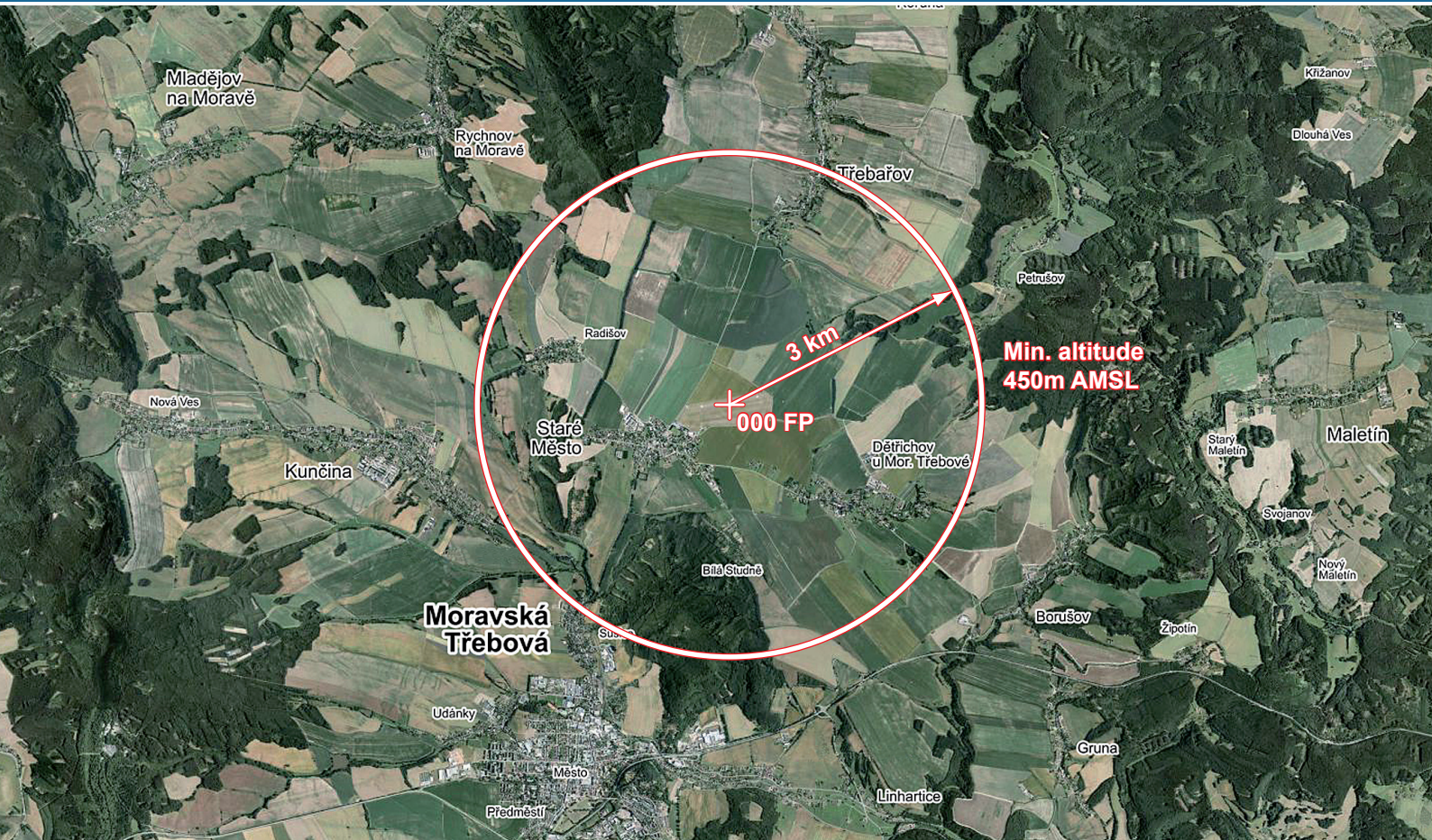
ARRIVAL, LANDING – RWY08



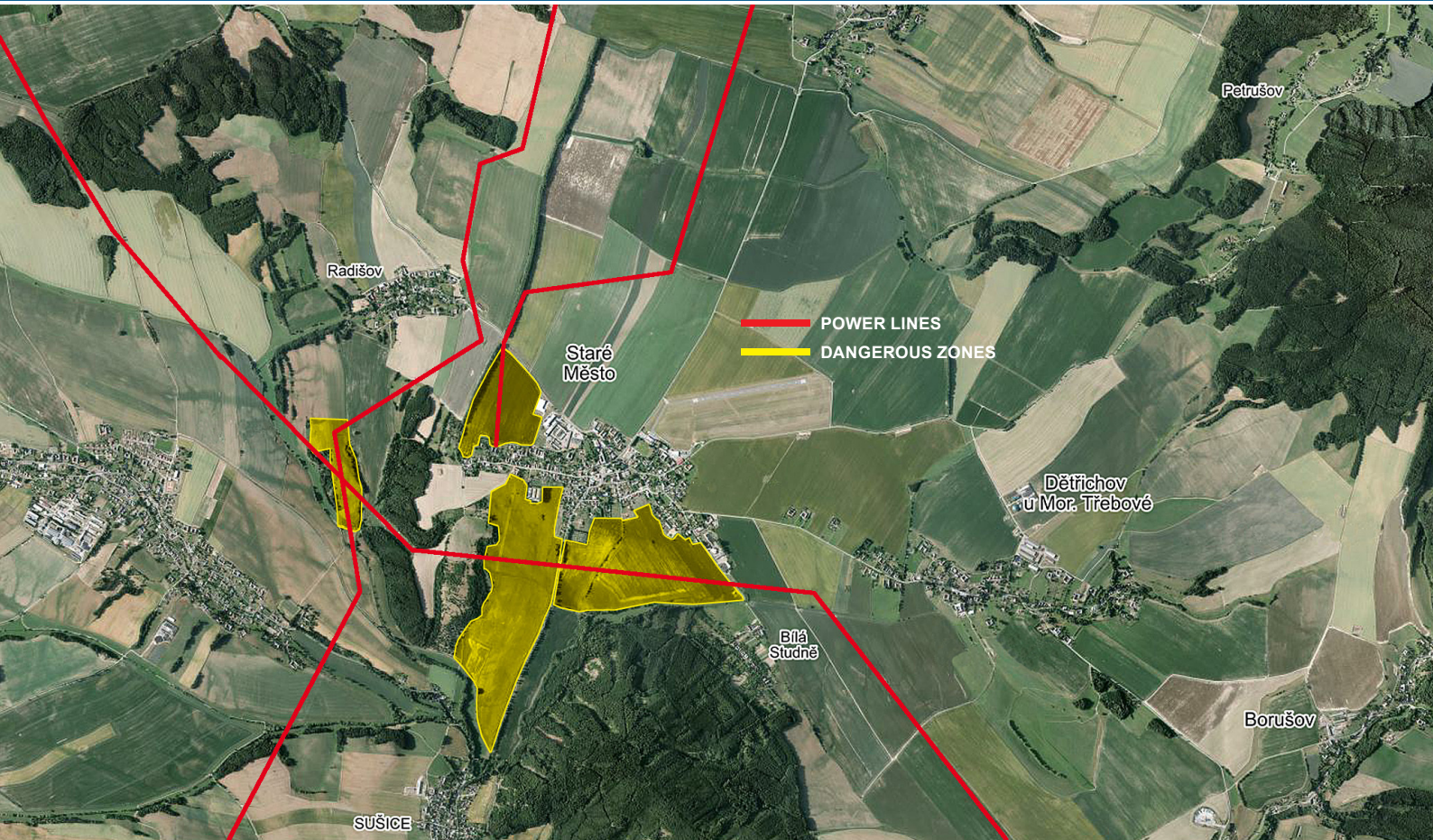
ARRIVAL, LANDING – RWY26



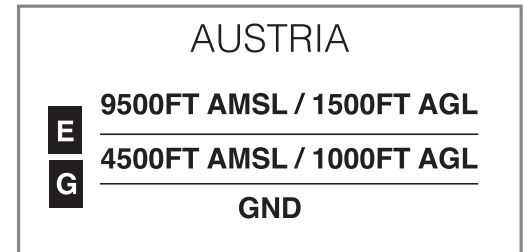
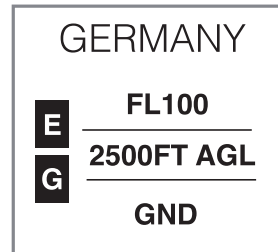
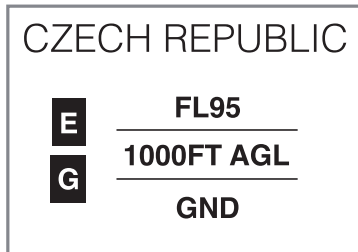
FINISH RING



DANGEROUS LANDING ZONES



- maximum height in competition area is **FL95**
- out of airspace structure below FL95



- **COMPETITION LIMIT IS NOT APPLIED**
- **AUP <https://ibs.rlp.cz/home.do> (CZ, AT, DE, PL, SK)**

CTR, TMA CASLAV

