



6th Competition Day
28/07/2017

Moravská Třebová | Czech Republic
23. 7. - 5. 8. 2017

19th FAI EUROPEAN GLIDING CHAMPIONSHIPS
Club, Standard & 20M Classes



Czech language

lesson 6

Dobré ráno. Prosím jedno pivo.
Počasí je dnes dobré na chlastání.
Chčije a chčije.
Kde je hospoda?
Doufám, že se vejdu do díry.

Počasí je dnes krásné.
Today weather is beautiful.

Invitation

Czech evening – 19.00 LT

More info (menu) at the website.



Tasks info

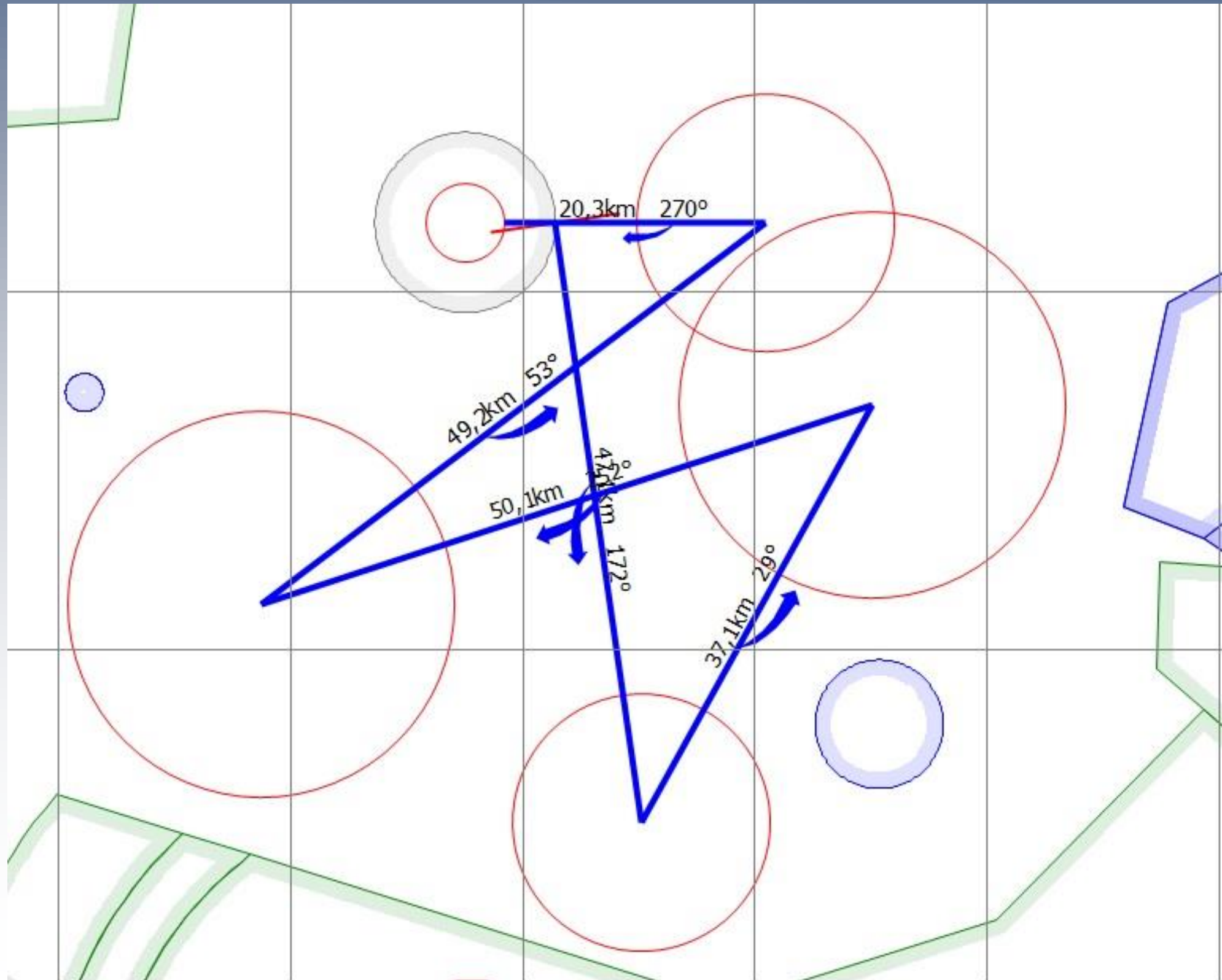
Runway in use	26
Grid open	
- Club, Std	10:30 – 12:00
- 20m	10:30 - 12:00
Expected first launch	12:30 LT
QNH	1010 hPa
Sunset	20:41 LT

For details check your task sheet.

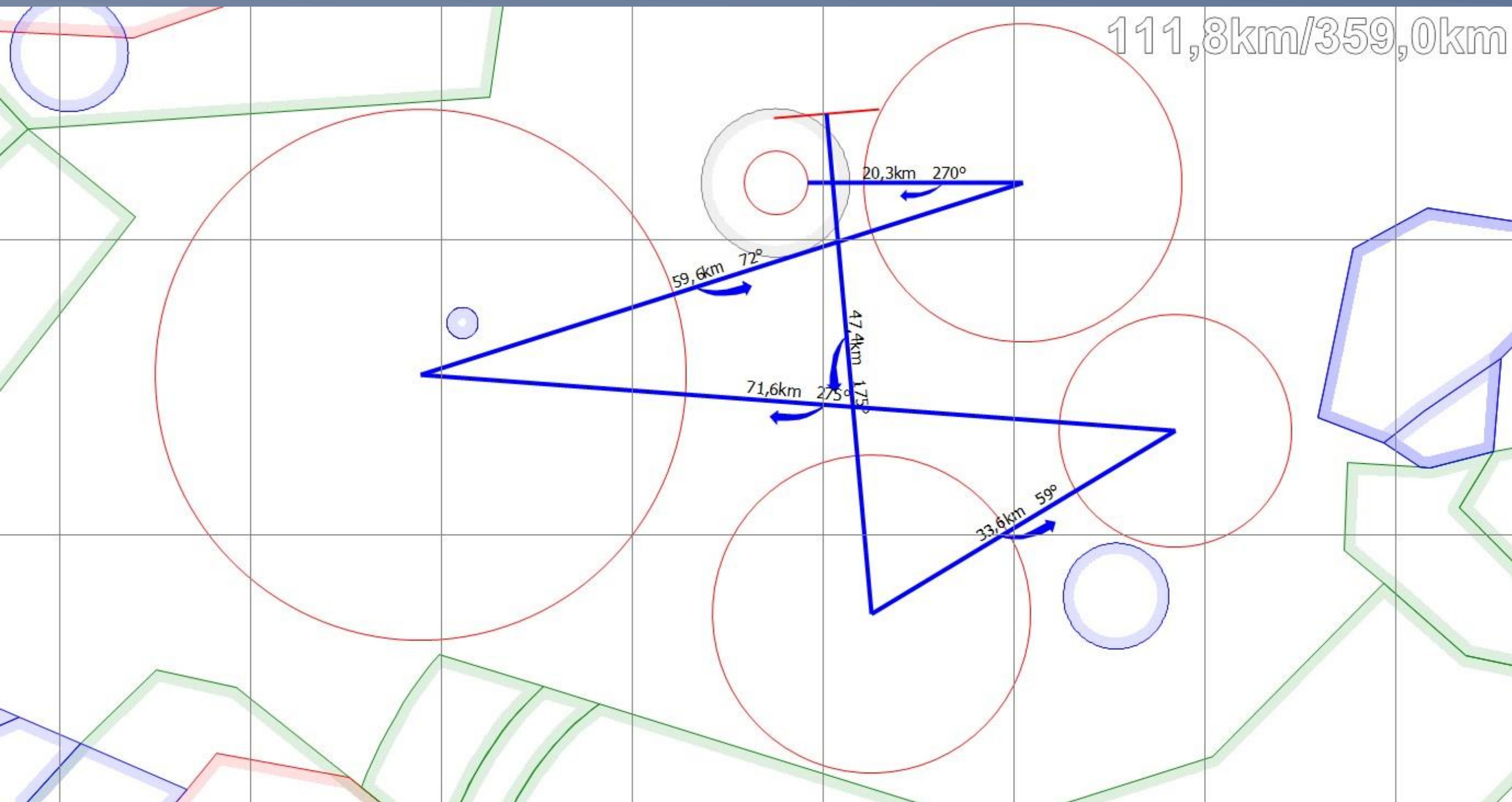


Task A – AAT 11,3/3000,2 (203,8) km

Club class

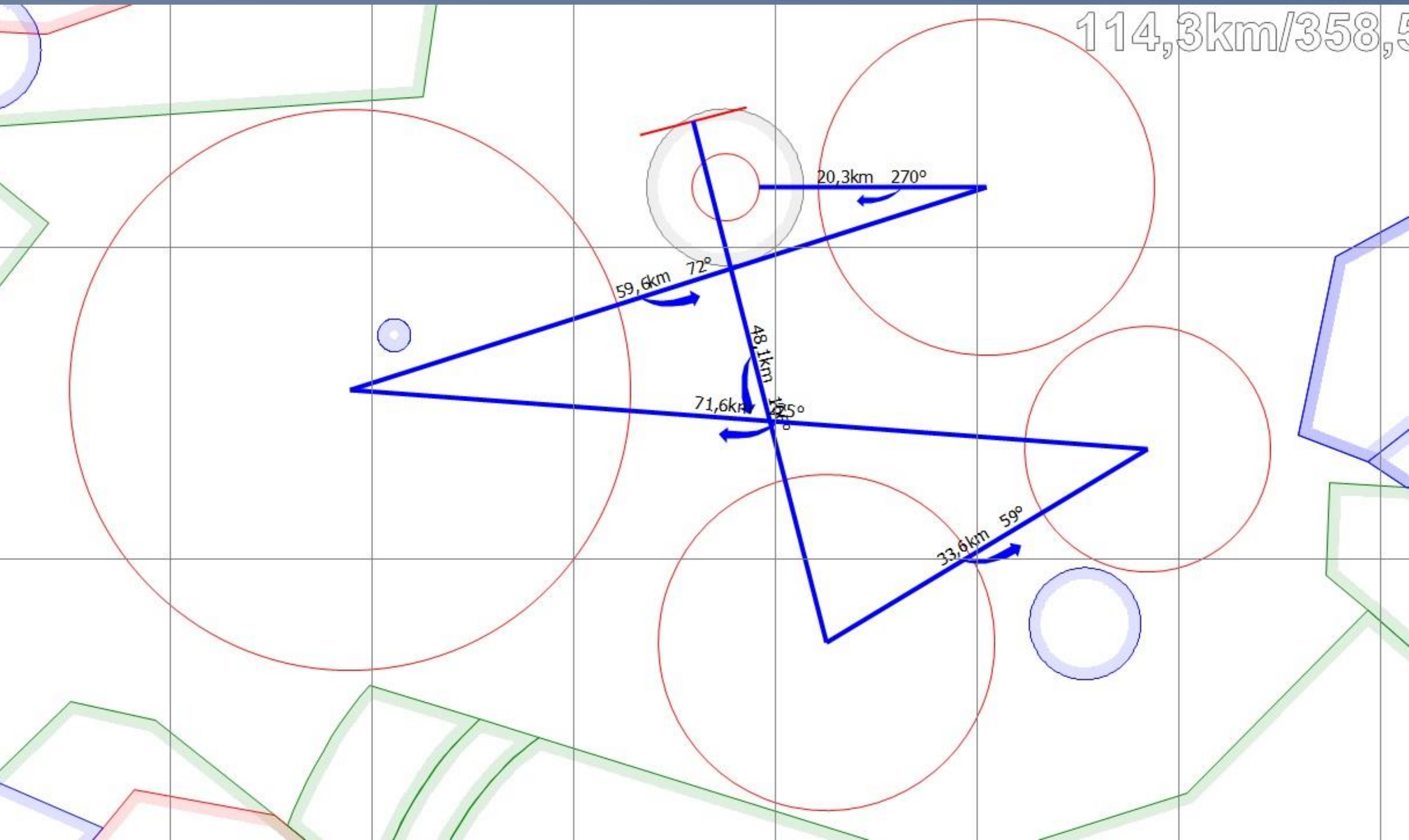


Standard class

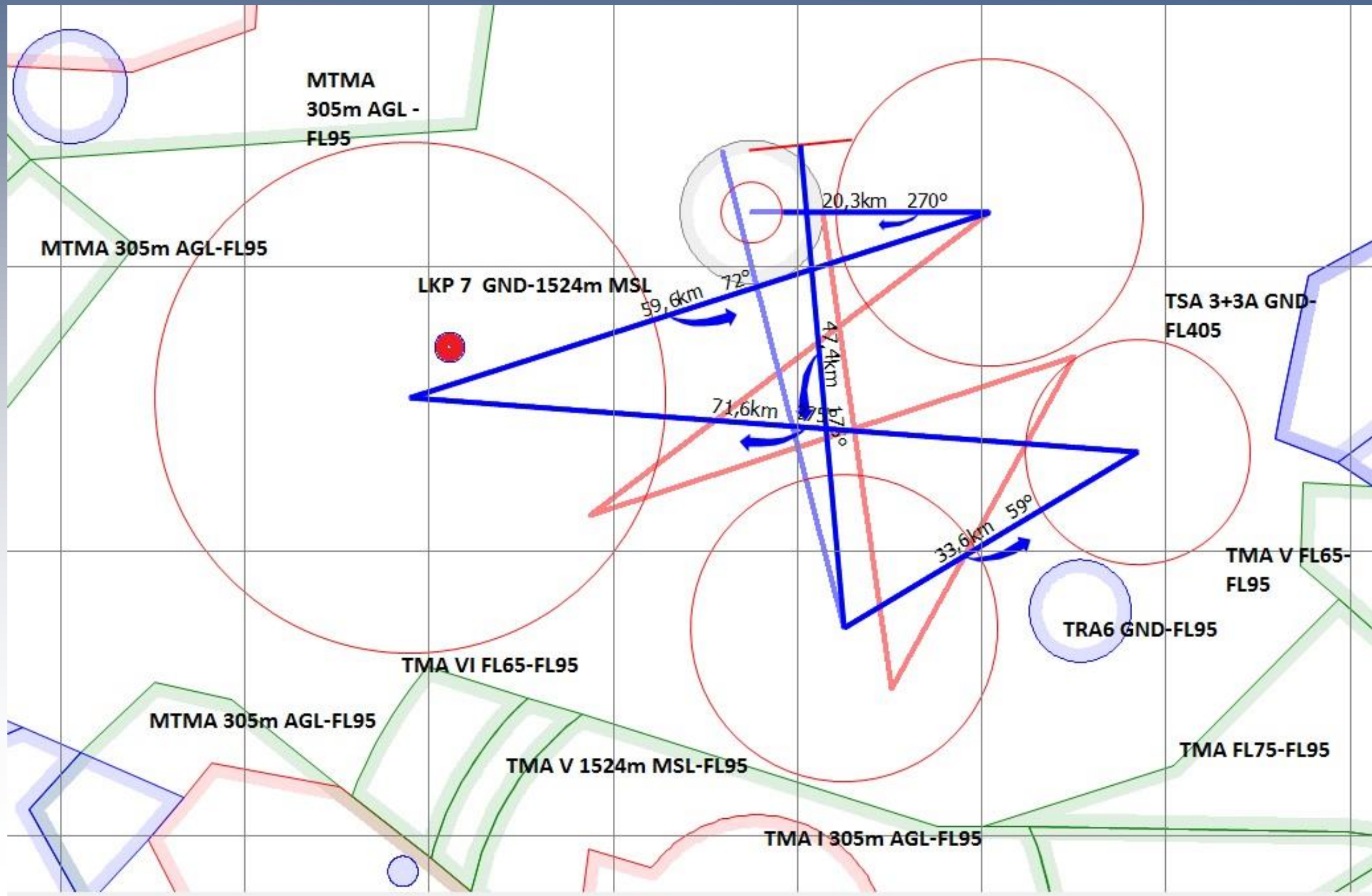


Task A – AAT 114,3/358,5 (233,1) km

20M class



Tasks A – Overlay



Frequencies

- **Competition FRQ – 126,700 MHz**
- **Safety FRQ – 128,300 MHz**
- Airport FRQ – 130,550 MHz
- Team FRQ are published on the www.egc2017.cz
- Updated frequencies for team of FIN and GER



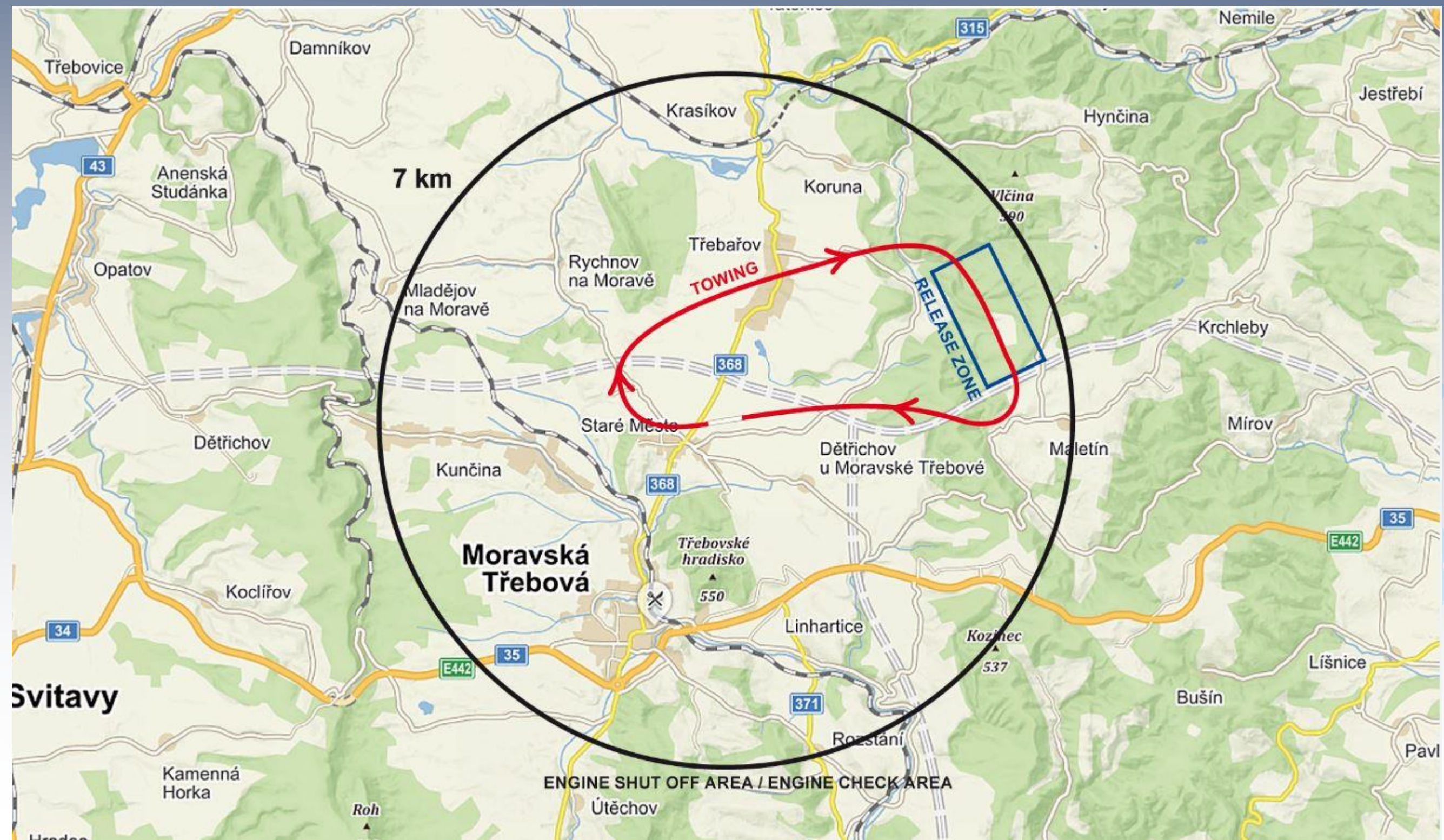
Launch procedure

RWY 26



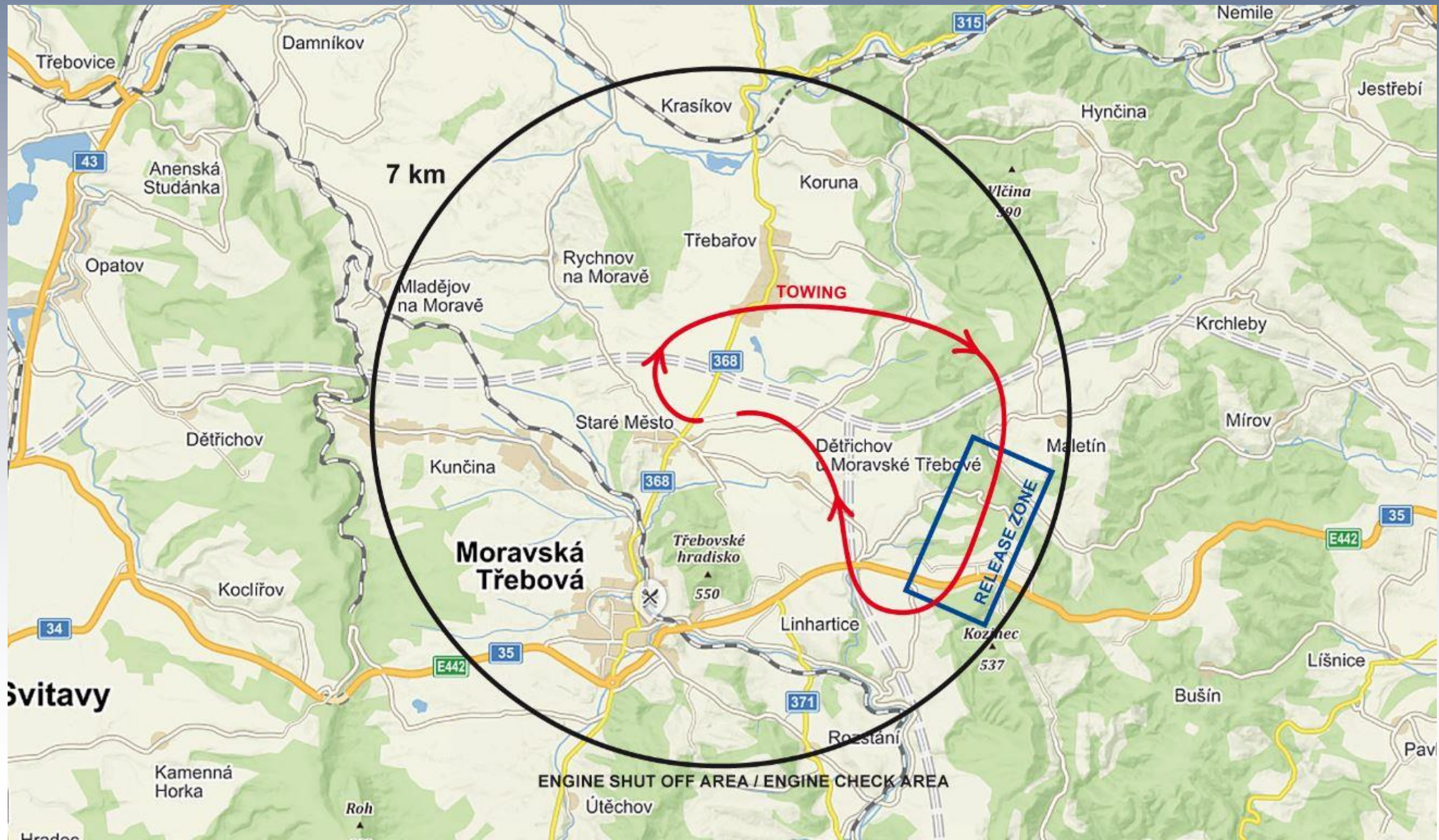
Launch procedure

Club Class - RWY 26; Tow planes landing – RWY 26



Launch procedure

Standard, 20m – RWY 26; Tow planes landing – RWY 26

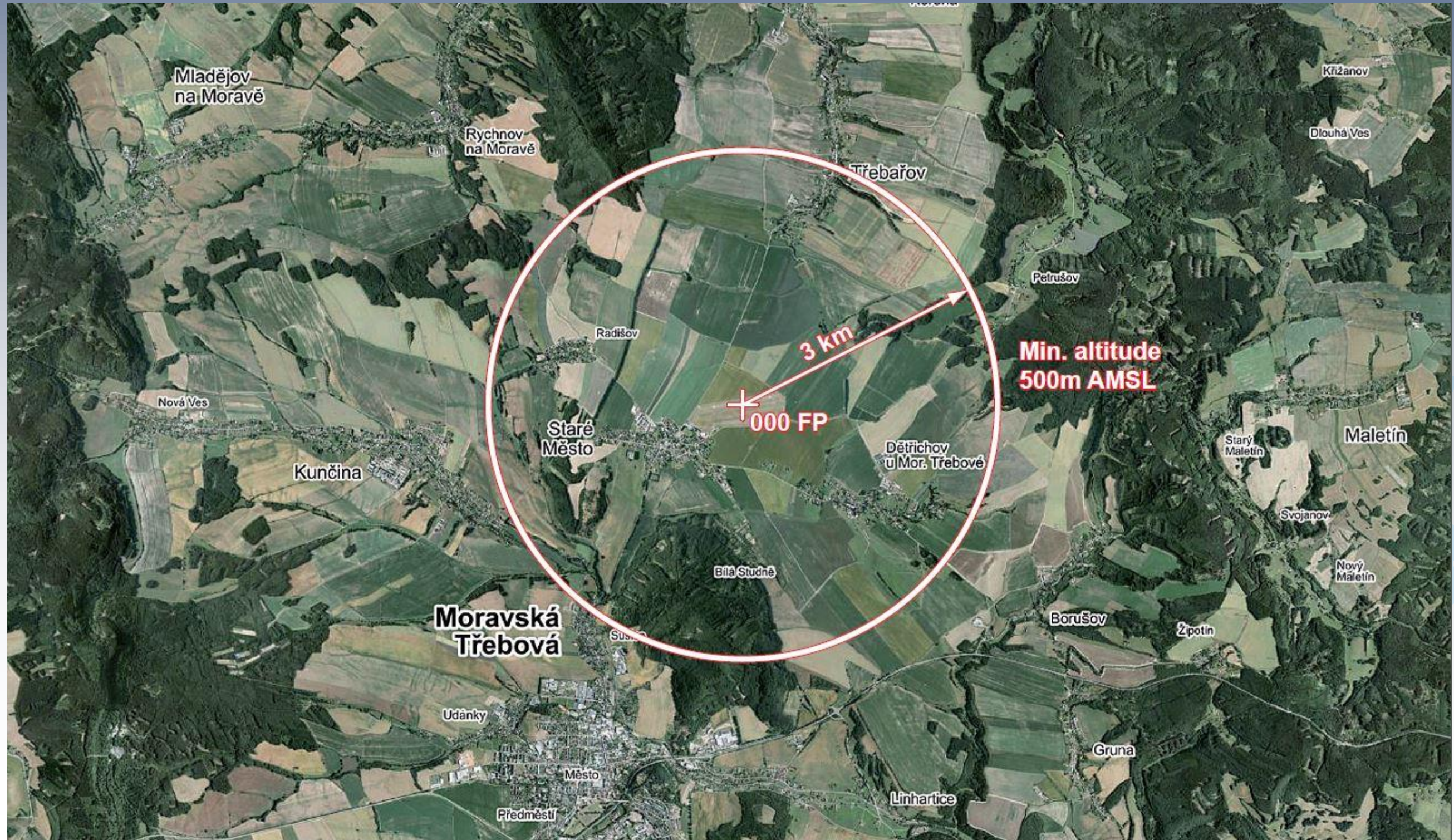


Release procedures

- RELEASE height is 600m AAL (approx. 1000m MSL).
 - Tow plane will rock the wings at the height as a sign to release.
 - After release, the tow plane will continue straight ahead to make sure you have released safely and then will descend.
 - Please DO NOT circle in release zone during launches below 1200m MSL.
- 

Finish ring

3 km circle, alt. 500m AMSL



Finishing procedures

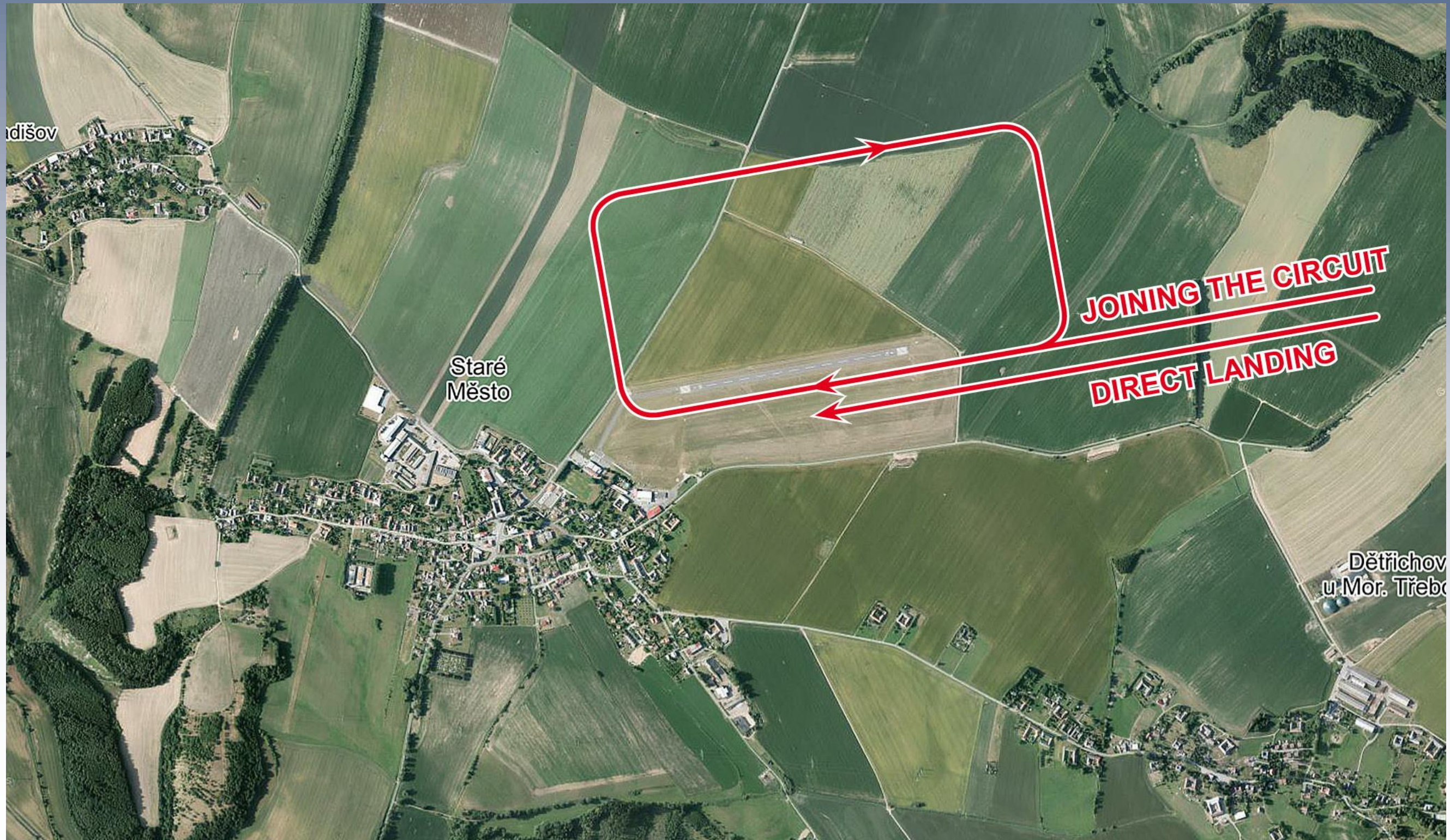
- TREBOVA TOWER: 126,700 MHz
- **Announce finish at 10 km to final**
- **ENGLISH only, speak clearly**
- TREBOVA TOWER → “CN” → 10 km → direct landing/speed finish”
- Minimum altitude at the finish ring : **500m MSL**
- No pull-ups after crossing the finish ring
- Avoid dangerous maneuvers in low altitude

Landing procedures

- No turns - straight roll out
- Long landings to save space for other landing gliders behind
- Do not cross the runway before and during landings!
- Crew must stay in the designated area and be ready to transport the glider away
- Whole strip is available for landing, asphalt runway can be used after announcement, in a case of need use grass north of asphalt runway

Landing procedures

RWY 26



Questions

?

?

?

?

?

?

?

?

?

?

?



Sponsors

PARTNERS



SPONSORS



ALWAYS A
BETTER WAY

MEDIA PARTNERS

