

# *Opening Briefing*



19th FAI EUROPEAN GLIDING CHAMPIONSHIPS  
Club, Standard & 20M Classes





[www.egc2017.cz](http://www.egc2017.cz)

# Czech language

---

## lesson 1

---

**Dobré ráno. Prosím jedno pivo.**

**Good morning. One beer please.**



# Remarks

---

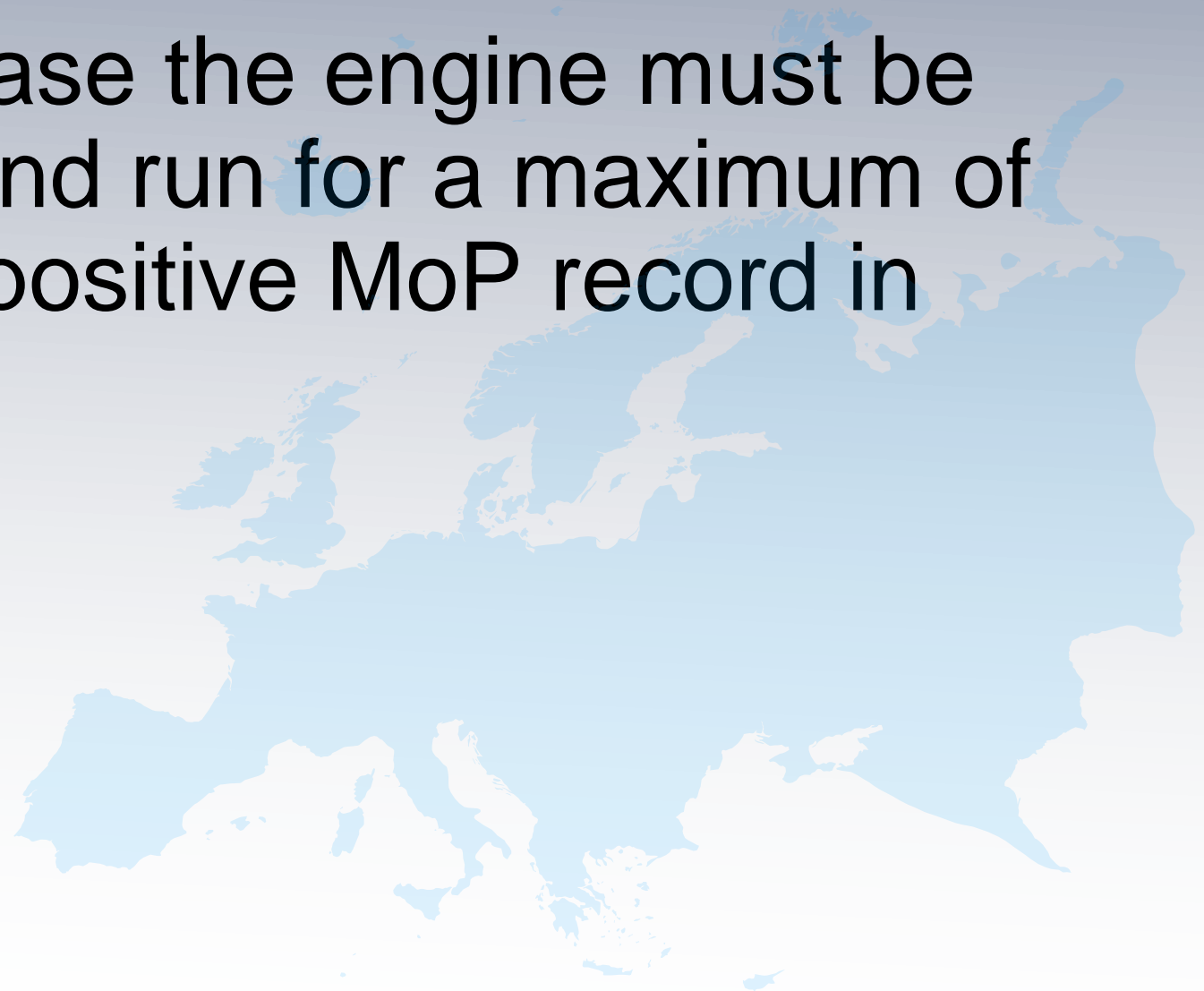
- All cars MUST be parked in designated parking zone 15 minutes before commence of launch
- All cars should be signed by CN
- Please send your IGC file via website (preferably) or by email [igc@egc2017.cz](mailto:igc@egc2017.cz)



# Remarks - MoP

---

- Self-launching MoP -> follow tow path, Engine shut down release area at or below 650m AGL.
- Local procedures – Part G, para 4.
- MoP's in tow -> After release the engine must be started within 5 minutes and run for a maximum of two minutes to provide a positive MoP record in the Flight Log.



# Remarks

---

- **NO children, dogs, cats, horses, crocodiles, elephants, happy hippos, kiwis, pandas, snakes, emus, turtles, tigers, lions, pumas, cheetahs, gepards, giraffes (can't fit through hangar doors), kangaroos, mice, monkeys, mooses, deers, parents, owls, worms, cockroaches, fleas, flies, mosquitos, butterflies, onions, scorpions, dolphins, whales, penguins, piranhas, bears, beers, hawks, snails, t-rexes, lizards, wizards, ghosts, ants, ents, centipedes, wolves, werewolf, vampires, zombies, crickets, mummies, martians (scorer excluded), unicorns, remorses, sharks, walrus, seals, caterpillars, parrots and carrots**



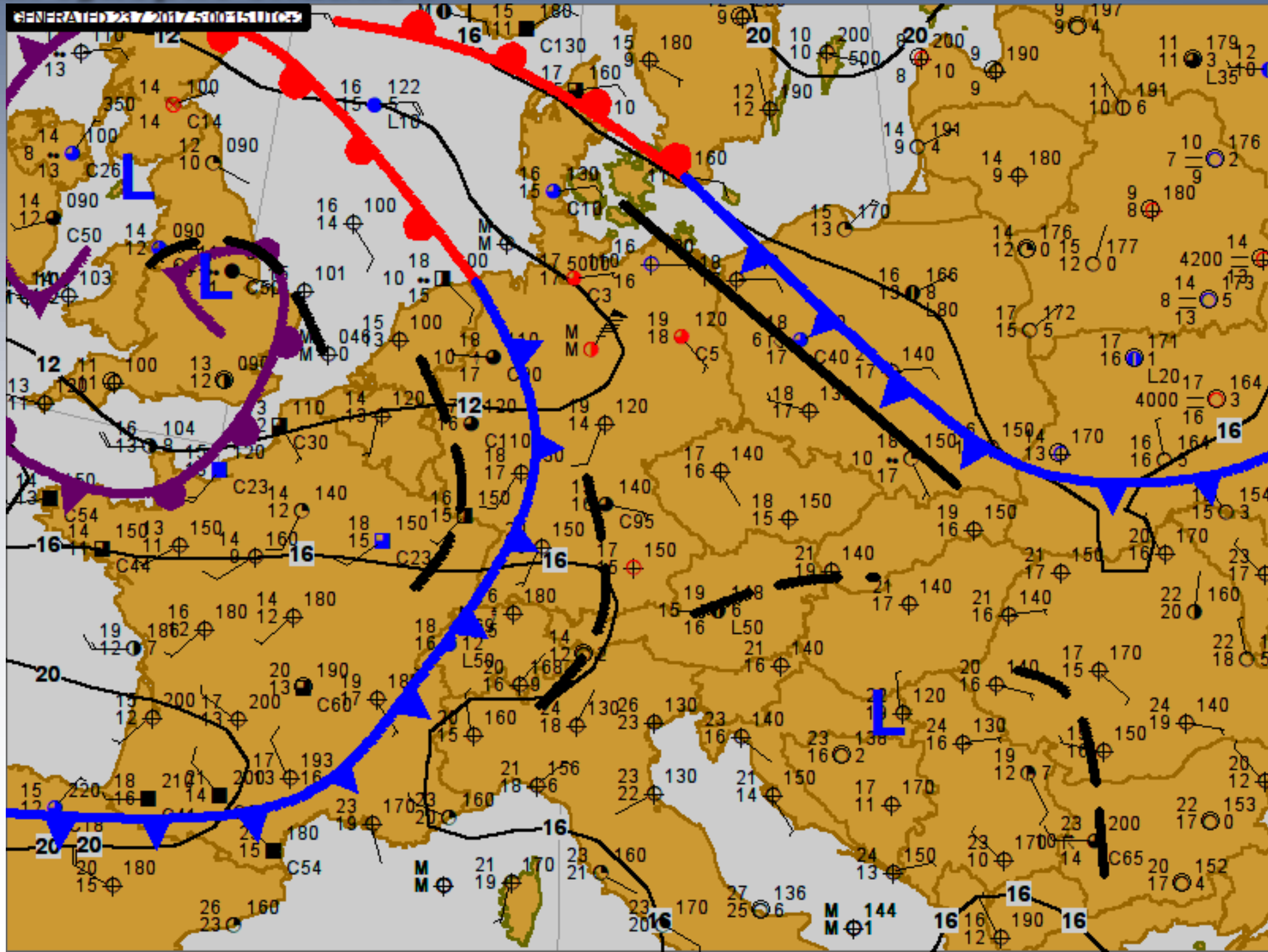
# Weather

---



# Weather

## Actual synoptic situation



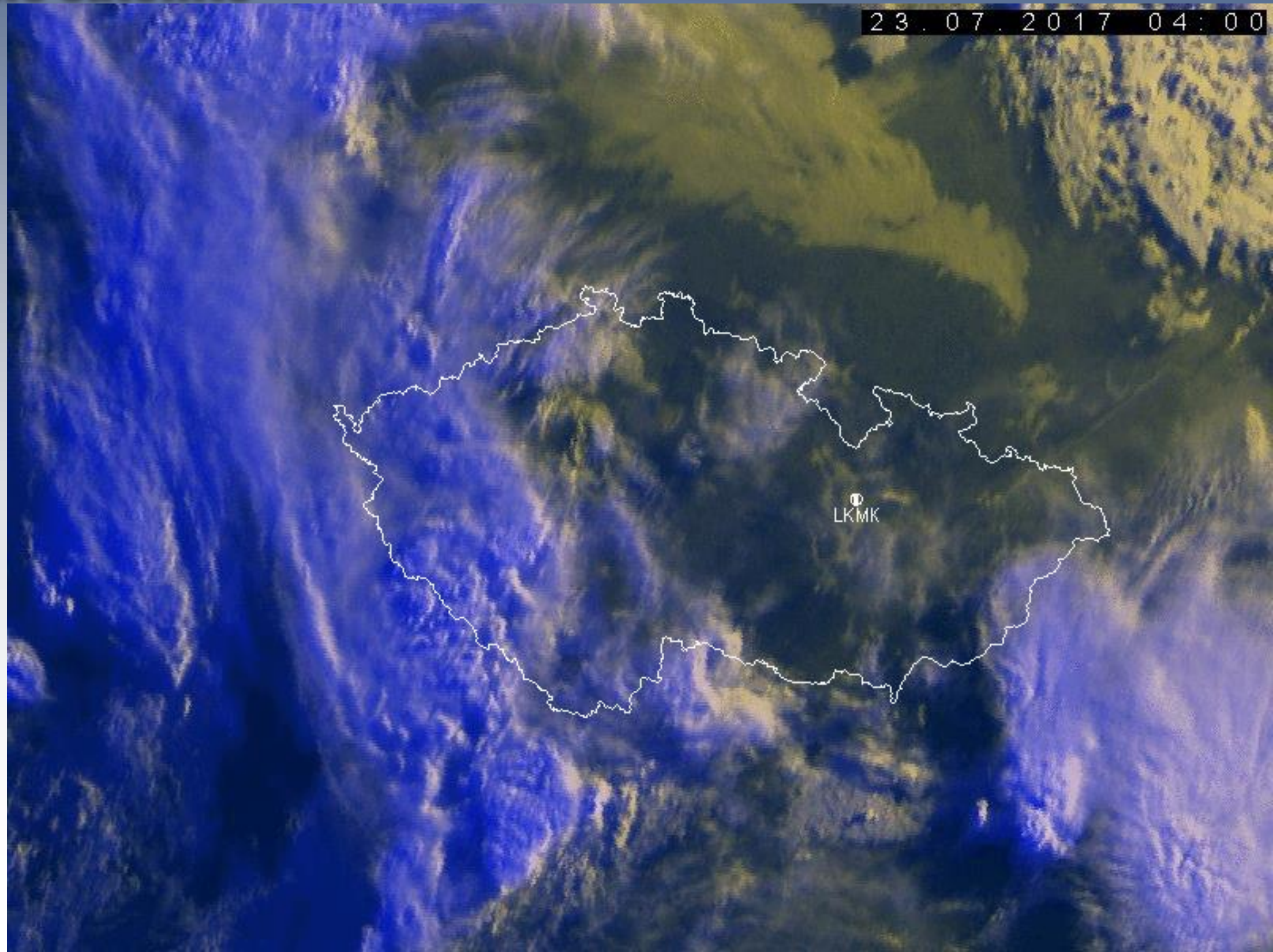


# Weather

---

## Visible satellite

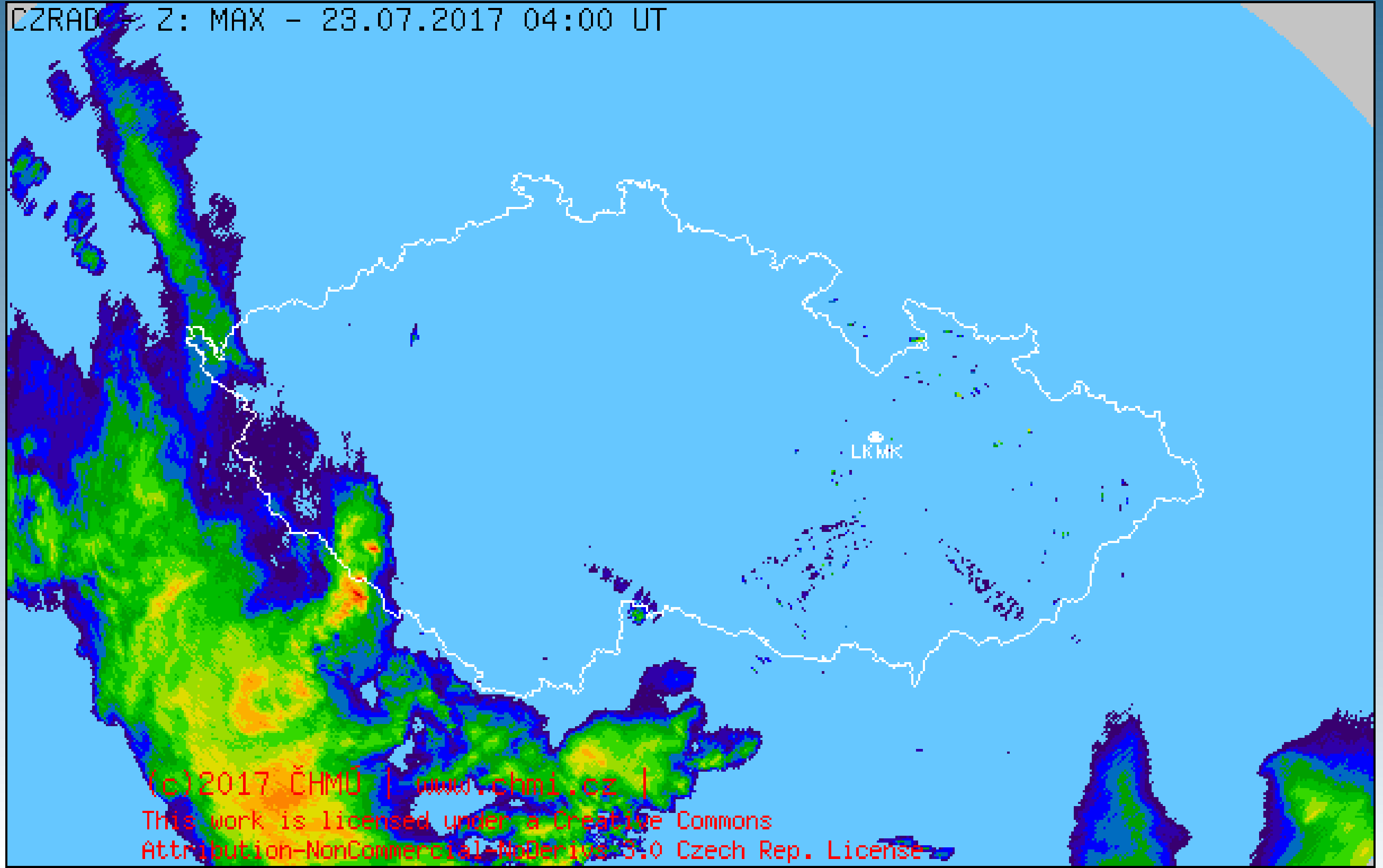
---



# Weather

## CHMI satellite data

CZRAD Z: MAX - 23.07.2017 04:00 UT

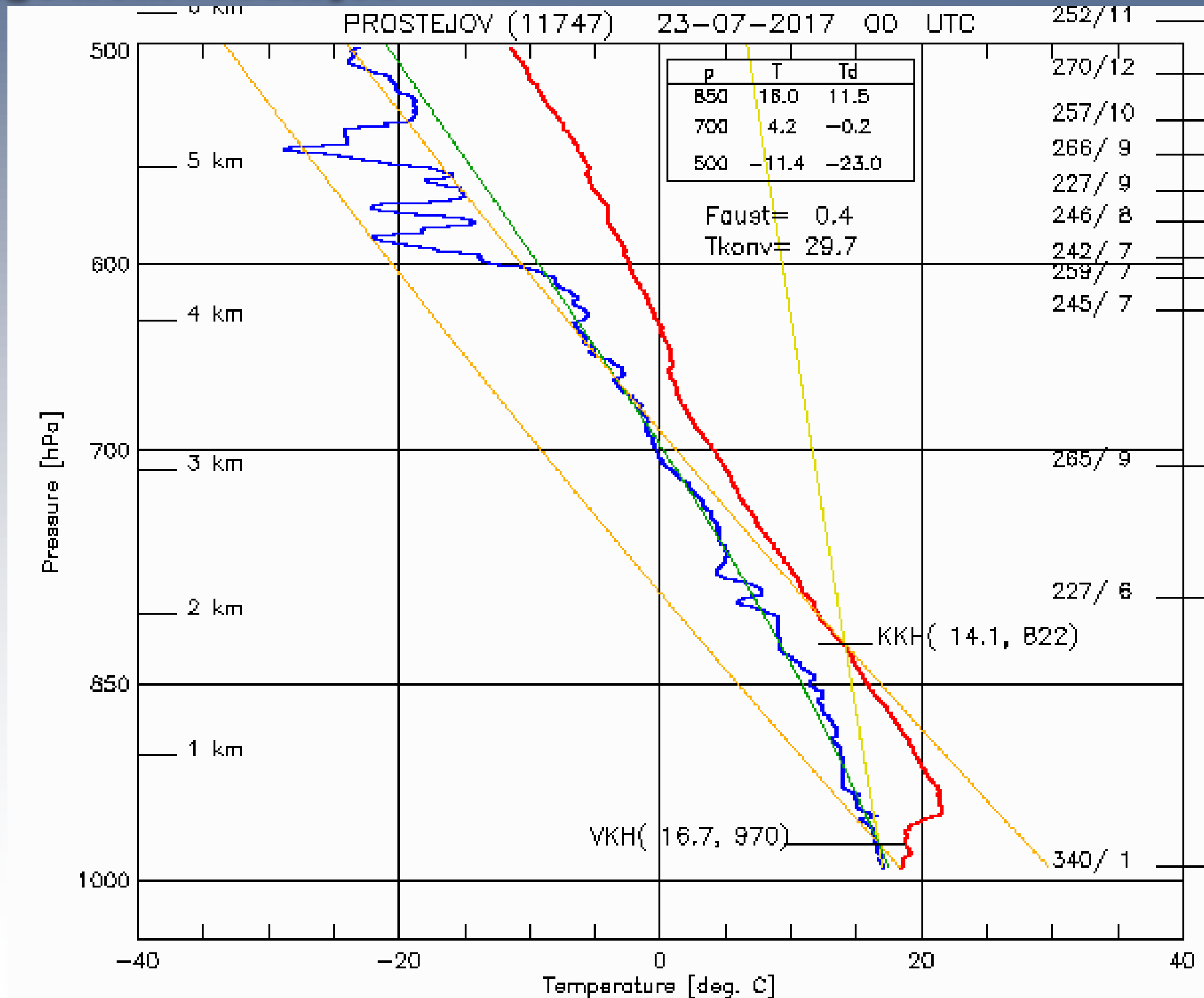


(c)2017 ČHMÚ | [www.chmi.cz](http://www.chmi.cz) |

This work is licensed under a Creative Commons  
Attribution-NonCommercial-NoDerivs 3.0 Czech Rep. License

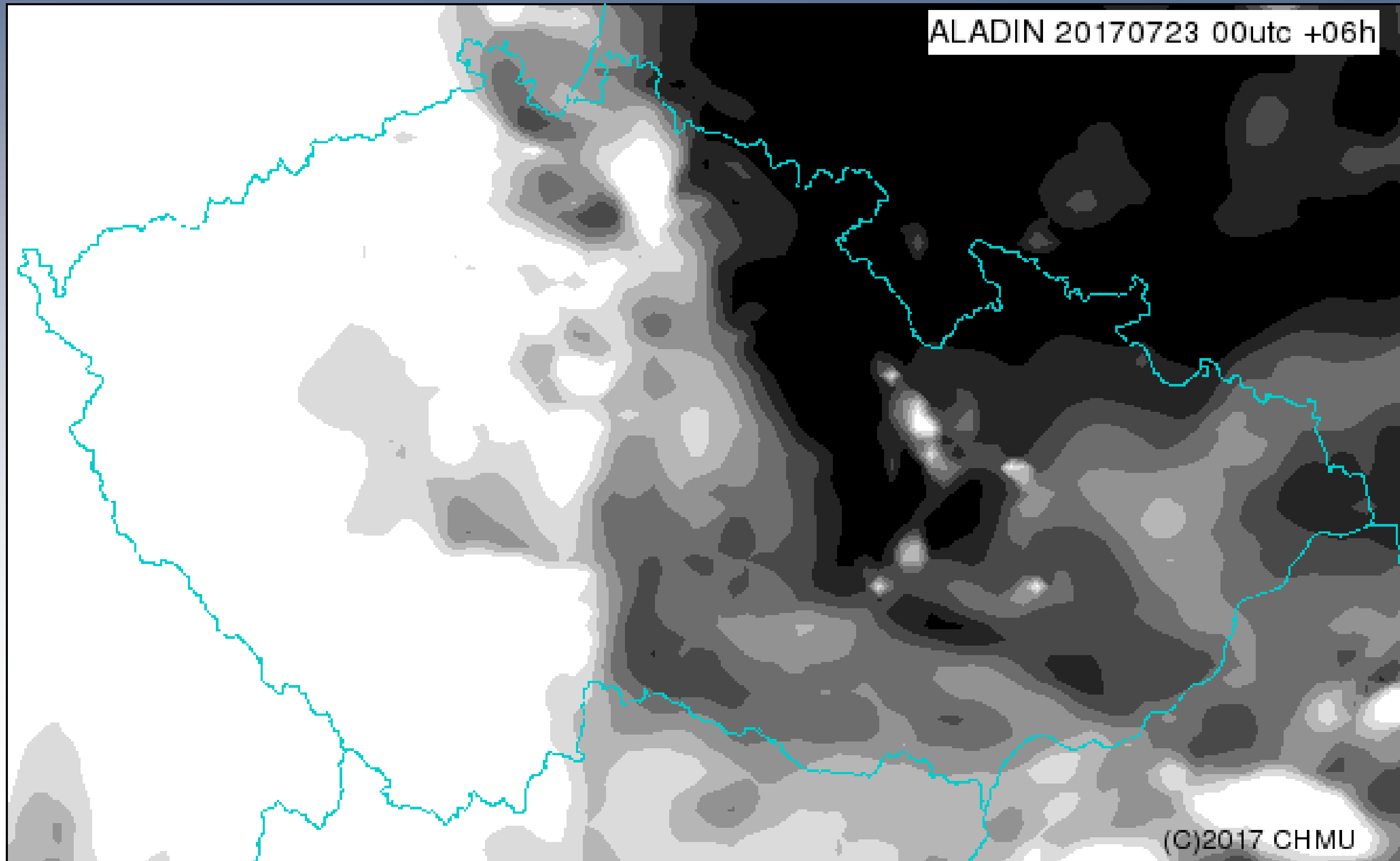
# Weather

## Soundage from Prostějov



# Weather

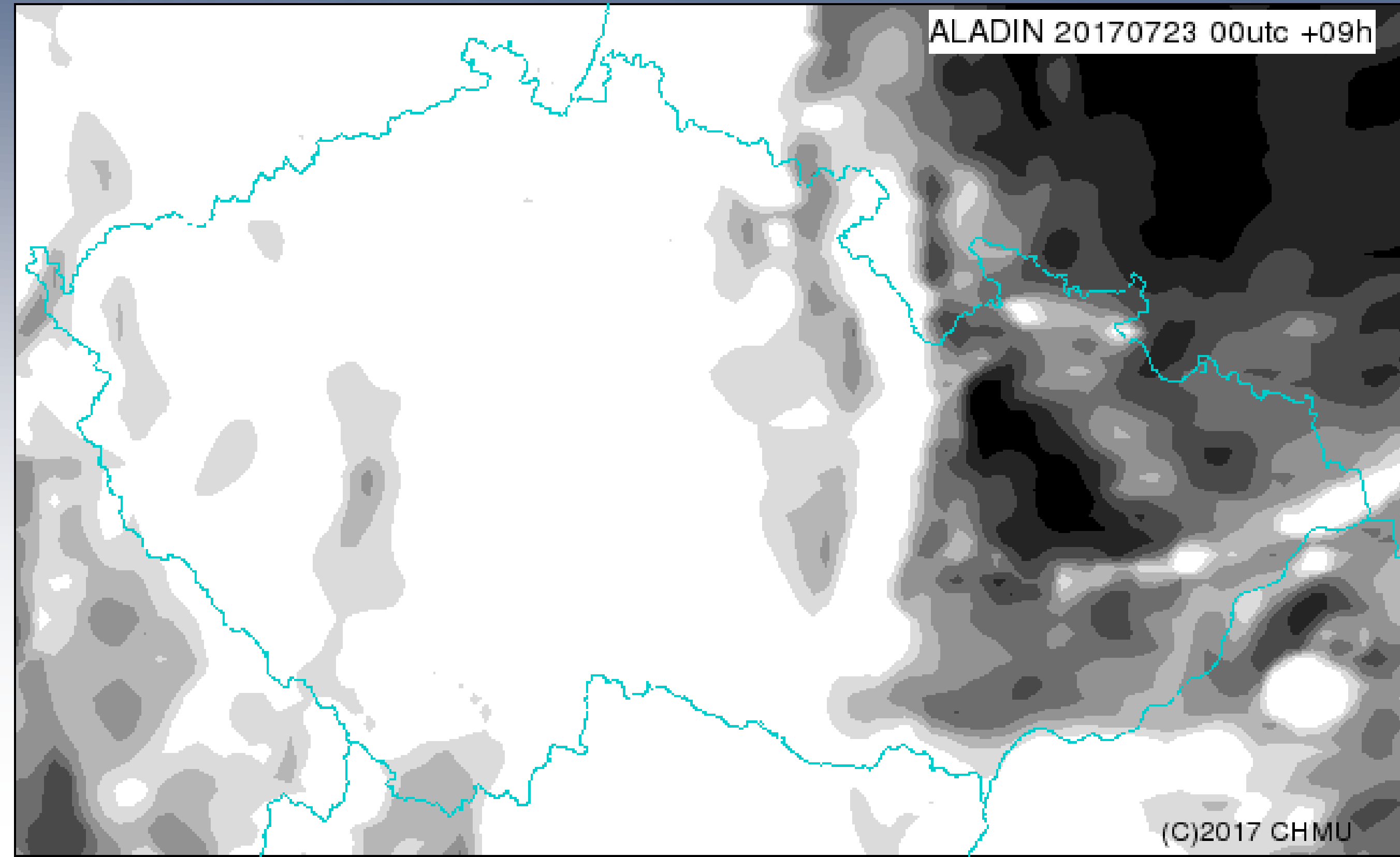
## Forecast of total clouds amount



# Weather

## Forecast of total clouds amount

ALADIN 20170723 00utc +09h



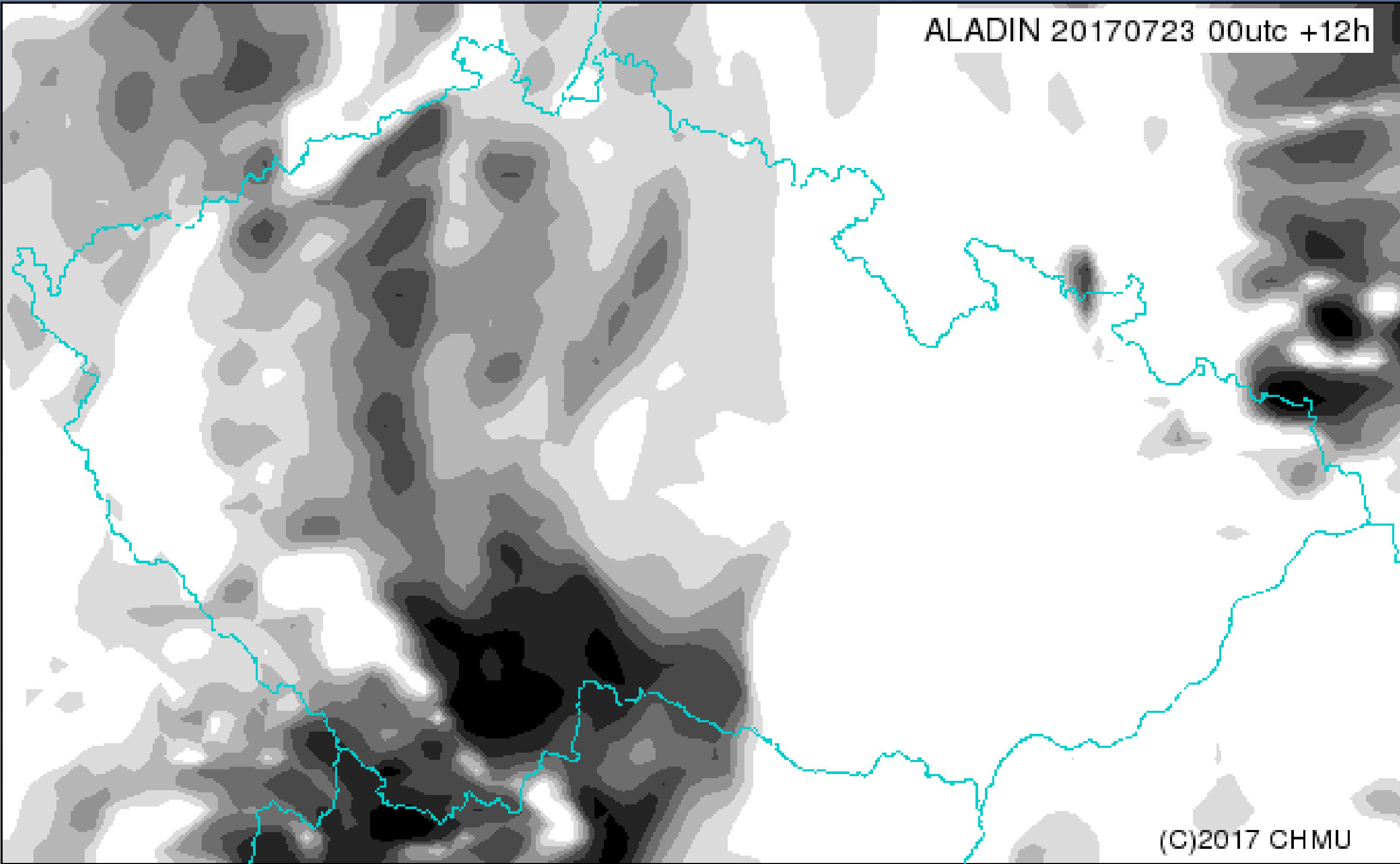
(C)2017 CHMU



# Weather

## Forecast of total clouds amount

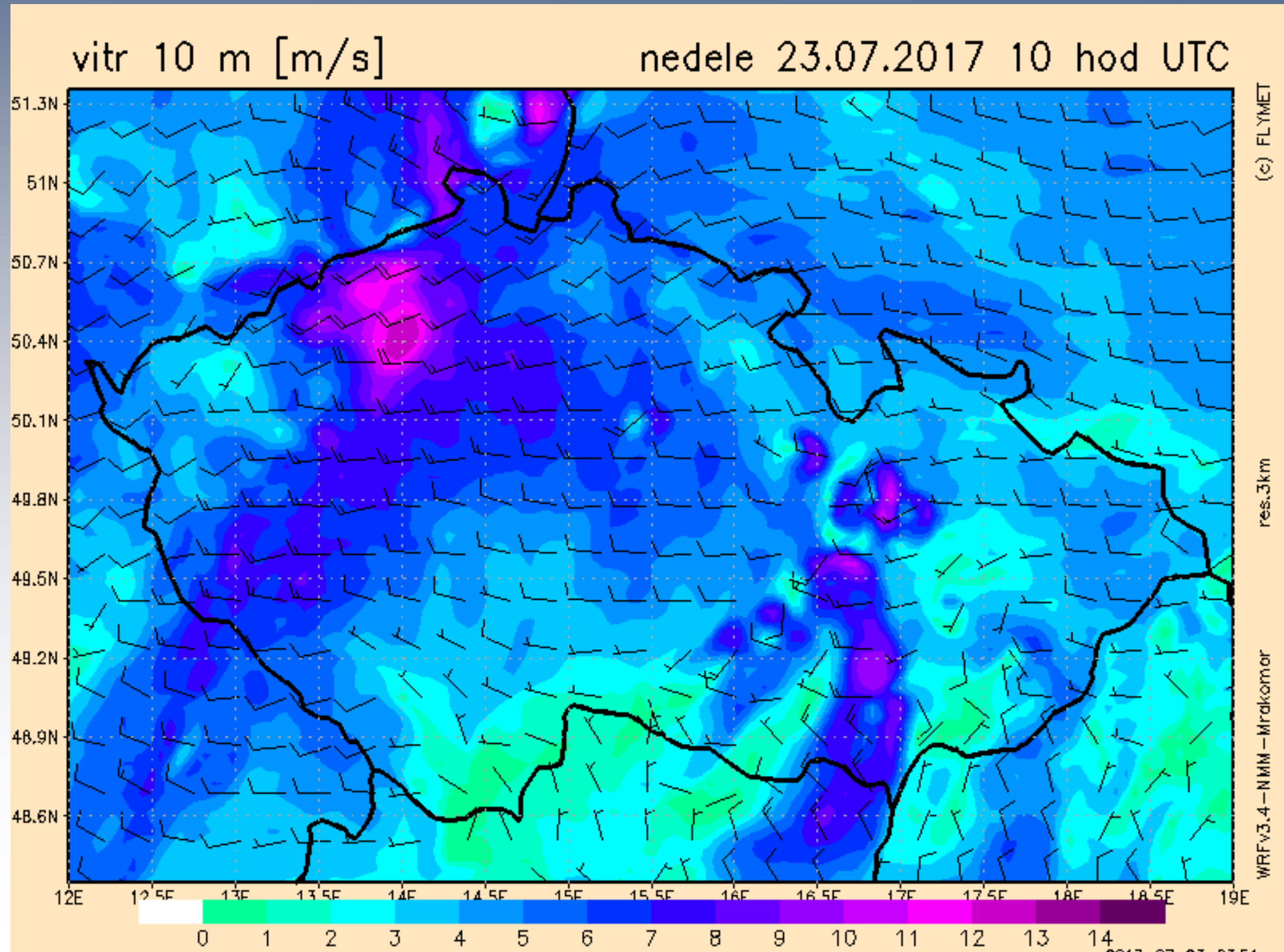
ALADIN 20170723 00utc +12h



(C)2017 CHMU

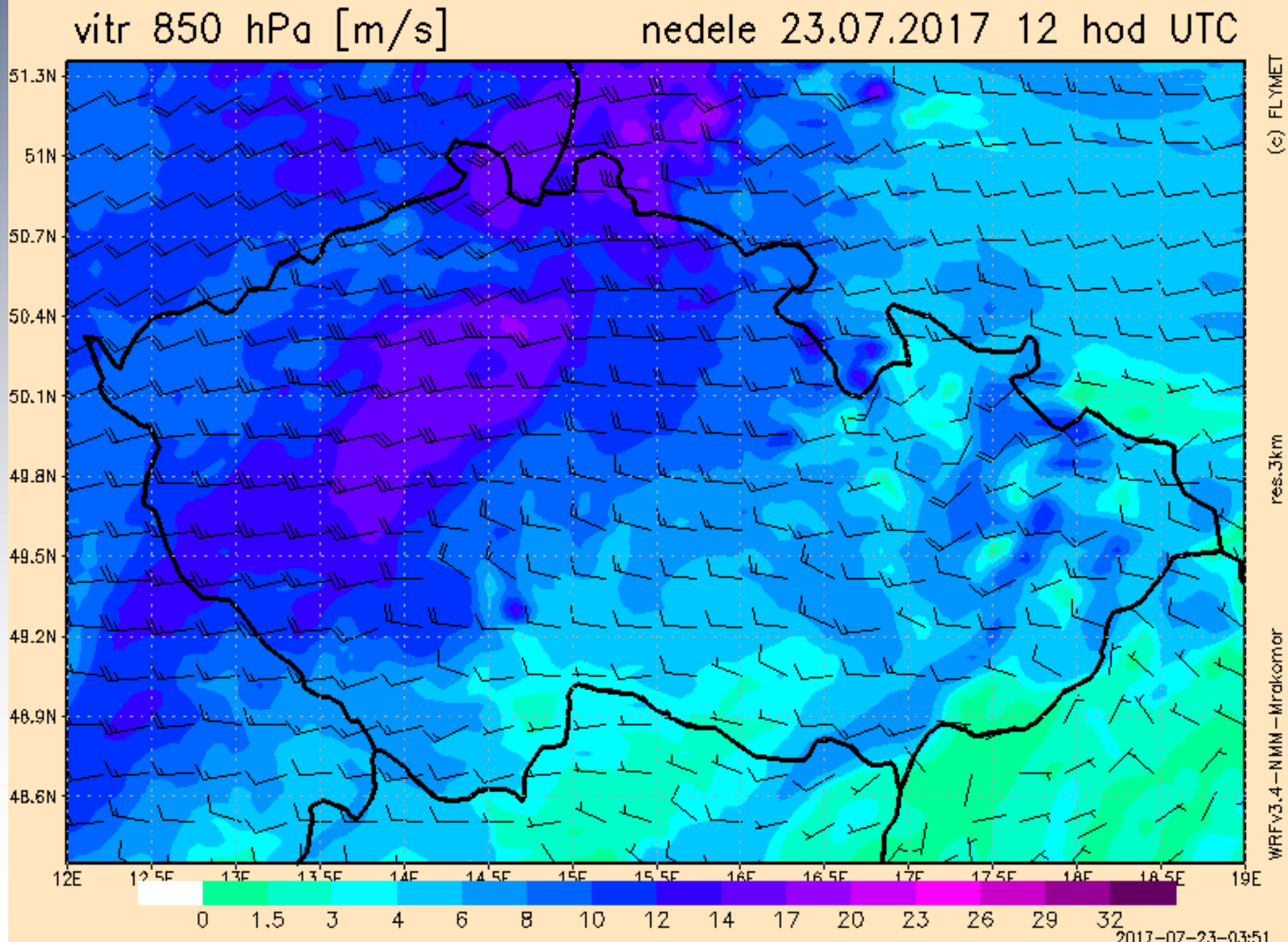
# Weather

## GND wind forecast



# Weather

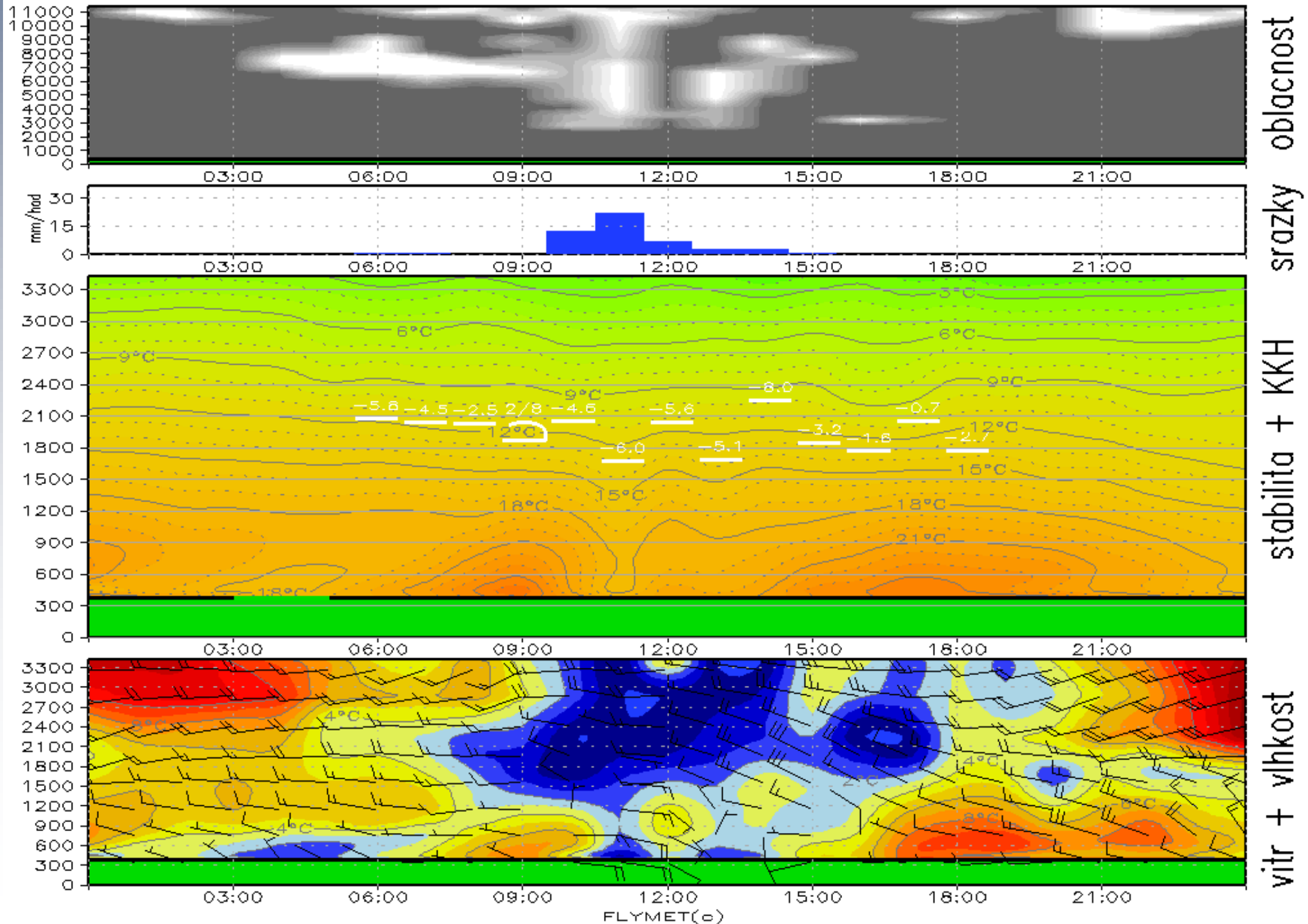
## 850hPa wind forecast



# Weather

## Soaring meteogram of LKMK

Meteogram MORAVSKA-TREBOVA na nedeli 23.07.2017



# Tasks info

---

Runway in use	26
Grid order	08:30 – 10:00; 10:30 - 11:15
Expected first lanch	11:30 LT
QNH	1015 hPa
Sunset	20:47 LT

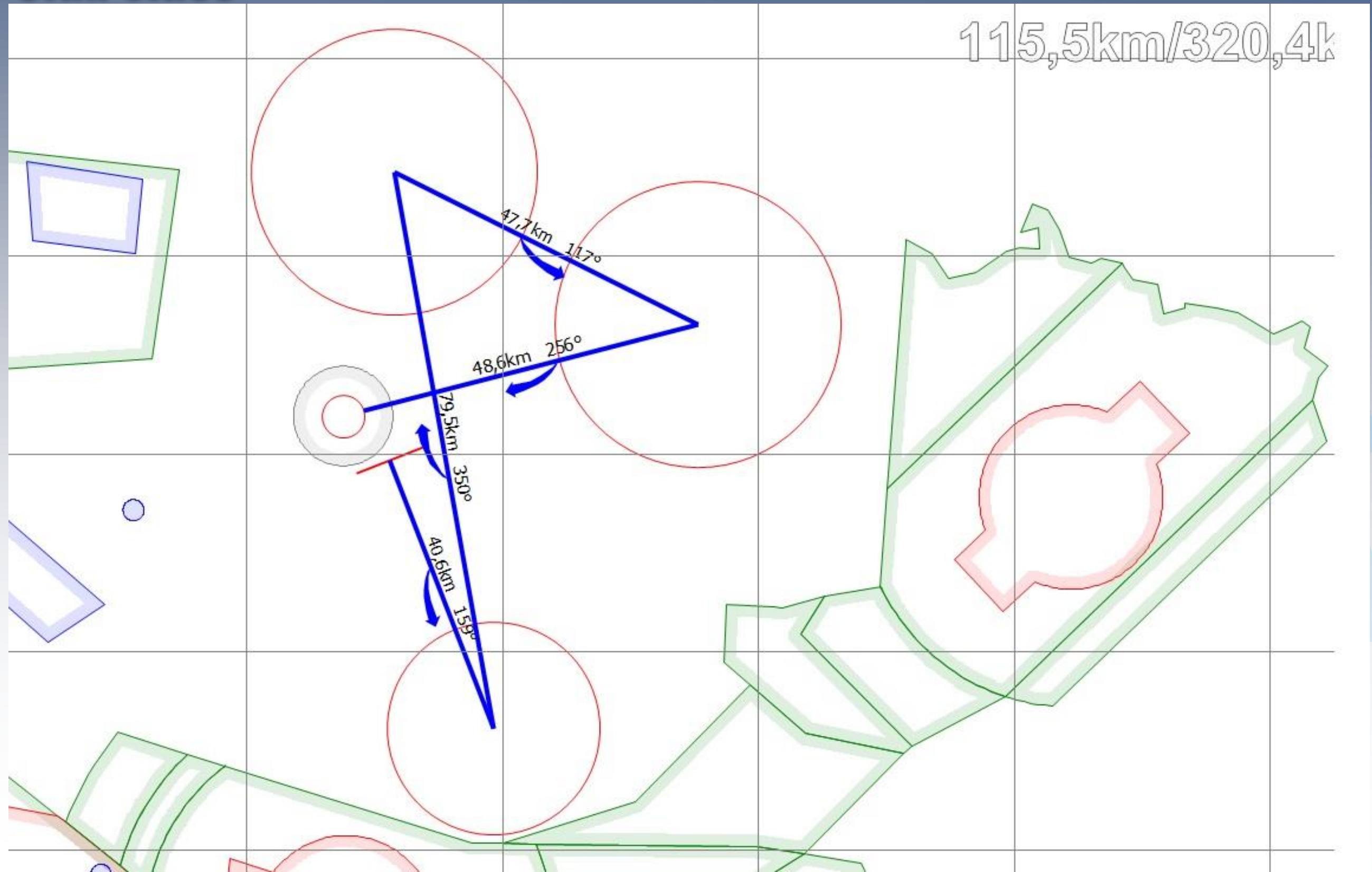
**For details check your task sheet.**





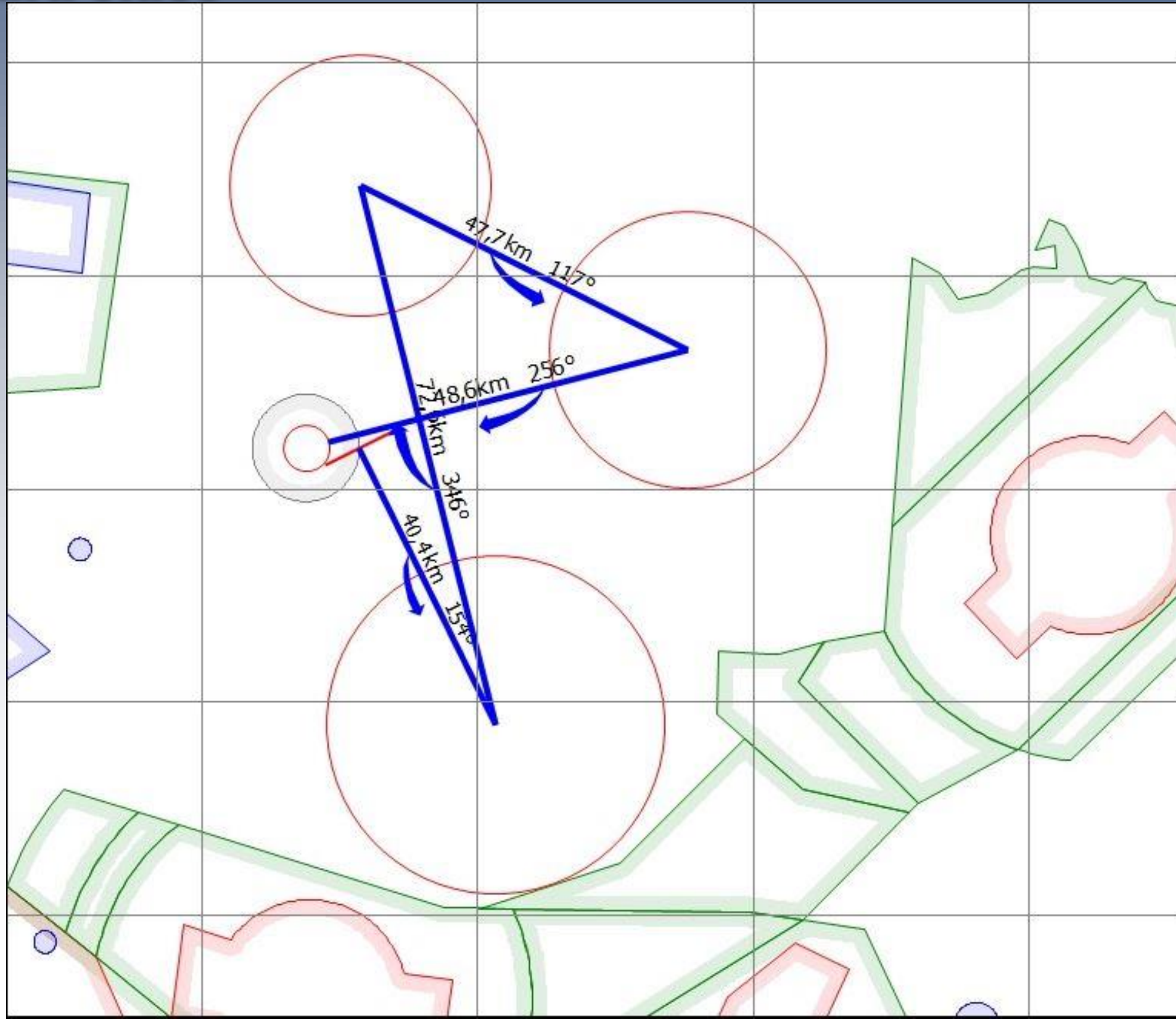
# Task A – AAT 115,5/320,4 (216,4) km

Club class



# Task A – AAT 103,0/318,4 (209,3) km

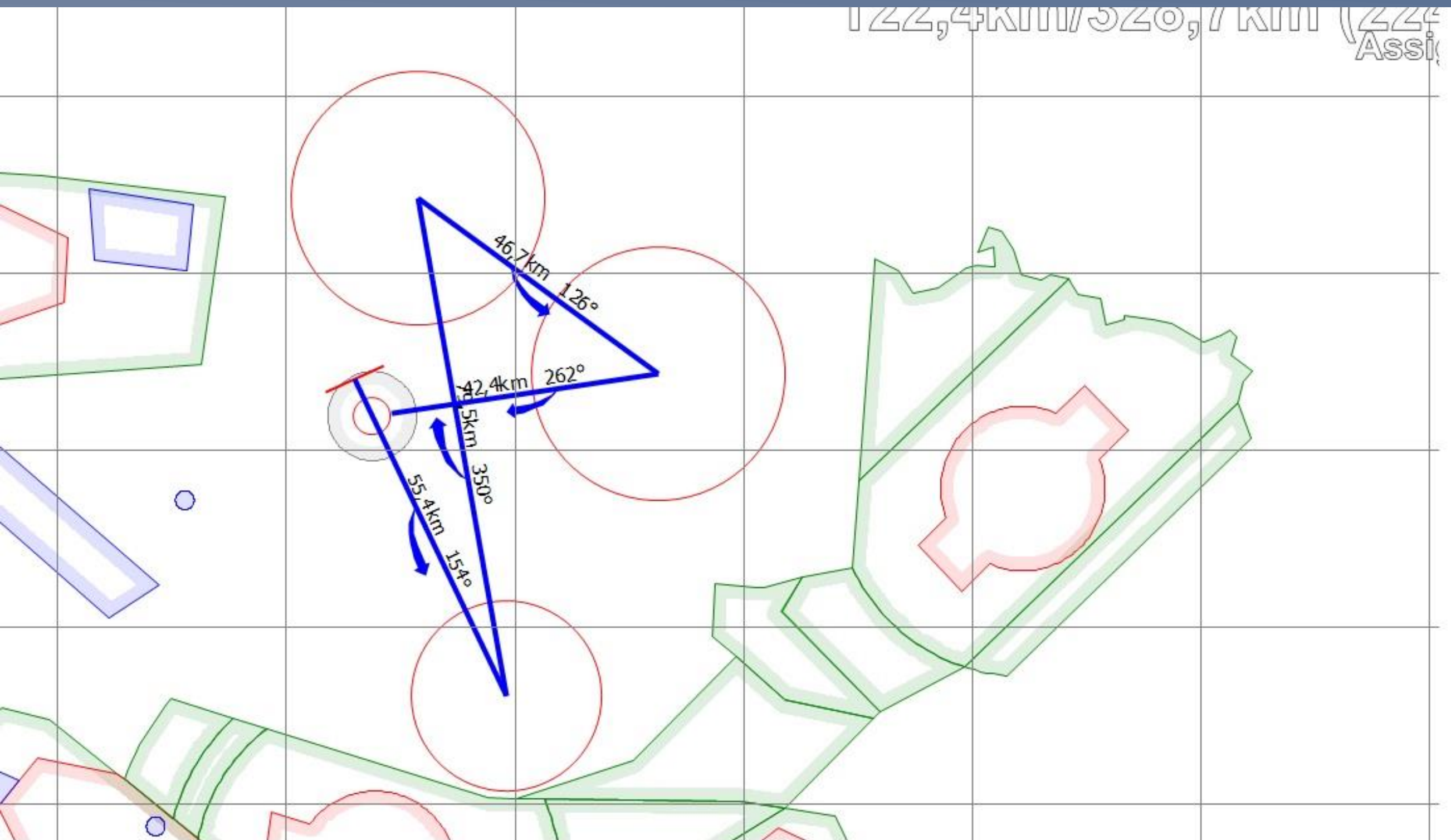
Standard class



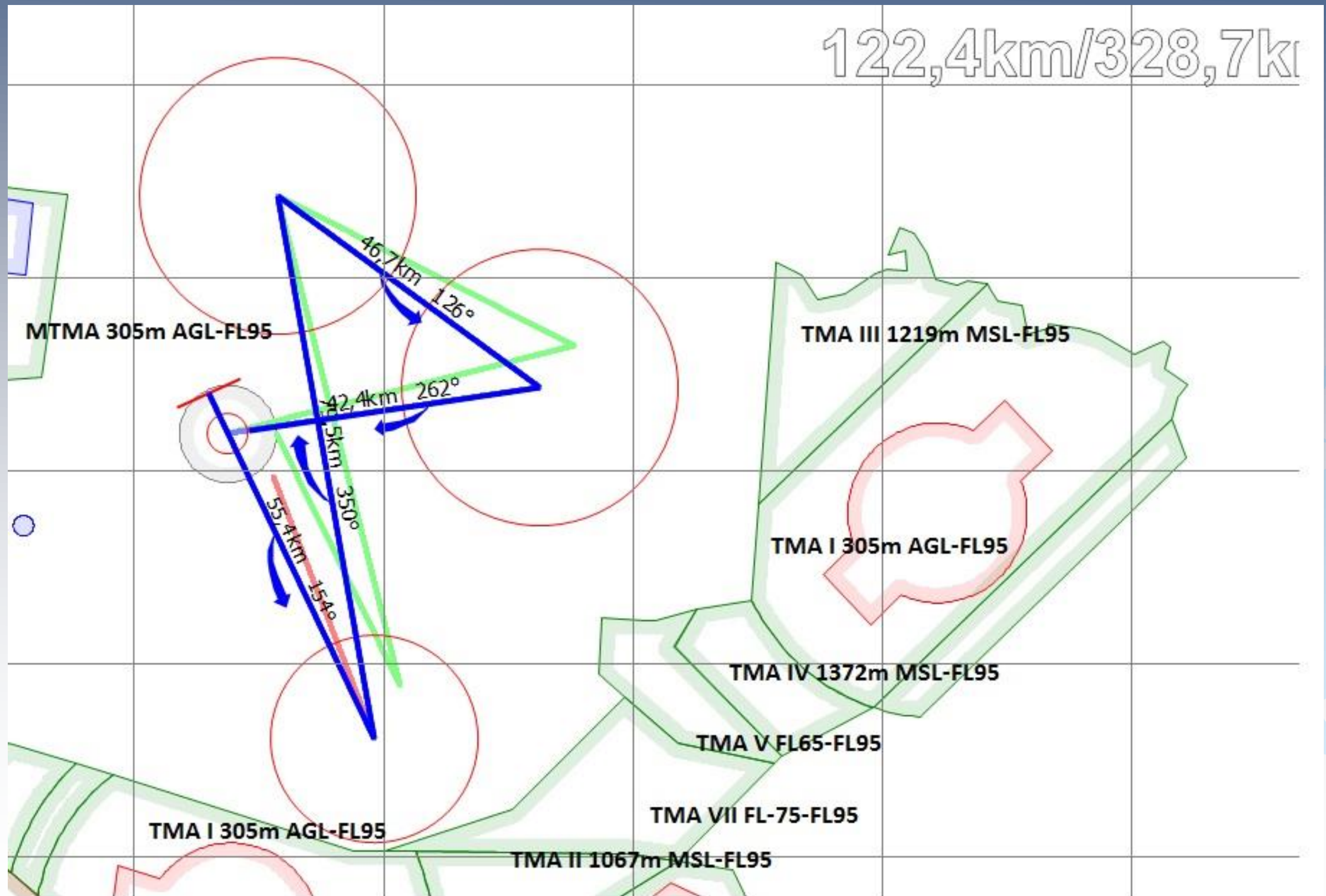


# Task A – AAT 122,4/328,7 (224,0) km

20M class



# Tasks A – Overlay



# Frequencies

---

- **Competition FRQ – 126,700 MHz**
- **Safety FRQ – 128,300 MHz**
- Airport FRQ – 130,550 MHz
- Team FRQ are published on the [www.egc2017.cz](http://www.egc2017.cz)
- Updated frequencies for team of FIN and GER





# Launch procedure

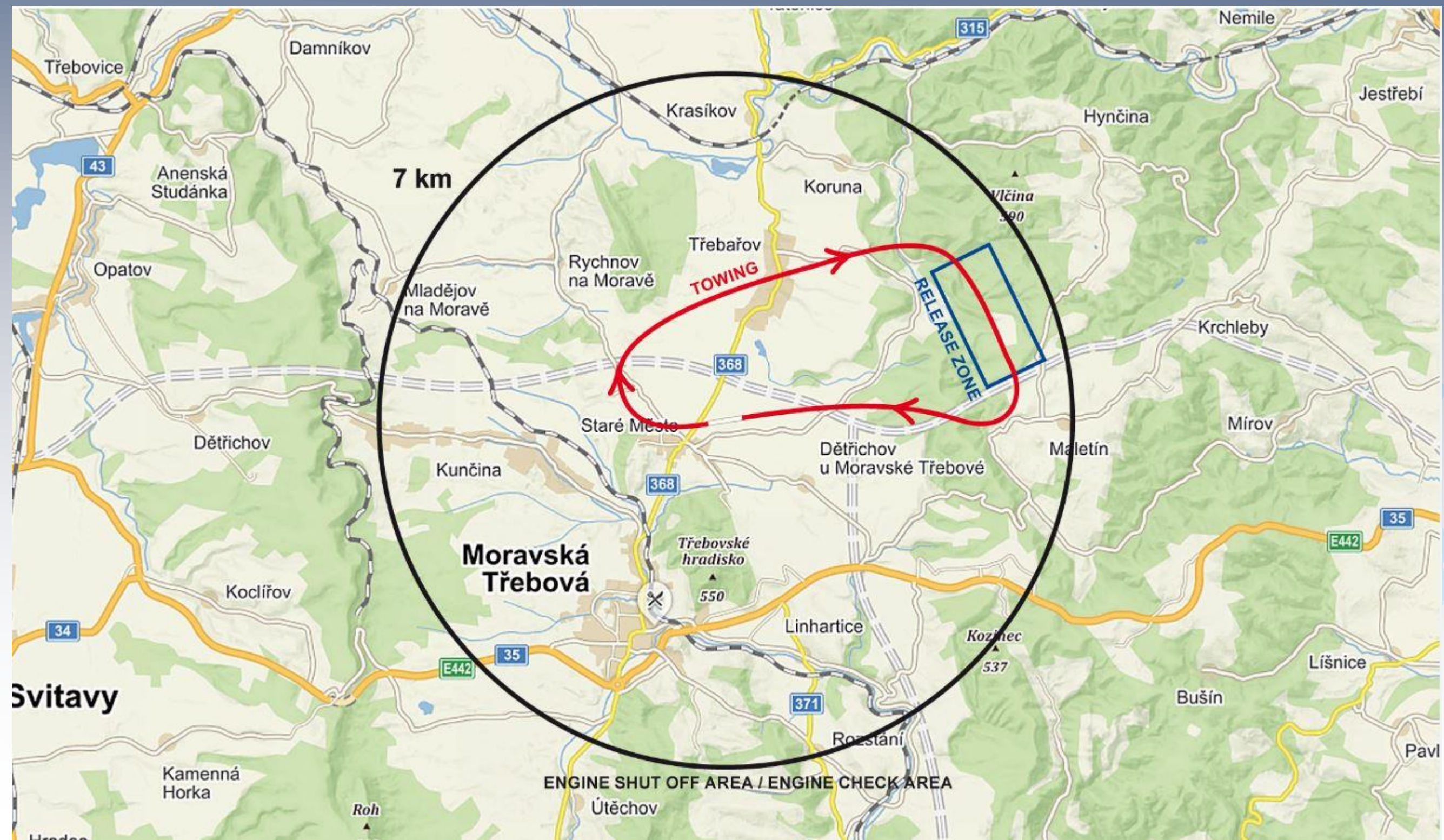
## RWY 26





# Launch procedure

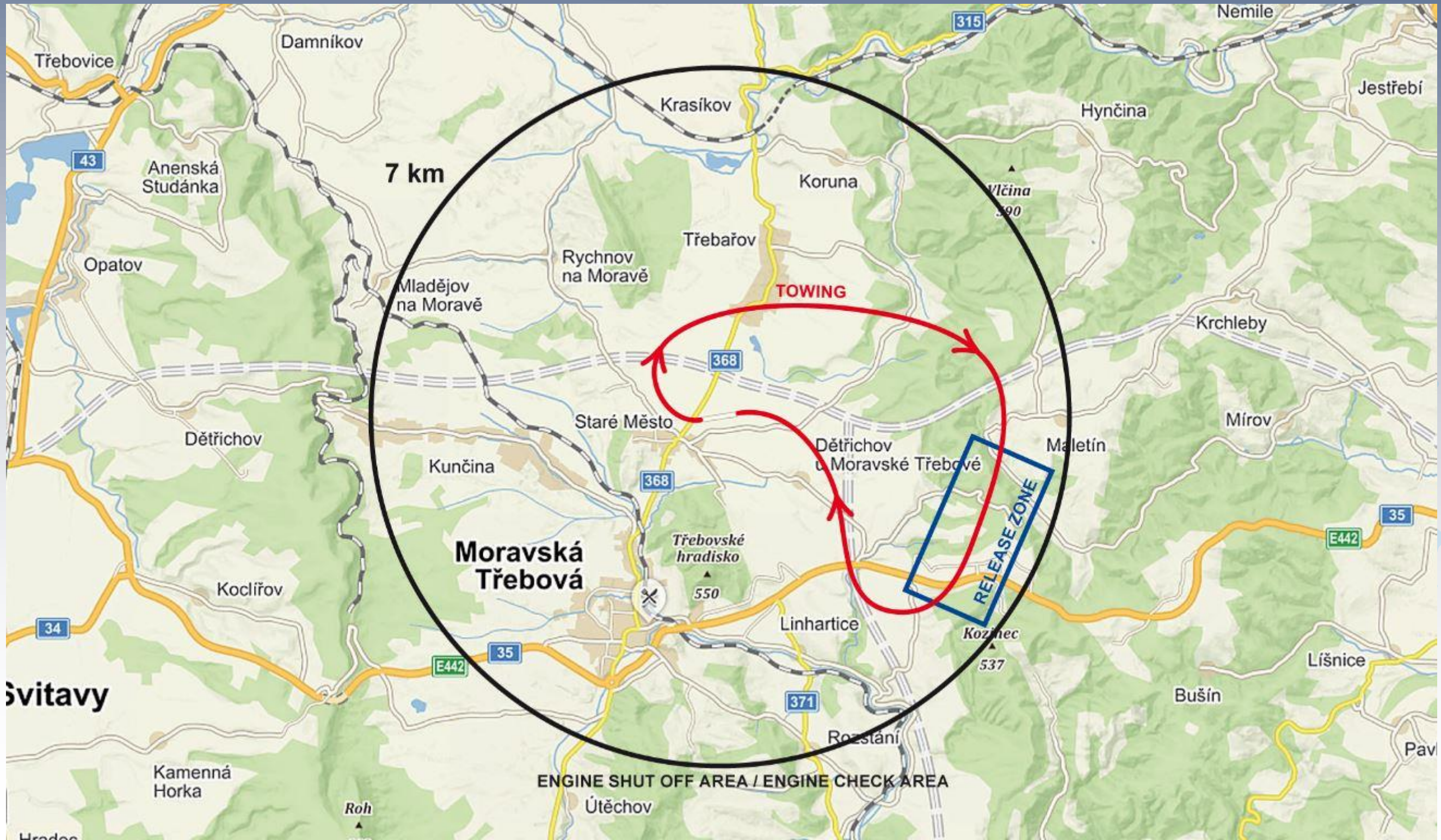
Club Class - RWY 26; Tow planes landing – RWY 26





# Launch procedure


**Standard, 20m – RWY 26; Tow planes landing – RWY 26**





# Release procedures

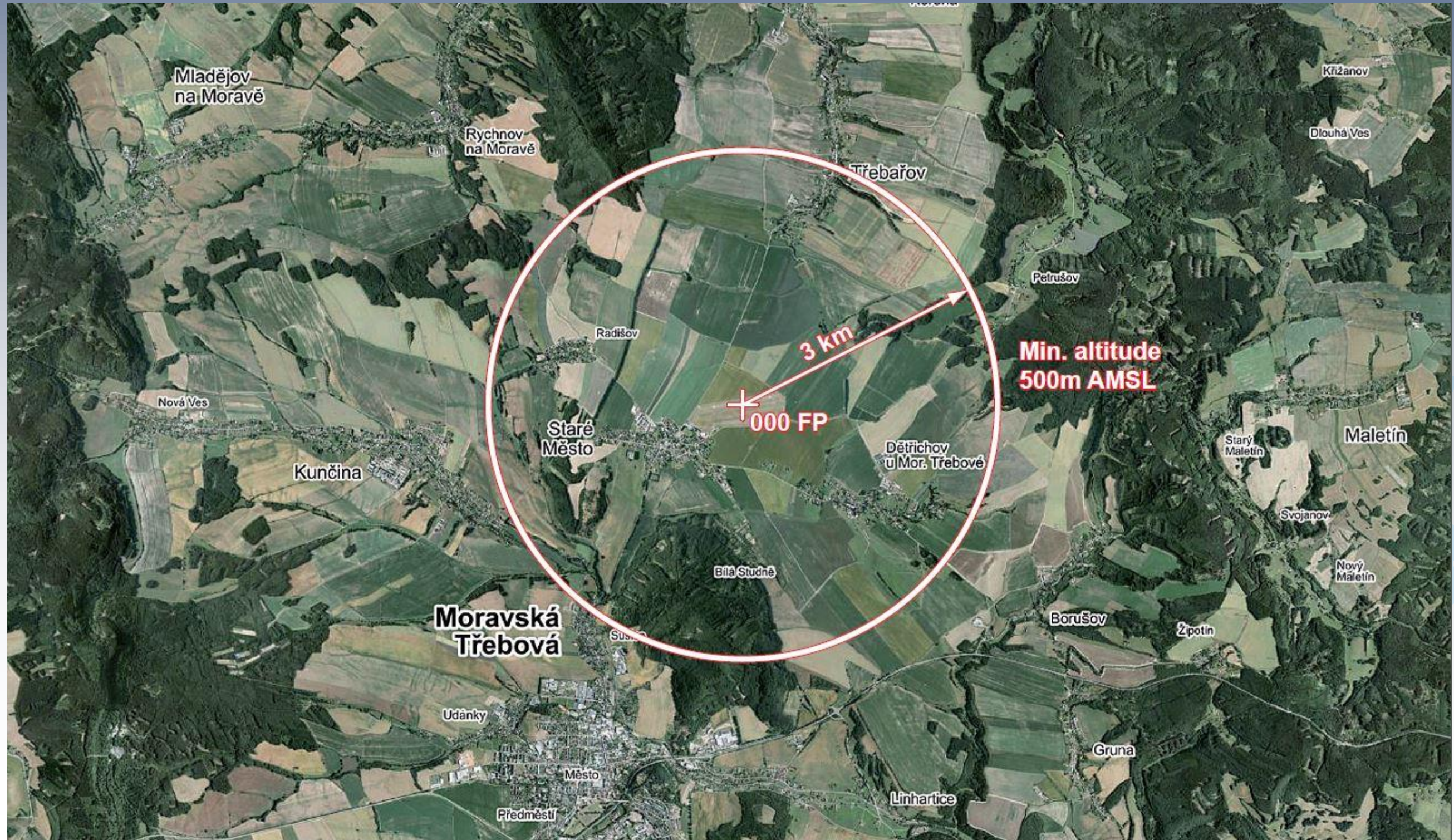
---

- RELEASE height is 600m AGL (approx. 1000m MSL).
  - Tow plane will rock the wings at the height as a sign to release.
  - After release, the tow plane will continue straight ahead to make sure you have released safely and then will descend.
  - Please DO NOT circle in release zone during launches below 1200m MSL.
- 



# Finish ring

3 km circle, alt. 500m AMSL





# Finishing procedures

---

- TREBOVA TOWER: 126,700 MHz
- **Announce finish at 10 km to final**
- **ENGLISH only, speak clearly**
- TREBOVA TOWER → “CN” → 10 km → direct landing/speed finish”
- Minimum altitude at the finish ring : **500m MSL**
- No pull-ups after crossing the finish ring
- Avoid dangerous maneuvers in low altitude

# Landing procedures

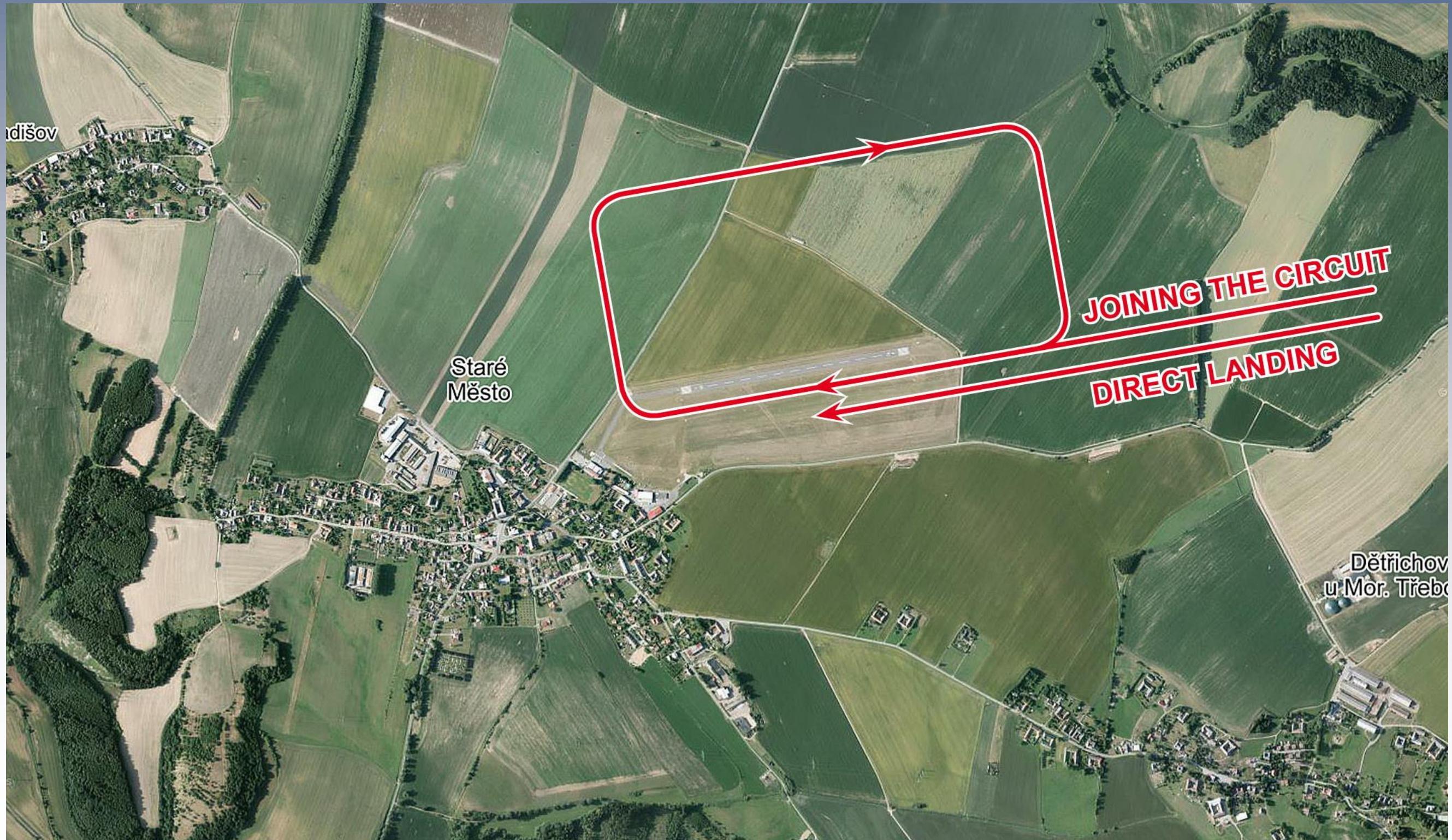
---

- No turns - straight roll out
- Long landings to save space for other landing gliders behind
- Do not cross the runway before and during landings!
- Crew must stay in the designated area and be ready to transport the glider away
- Whole strip is available for landing, asphalt runway can be used after announcement, in a case of need use grass north of asphalt runway



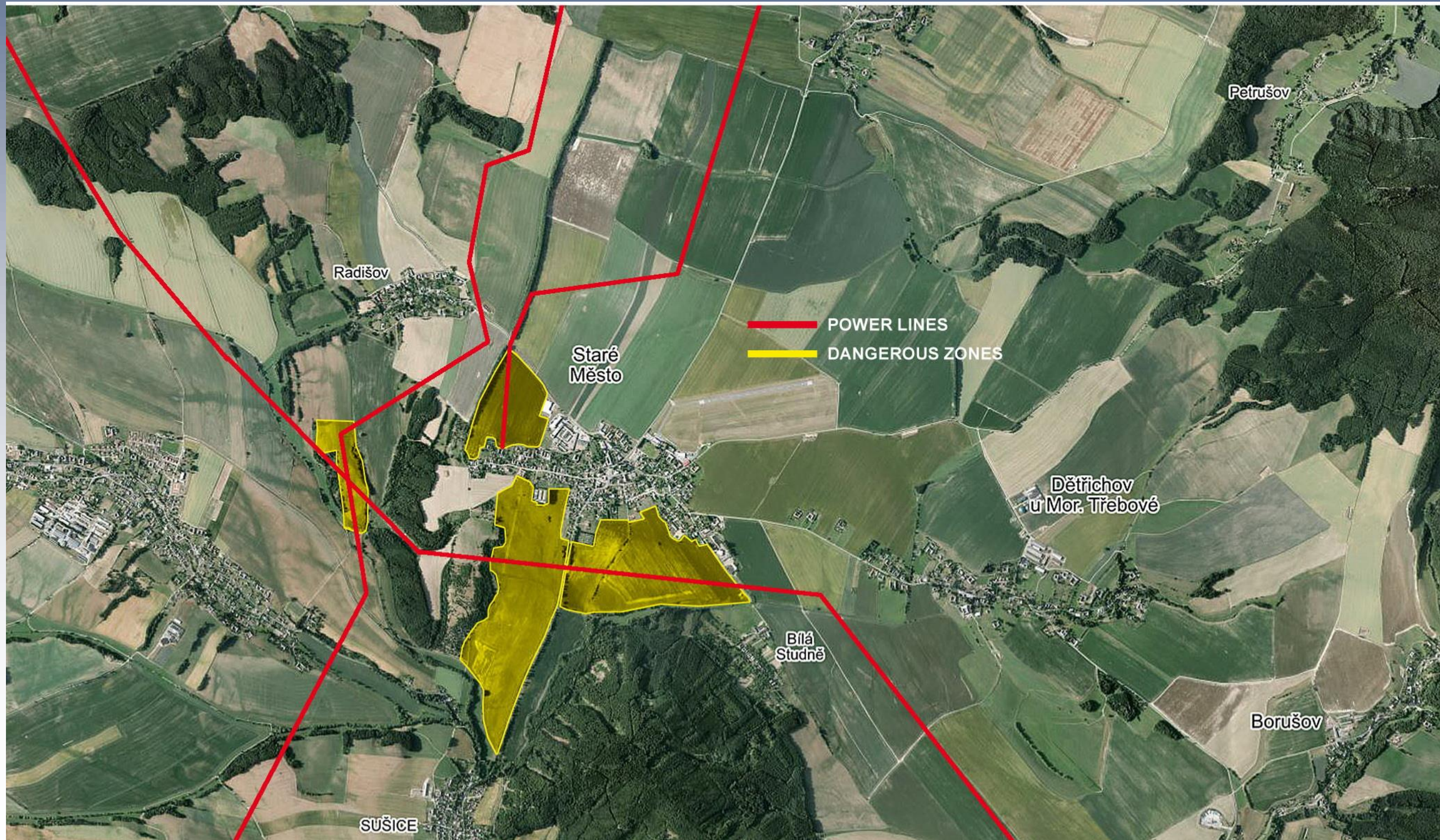
# Landing procedures

## RWY 26





# Dangerous Landing Zones





# Questions

---

?

?

?

?

?

?

?

?

?

?

?



# Sponsors

---

## PARTNERS



## SPONSORS



ALWAYS A  
BETTER WAY

## MEDIA PARTNERS

