

DAY 1



Moravská Třebová | *Czech Republic*
23. 7. - 5. 8. 2017

19th FAI EUROPEAN GLIDING CHAMPIONSHIPS
Club, Standard & 20M Classes



AEROKLUB
ČESKÉ REPUBLIKY



Remarks

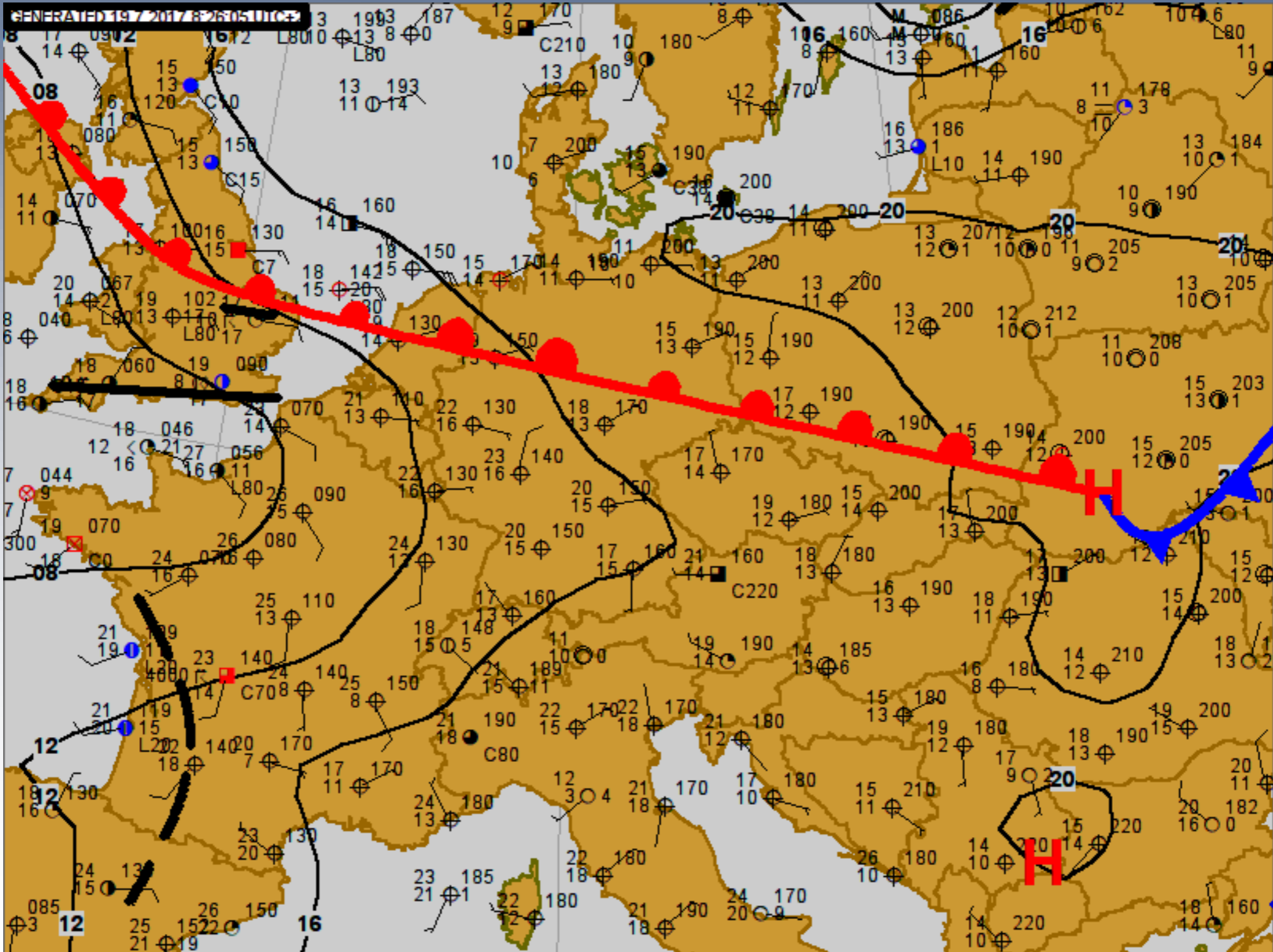
- All cars MUST be parked in designated parking zone 15 minutes before commencement of launch.
- All cars should be signed by CN.
- Please send your IGC file via website (preferably) or by email igc@egc2017.cz.
- Do not cross grass/asphalt over gravel drains.
- No parking under TWR.

Weather



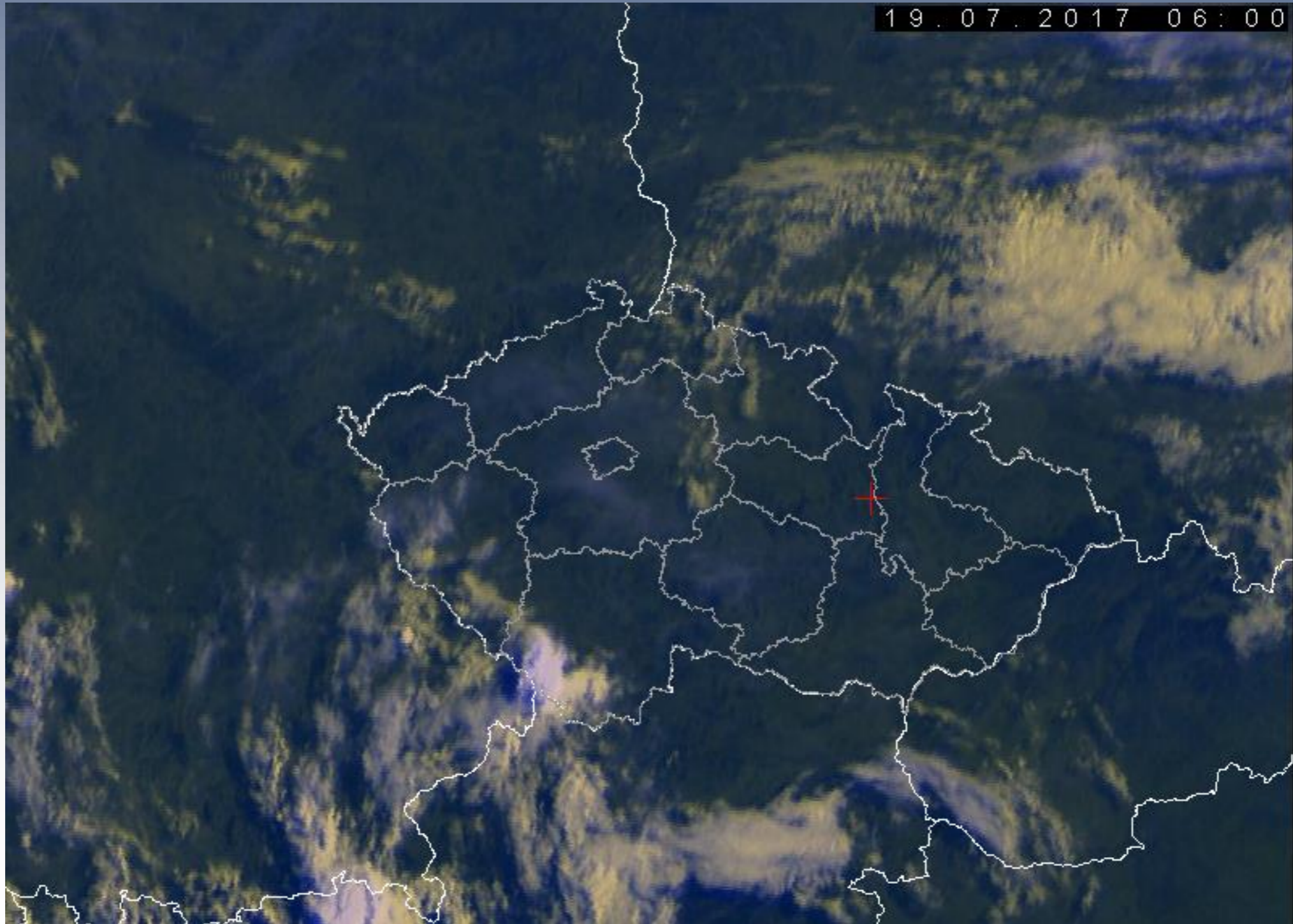
Weather

actual synoptic situation



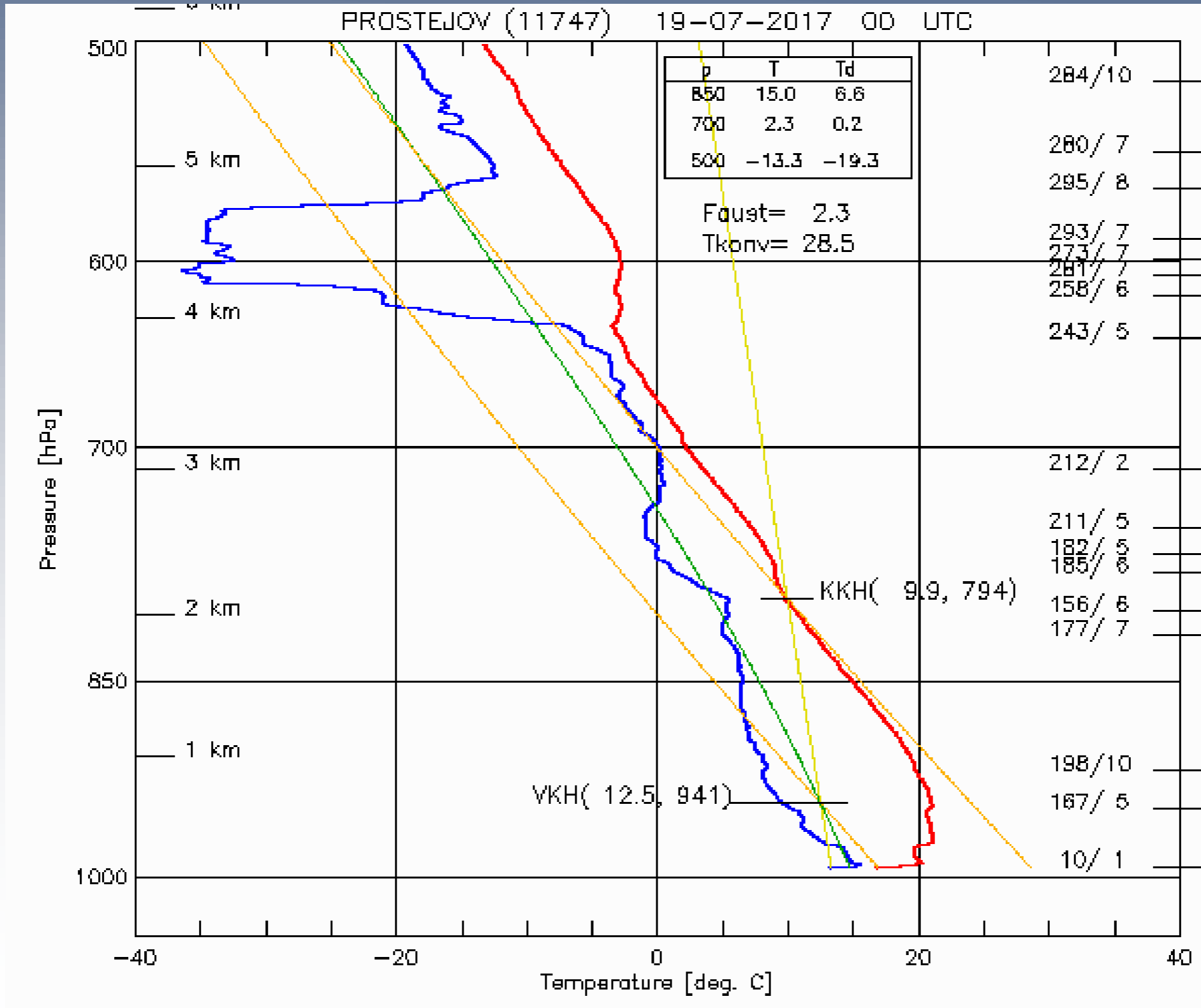
Weather

visible satellite



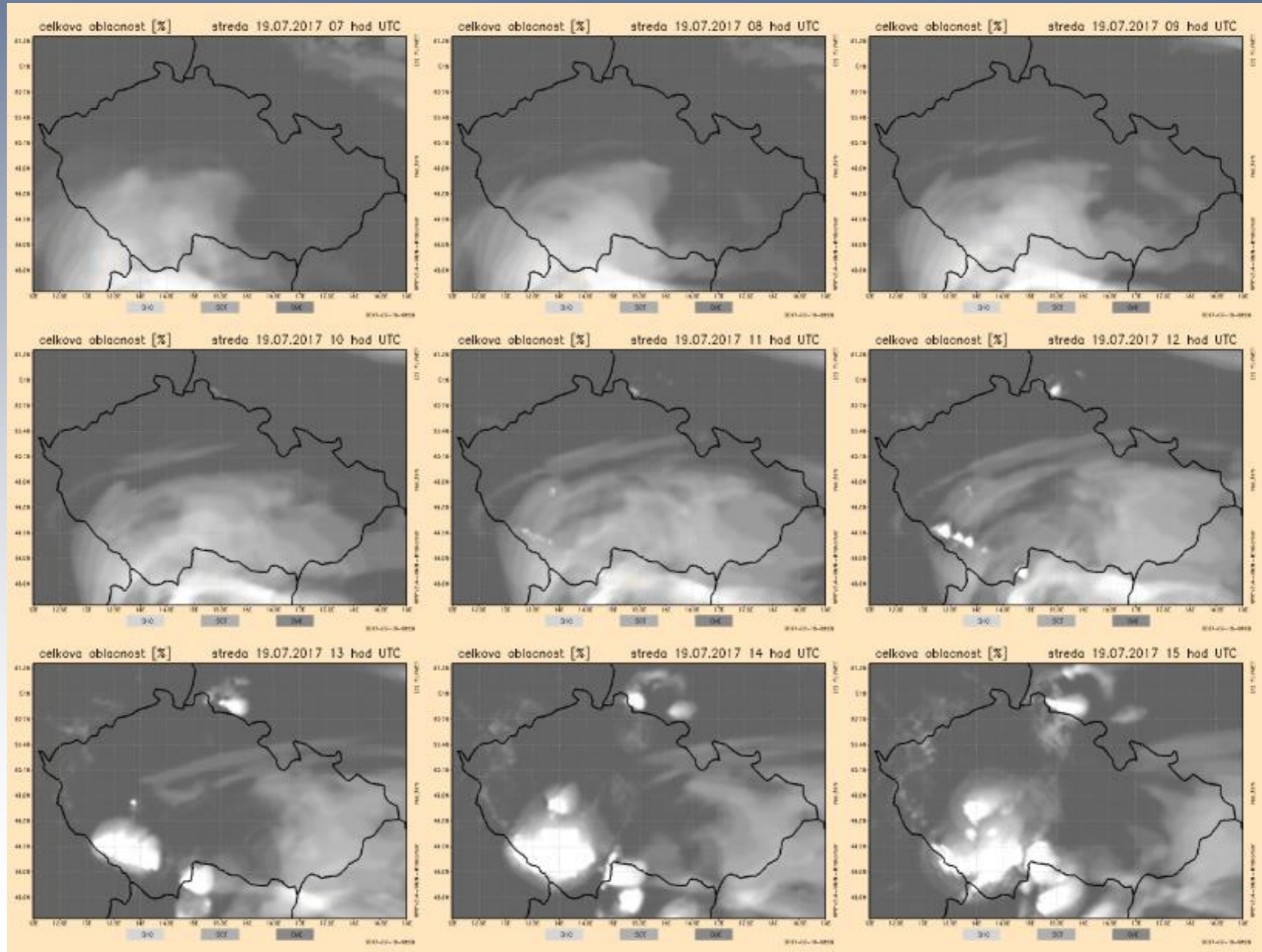
Weather

soundage from Prostejov



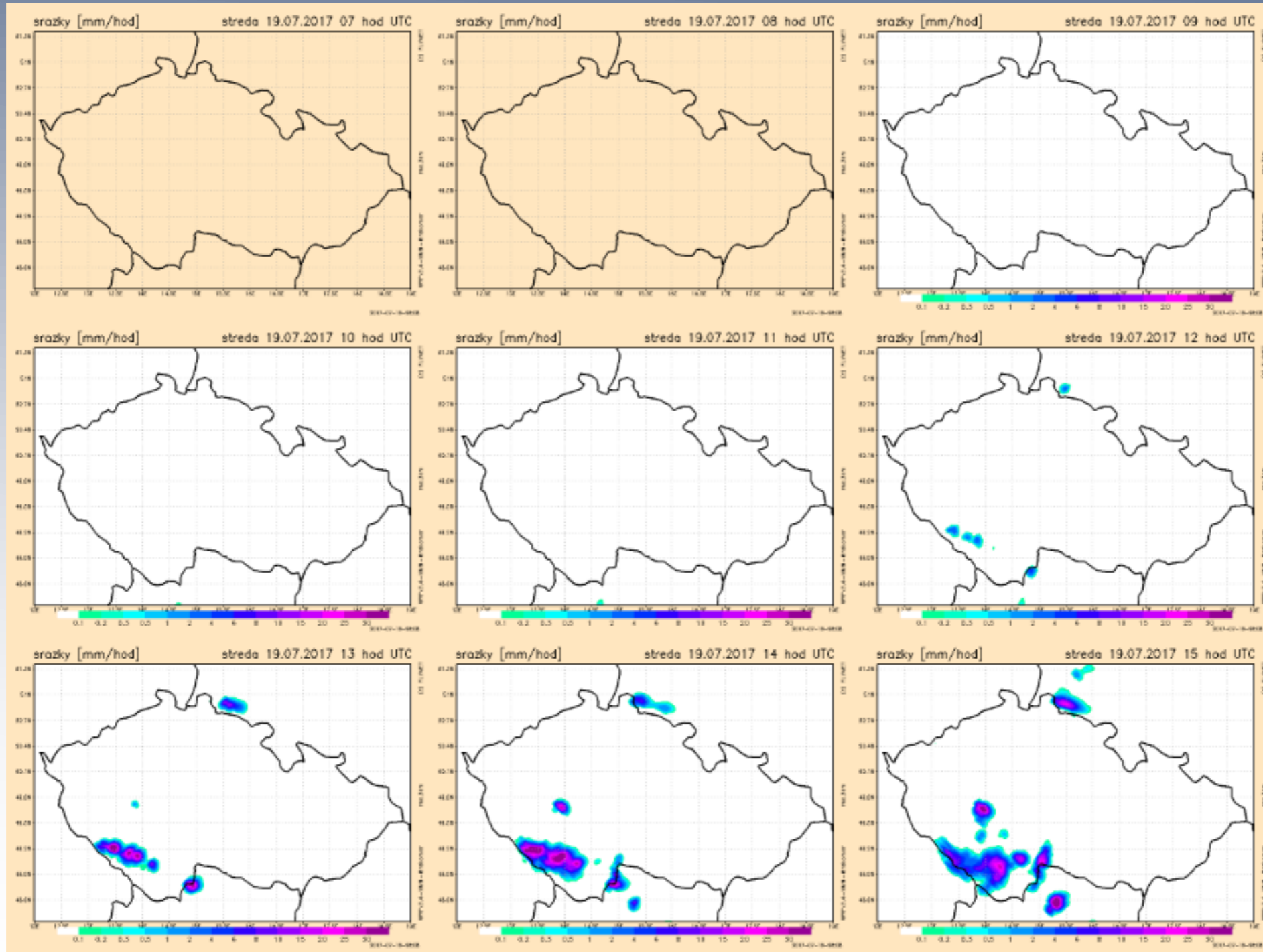
Weather

forecast of total clouds amount



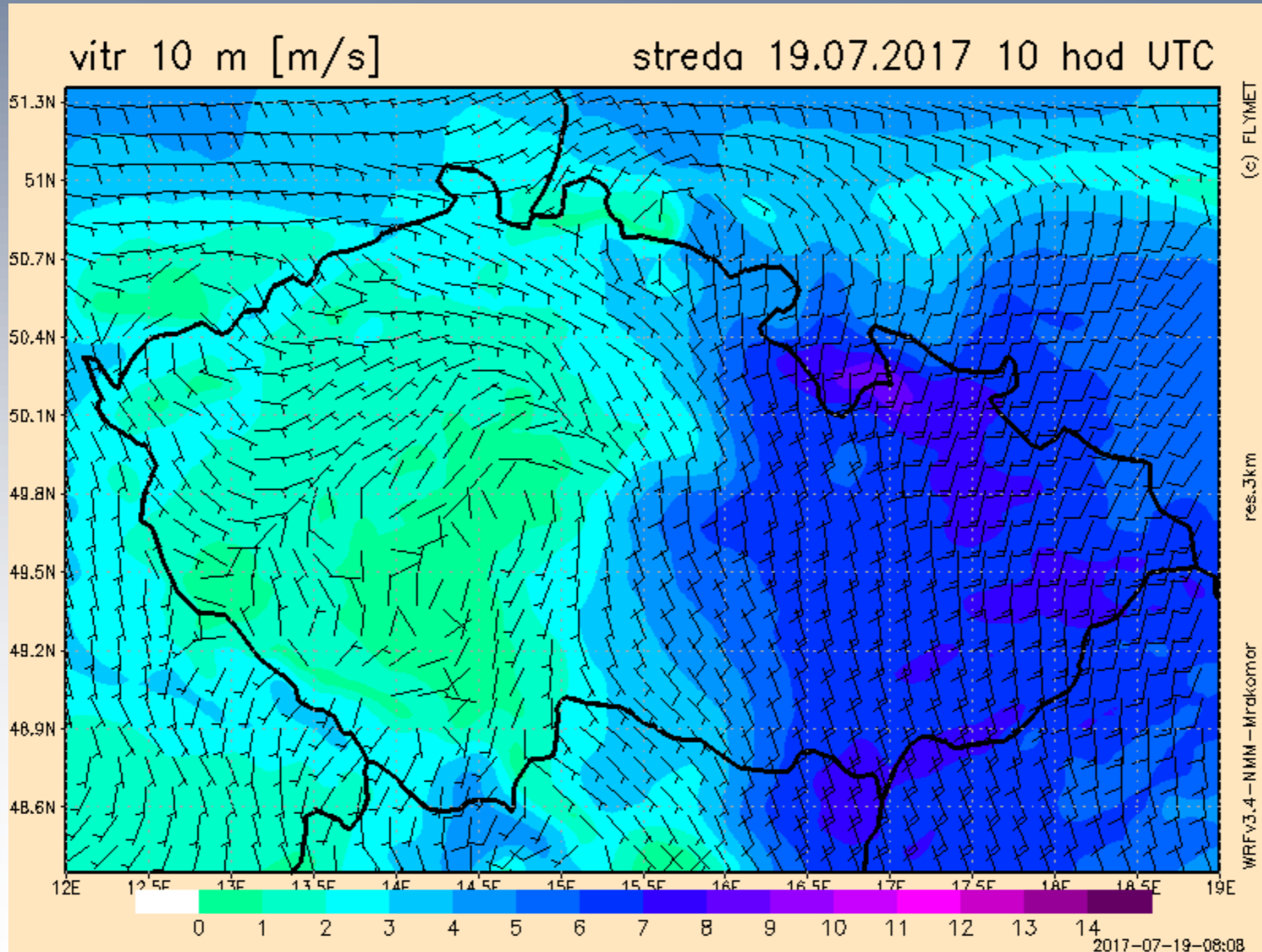
Weather

surface wind cast



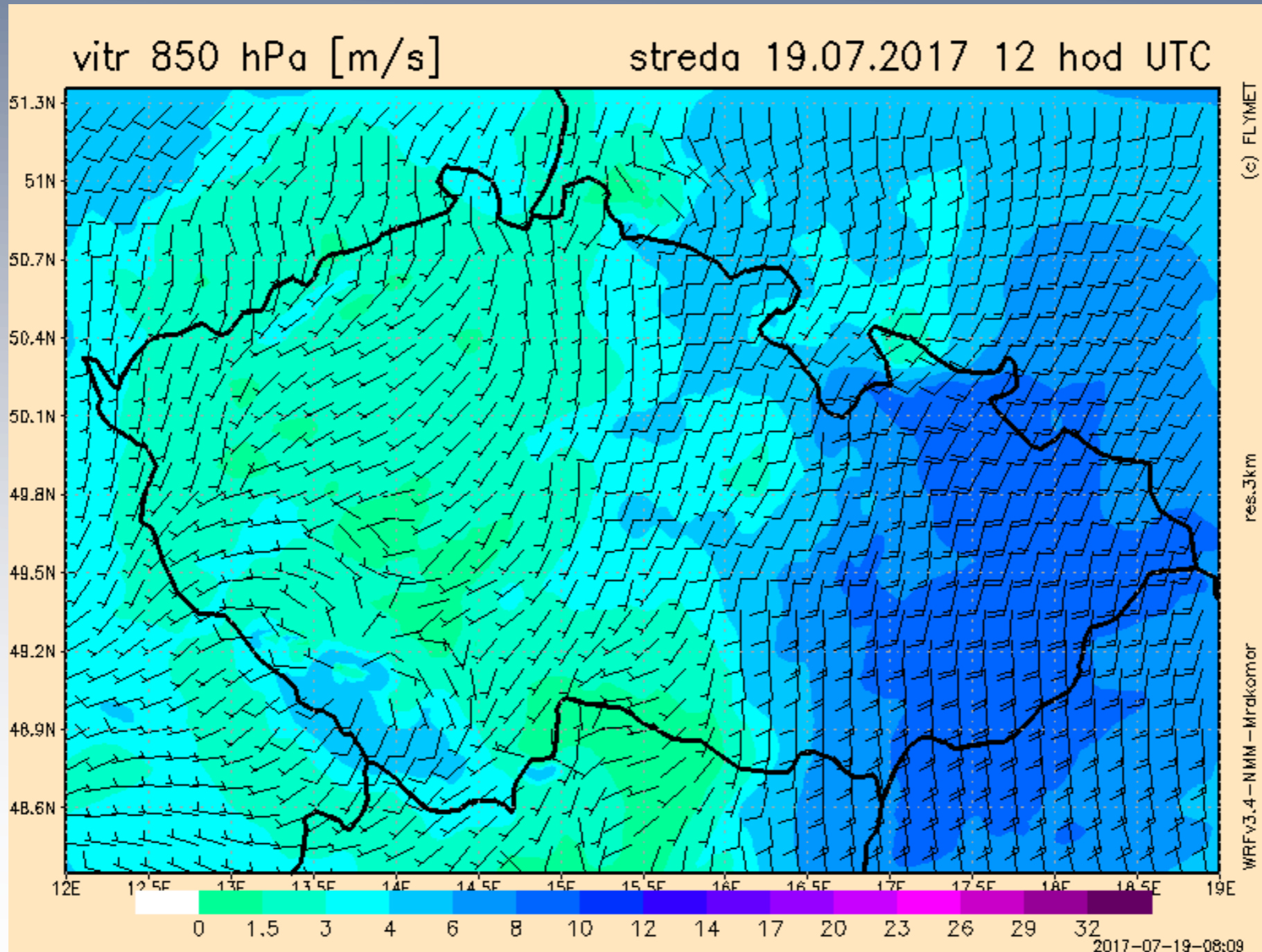
Weather

GND wind forecast



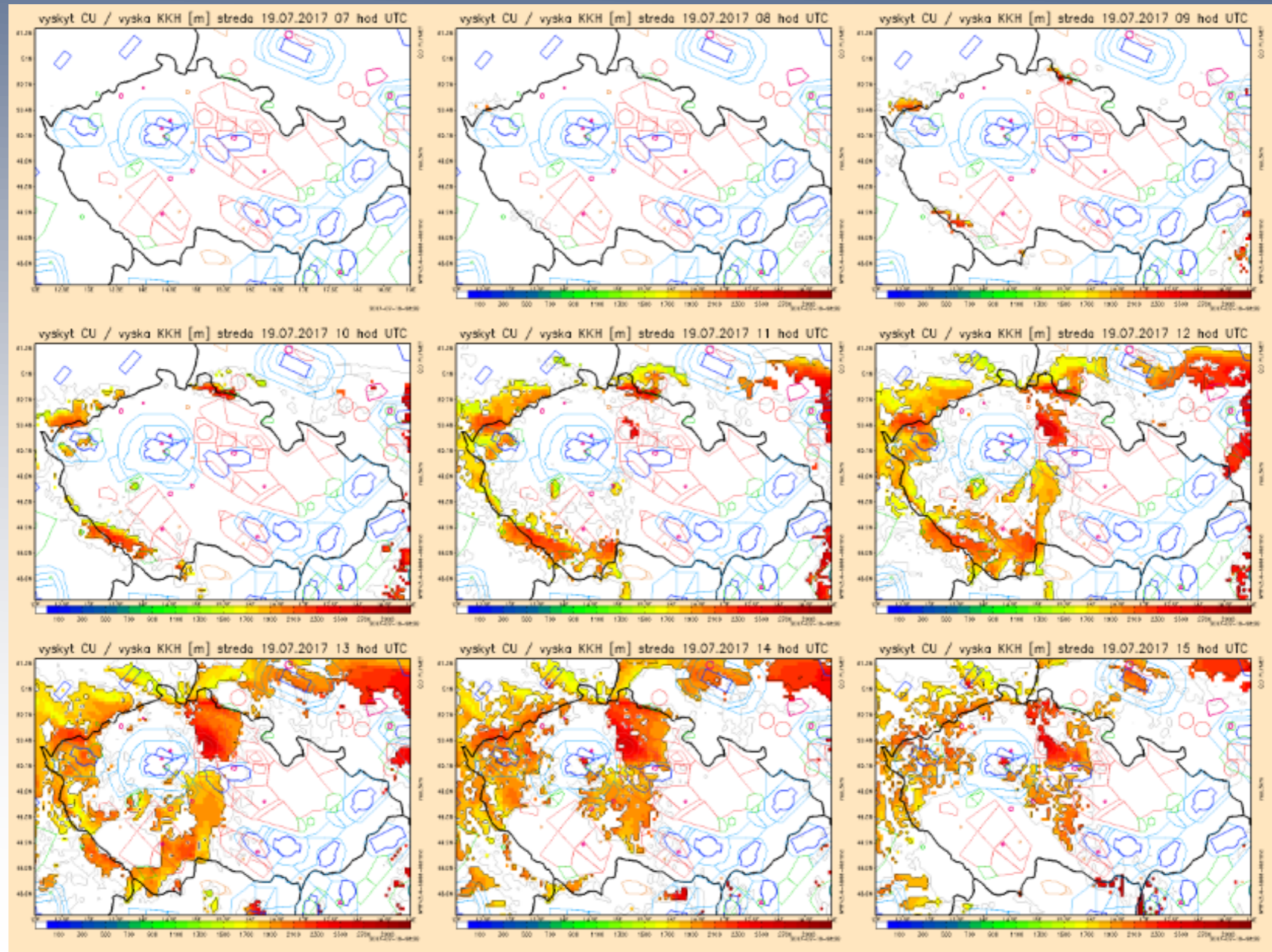
Weather

800hPa wind forecast



Weather

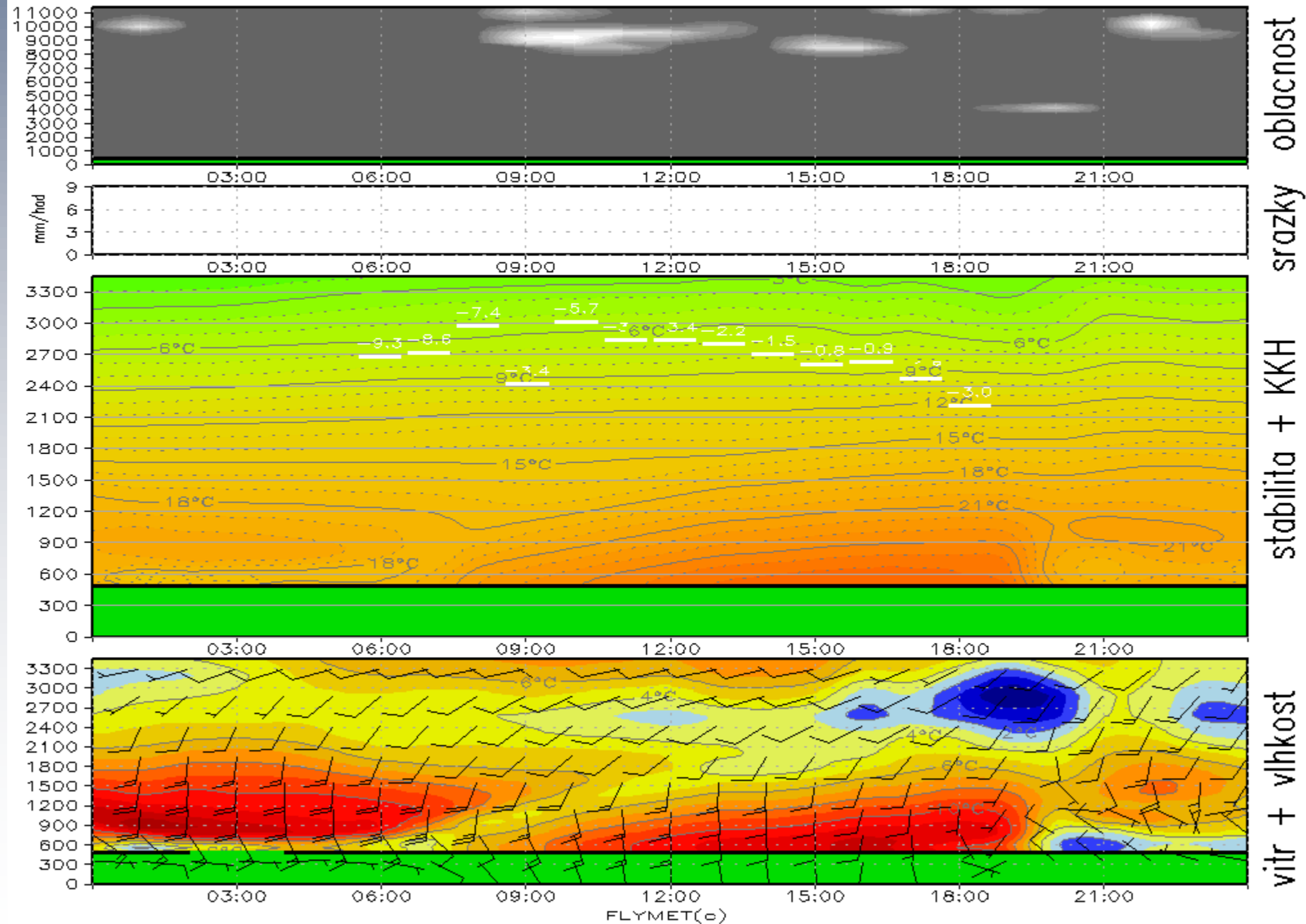
occurrence and height of cumulus clouds forecast



Weather

soaring meteogram of LKMK

meteogram MORAVSKA-TREBOVA na stredu 19.07.2017



Tasks info

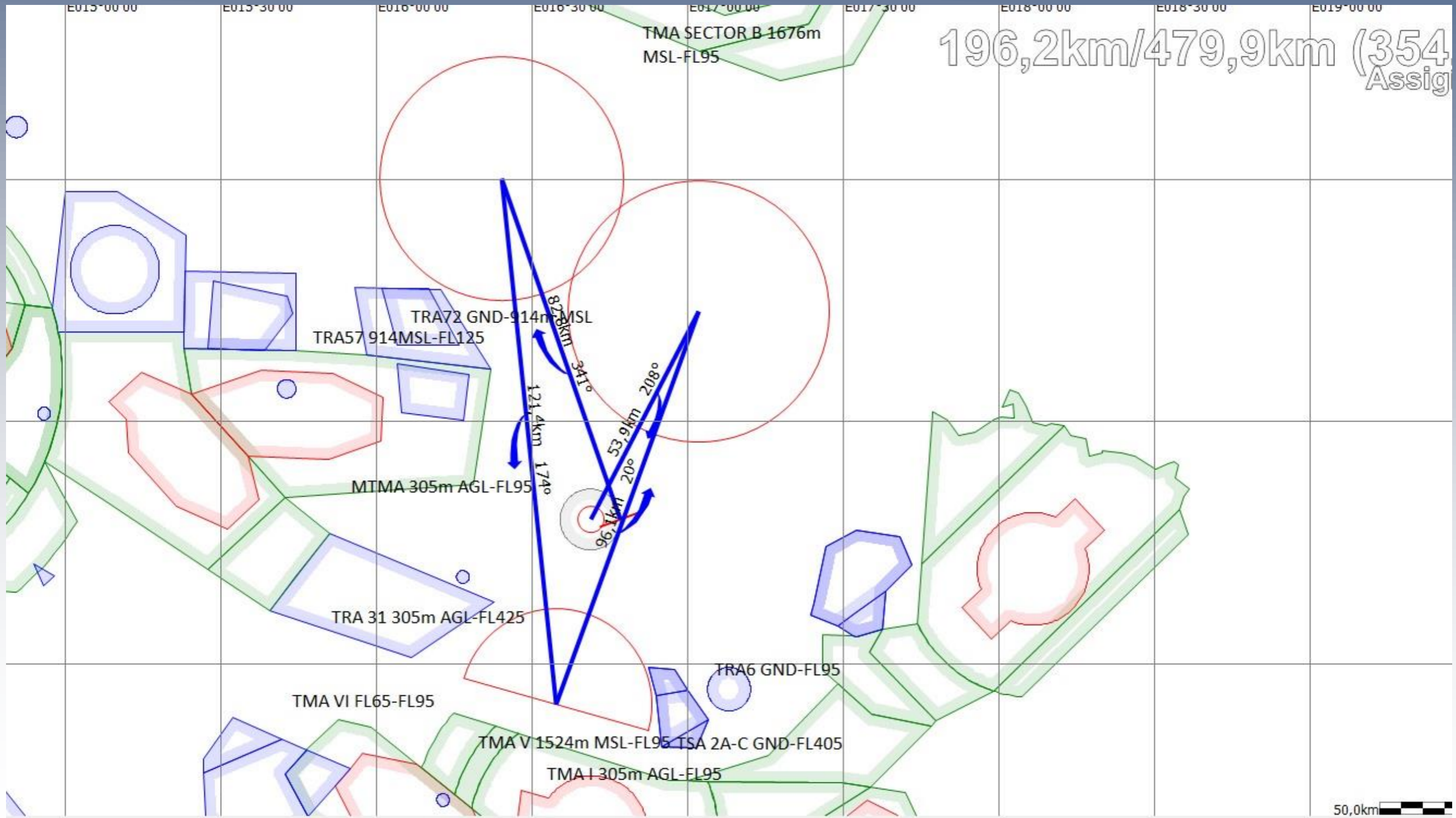
Runway in use:	08
GRID open:	08:30 – 09:45, 10:45 – 11:30 – free gridding
Expected first launch:	11:45 LT
QNH:	1016 hPa
Sunset:	20:52 LT

For details check your task sheet.



Task A – AAT 196,2 / 479,9 km

All classes



Frequencies

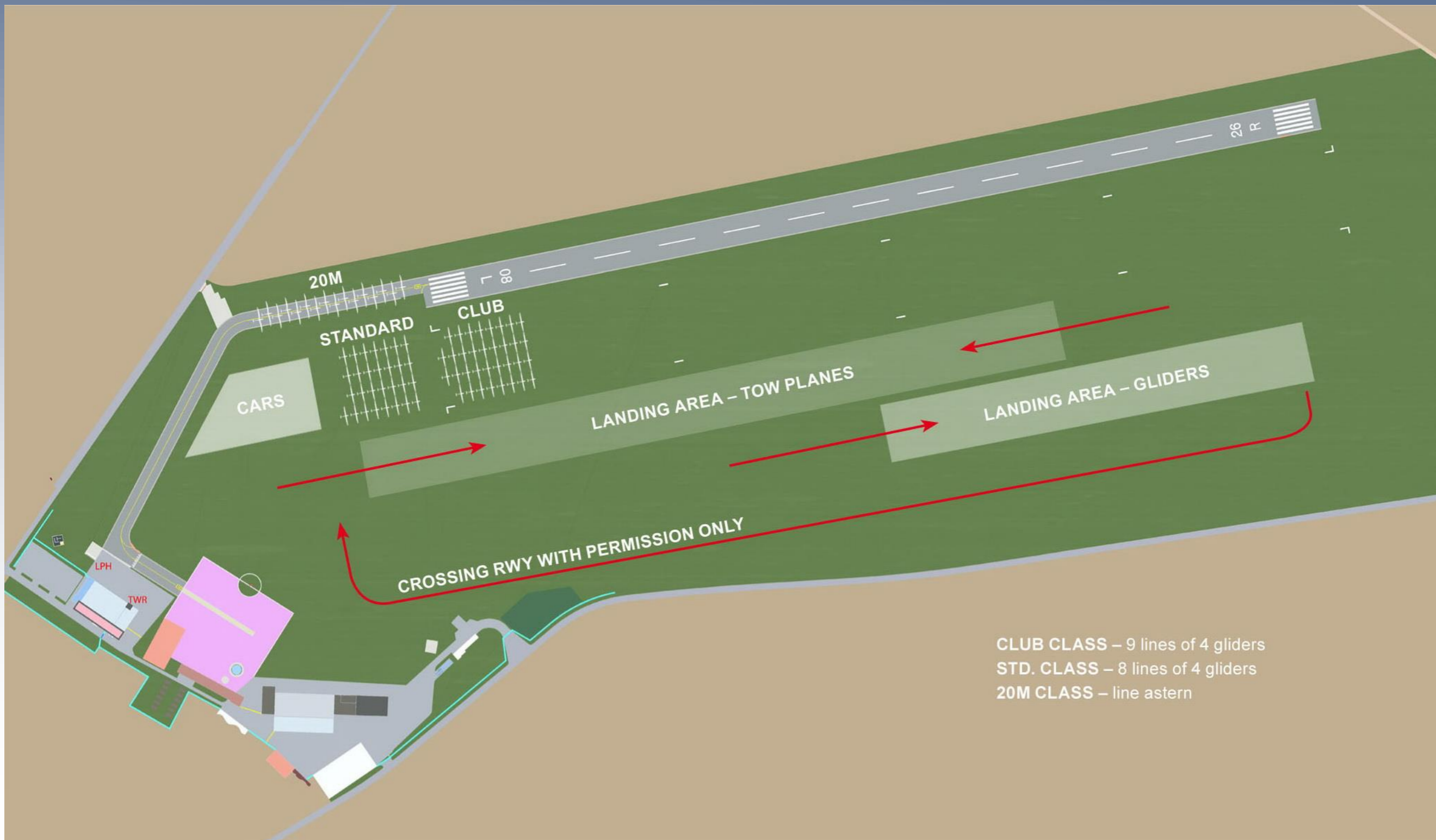
- **Competition FRQ (Main) – 126,700 MHz (25 kHz)**
- **Safety FRQ – 128,300 MHz (25 kHz)**
- **Airport FRQ – 130,550 MHz (25 kHz)**

- Team FRQ with channel separation of 8.33 kHz/25 kHz
- Will be published on the www.egc2017.cz



Launch procedure

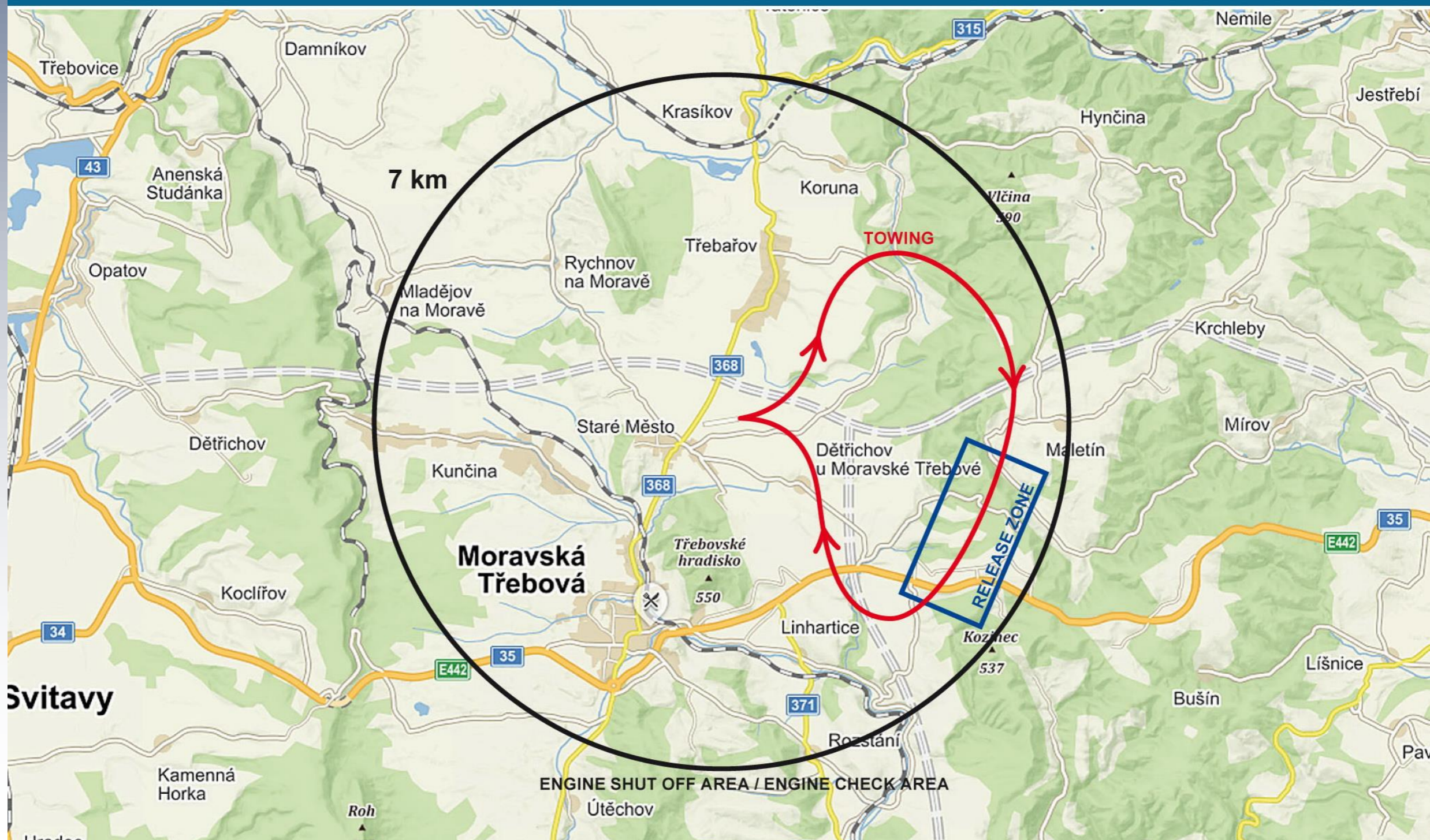
RWY 08



Launch procedure

RWY 08

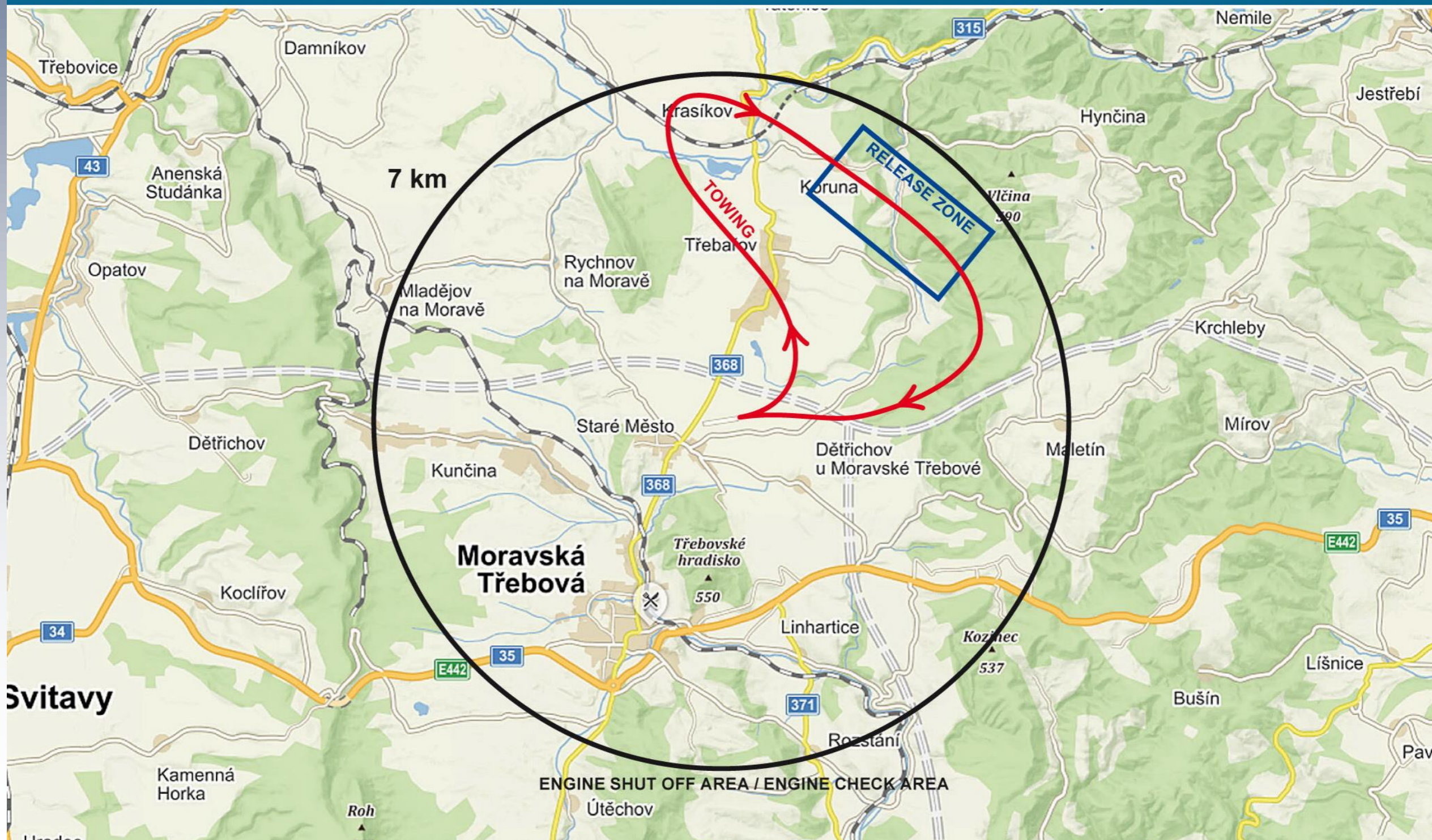
LAUNCHING PROCEDURE – CLUB CLASS – RWY08; TOW PLANES LANDING – RWY26



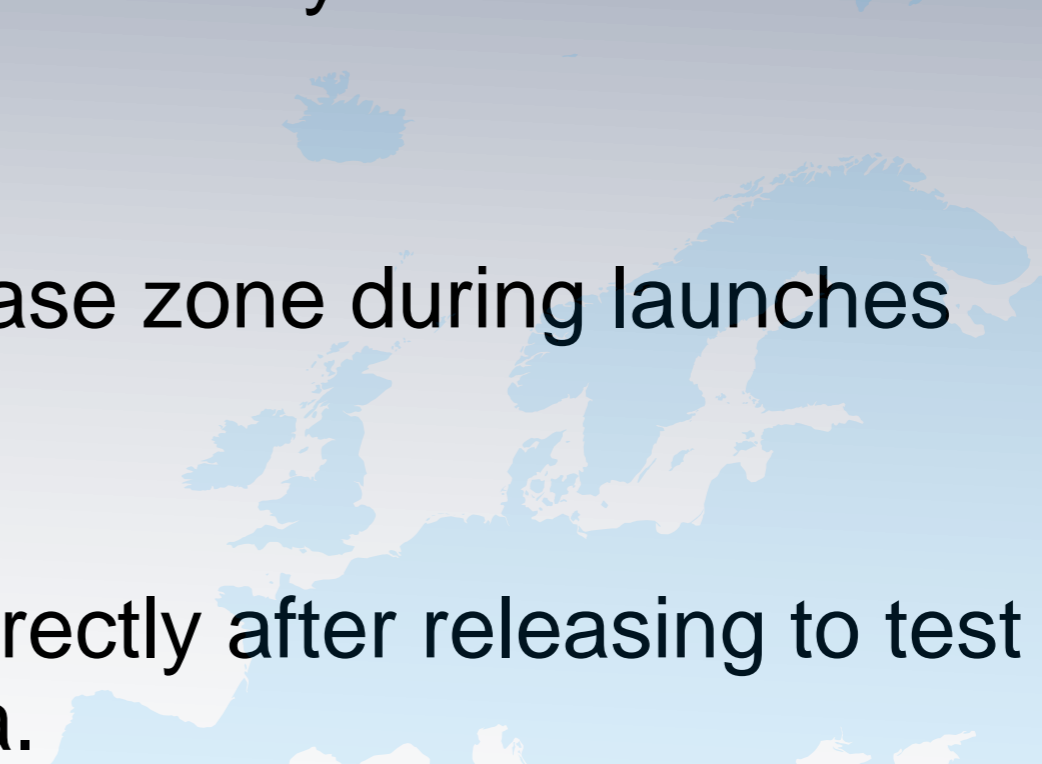
Launch procedure

RWY 08

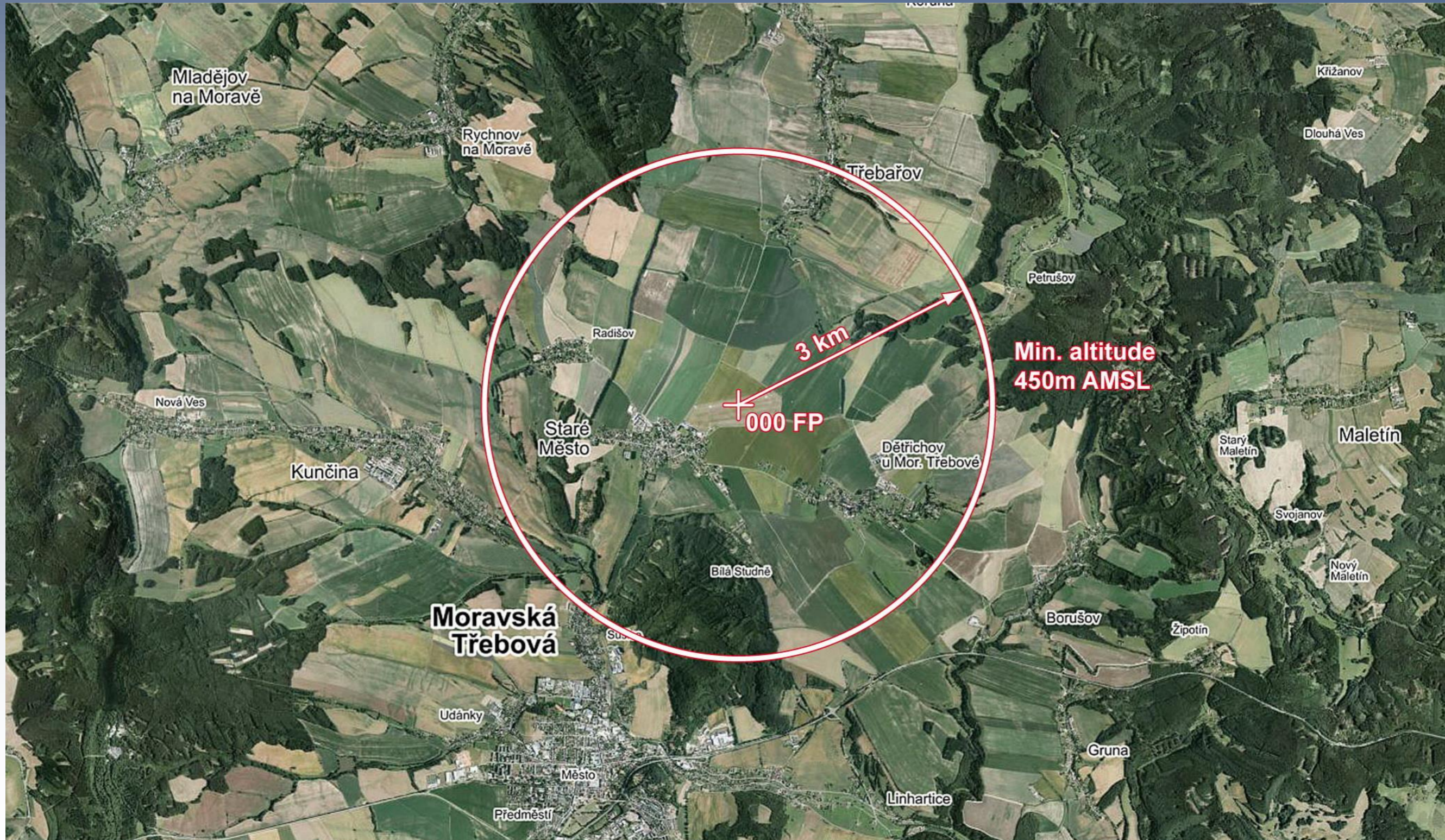
LAUNCHING PROCEDURE – STD, 20M CLASSES – RWY08; TOW PLANES LANDING – RWY26



Release procedures

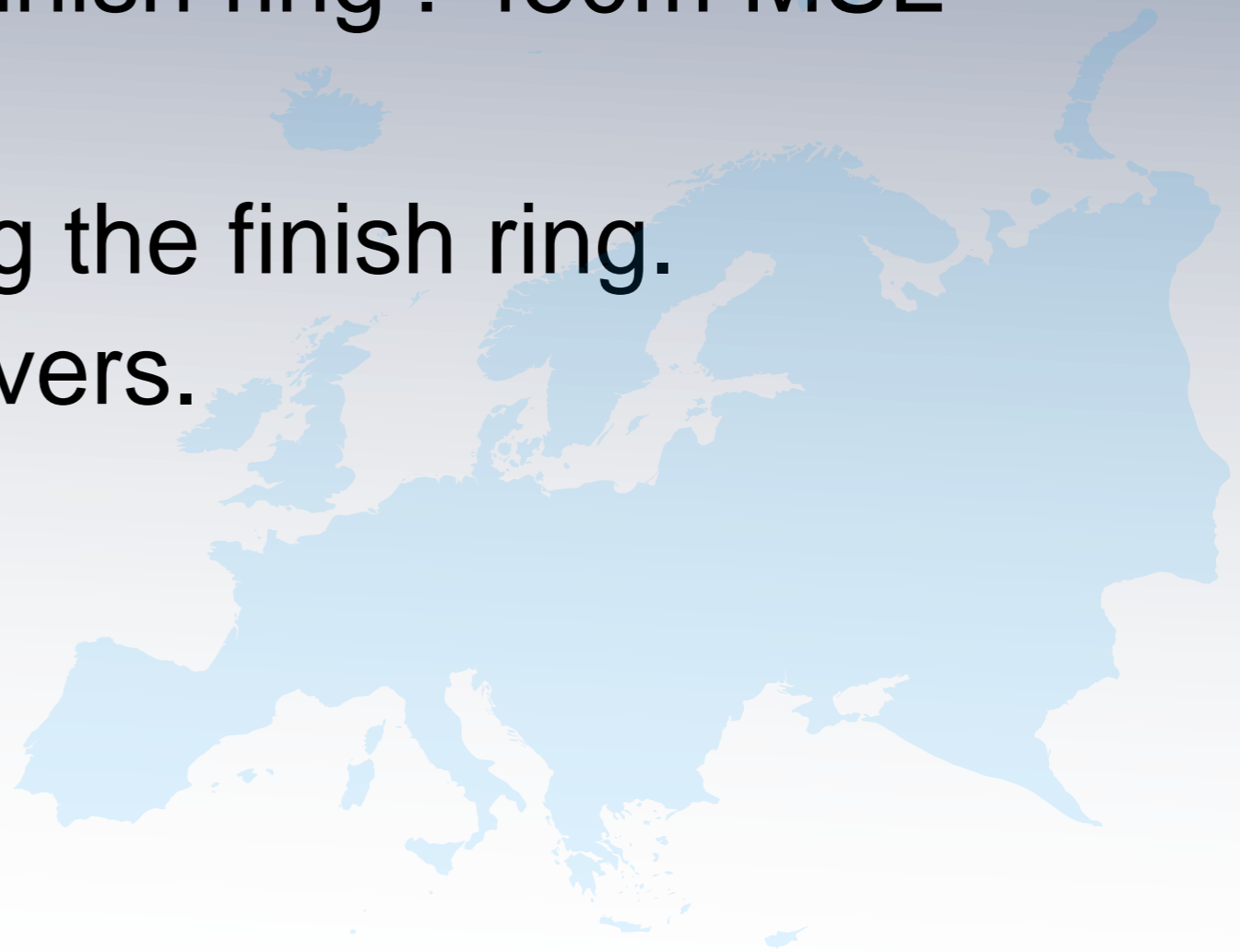
- RELEASE height is 600m AGL (approx. 1000m MSL).
 - Tow plane will rock the wings at the height as a sign to release.
 - After release, the tow plane will continue straight ahead to make sure you have released safely and then will descend.
 - Please DO NOT circle in release zone during launches below 1200m MSL.
 - Motor gliders may continue directly after releasing to test MoP in the engine check area.
- 

Finish ring



Finishing procedures

- TREBOVA: 126,700 MHz
- “SN > distance to finish line (km) > direct landing/speed finish”
- Announce finish at 10 km to final.
- Minimum altitude at the finish ring : 450m MSL
- No pull-ups after crossing the finish ring.
- Avoid dangerous maneuvers.

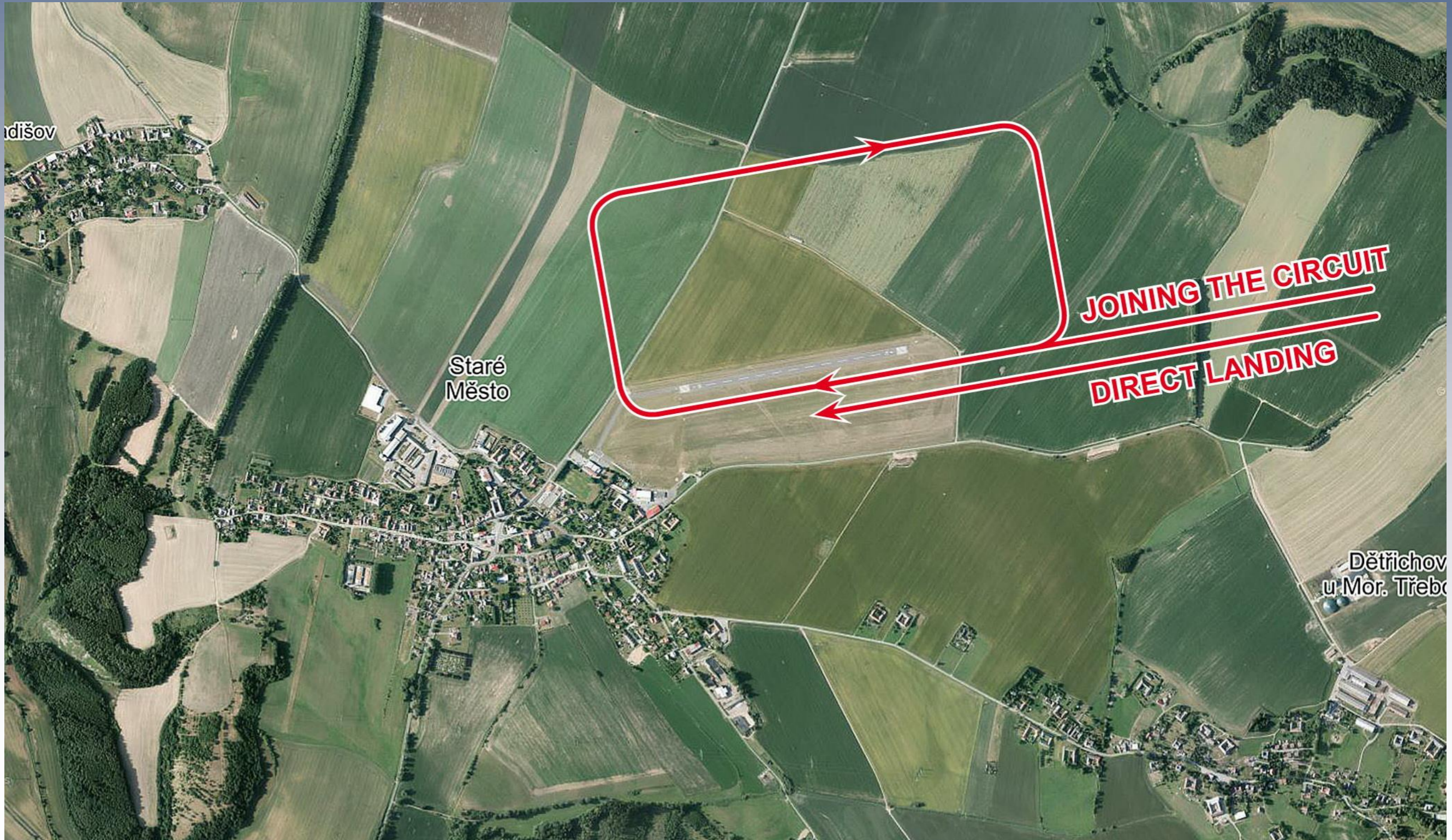


Landing procedures

- No turns - straight roll out
- Long landings to save space for other landing gliders behind.
- Do not cross the runway before and during landings!
- Crew must stay in the designated area and be ready to transport the glider away.
- Whole strip is available for landing, asphalt runway can be used after announcement, in a case of need use grass north of asphalt runway

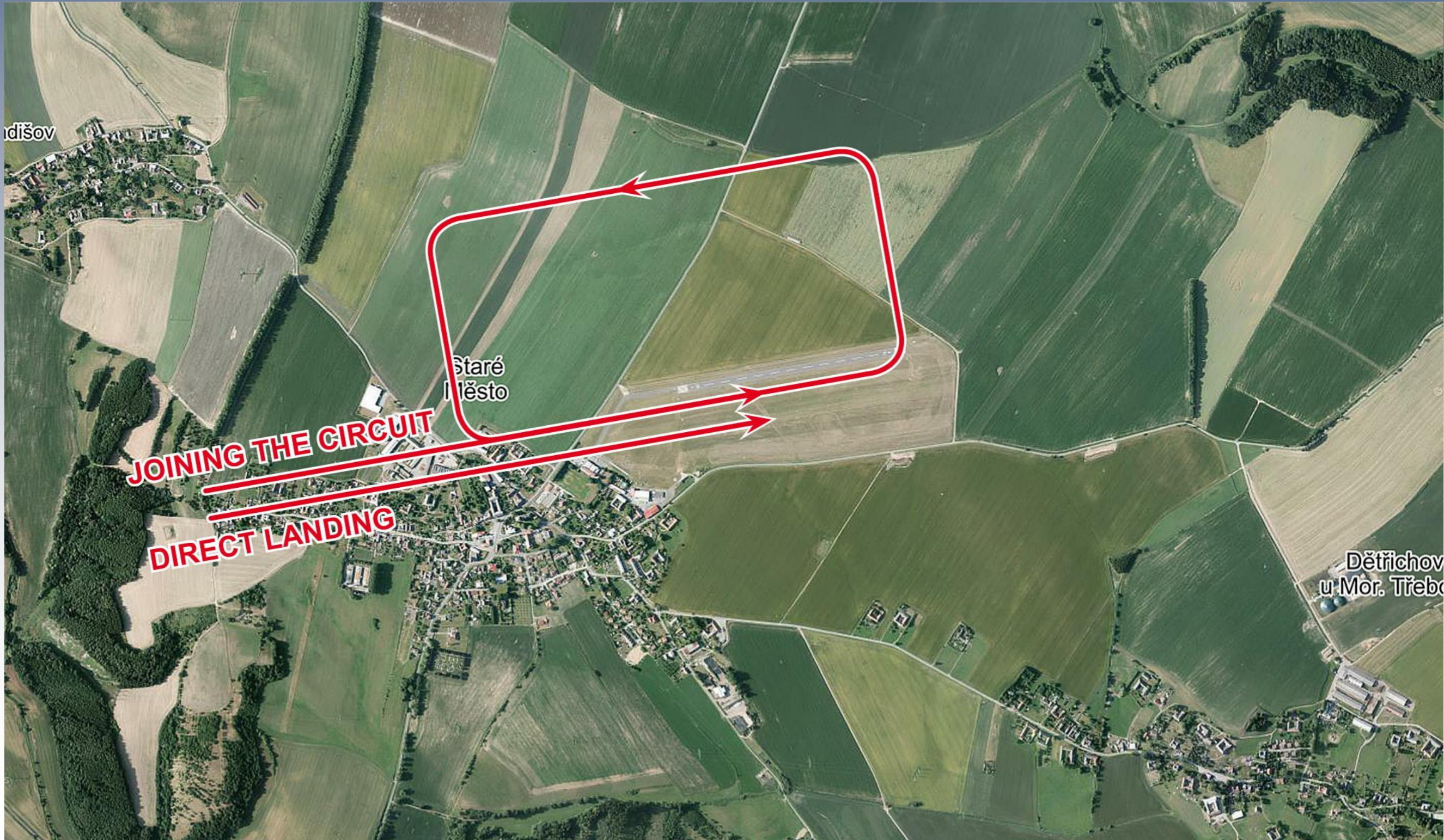
Landing procedures

RWY 26

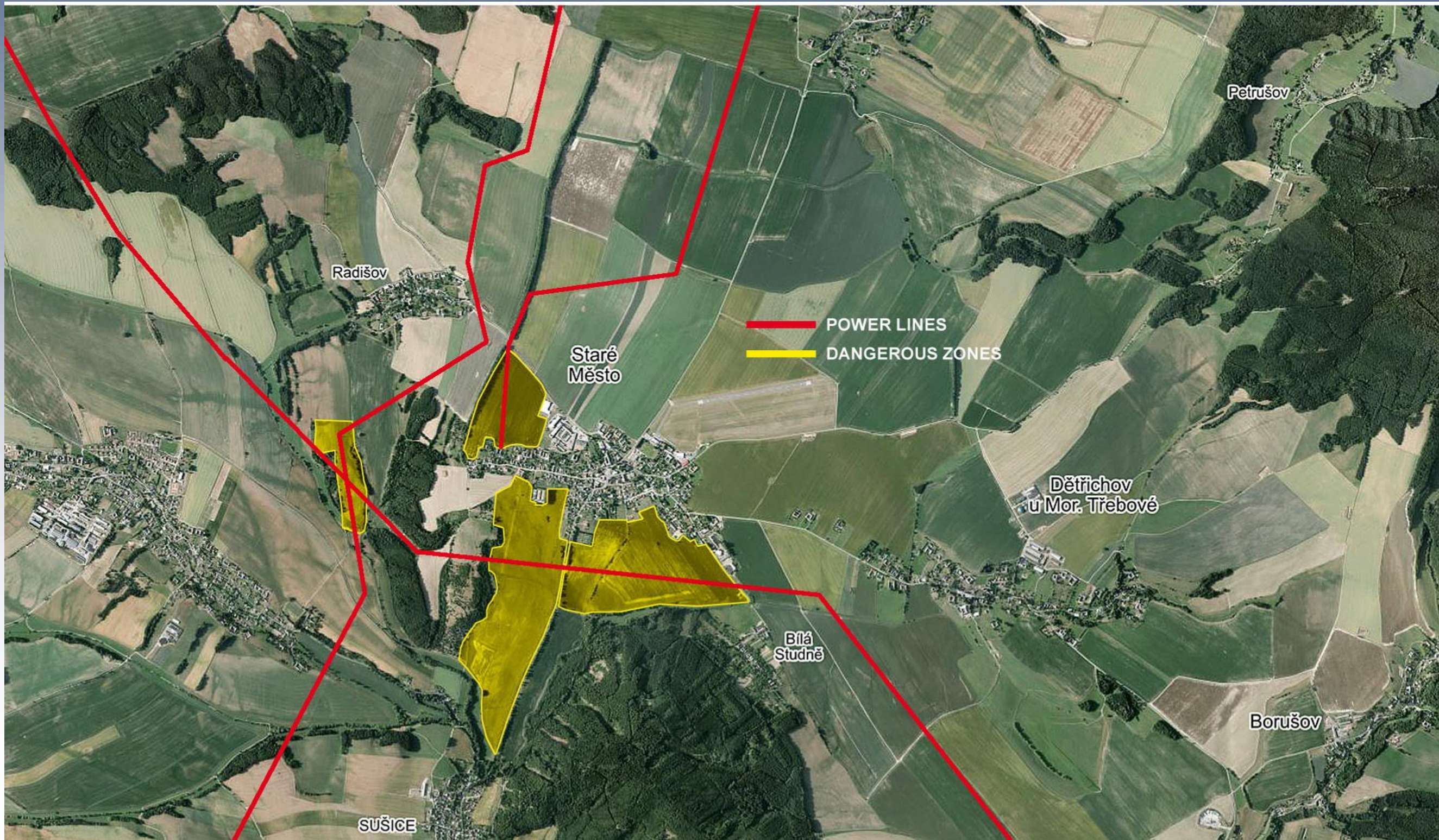


Landing procedures

RWY 08



Dangerous Landing Zones



Questions

?

?

?

?

?

?

?

?

?

?

?



Sponsors

PARTNERS



SPONSORS



ALWAYS A
BETTER WAY

MEDIA PARTNERS

